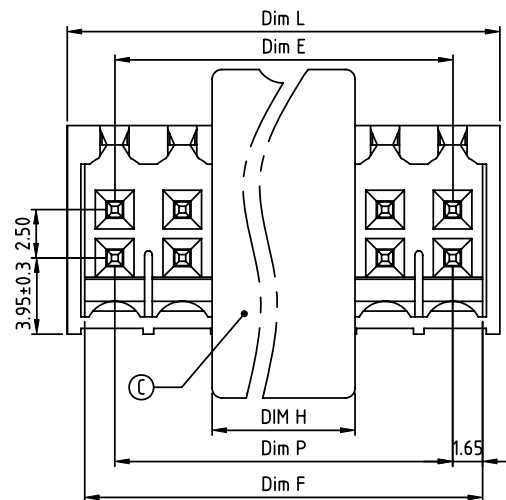
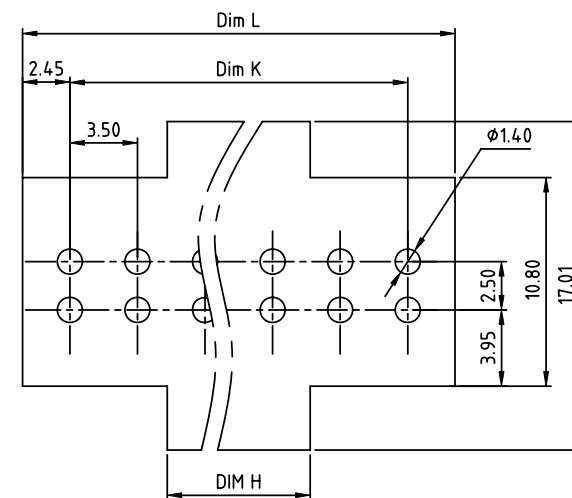



PRODUCT NUMBER	PITCH
VXxx1100B0J0G	3.50 mm

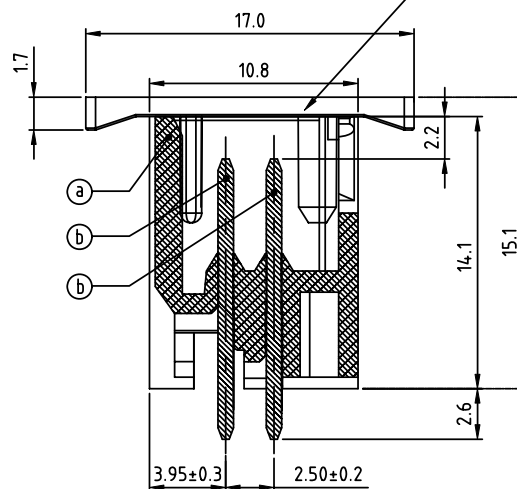
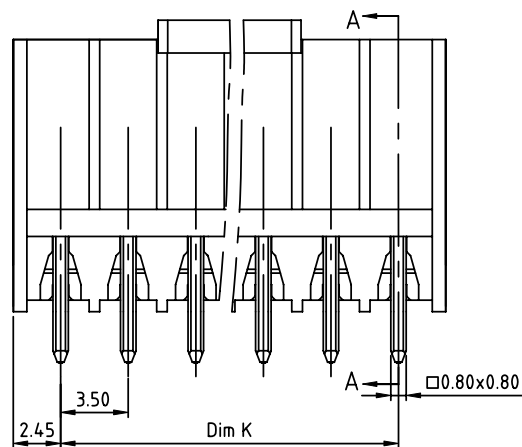


Cover:		
POLES	2P	3P
DIM		
Dim H	7.40	10.90



RECOMMENDED P.C.B LAYOUT
TOP VIEW

- Material:
- Item ① Terminal housing: High temp. polyamide (UL94V-0)
 - Item ② Pin: Brass, Tin plated
 - Item ③ With cover: High temp. polyamide (UL94V-0)
- Electrical: cULus
- Voltage rating: 150V
 - Current rating: 7A
 - Withstanding Voltage: 1.3KV
 - Operating temperature: -40°C to +115°C
 - Reflow Soldering temperature: 260°C/10 Sec max
 - Safety Approval: 



SECTION A-A

Dim L=(N/2-1)×3.5+4.9
Dim P=(N/2-1)×3.5
Dim K=(N/2-1)×3.5
Dim E=(N/2-1)×3.5
Dim F=(N/2-1)×3.5+3.3

N=Number of poles

Poles	Dim L	Dim P&Dim K	Dim E	Dim F
2x2p-2x6p	±0.15	±0.10	±0.10	±0.15
2x7p-2x12p	±0.25	±0.20	±0.20	±0.25
2x13p-2x16p	±0.35	±0.30	±0.30	±0.35

PART NO.: VX xx 11 0 0 B0J0 G

- Solid block
 No. of poles
 04 2x2 poles
 06 2x3 poles
 ...
 32 2x16 poles
- Color
 0 Black (RAL9005)
- RoHS compliant
 (lead<4%)
 In copper Alloy

mat'l. code				surface	tolerance	projection	product family	
ltr	ecn	no	dr	date	ASME Y14.5 ✓	ASME Y14.5	TERMINAL BLOCK	
					tolerances unless otherwise specified		title	
					angles	X.±0.5	TERMINAL BLOCK	
					flatness	X.X±0.3	PLUGGABLE SOCKET, VERTICAL, CLOSE TYPE, THR	
					X'±1°	X.XX±0.1	scale	
					dr	EVIN ZHONG 050714	sheet 1 of 1 size	
					enrg	EVIN ZHONG 050714	VXxx1100B0J0G	
					chr	HANKE FENG 050714	A4	
					appd	SHI JUN 050714	type	
							CUSTOMER Drawing	
sheet index	revision	A						