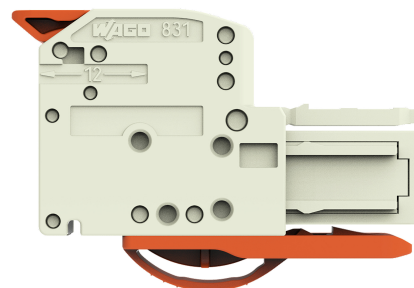
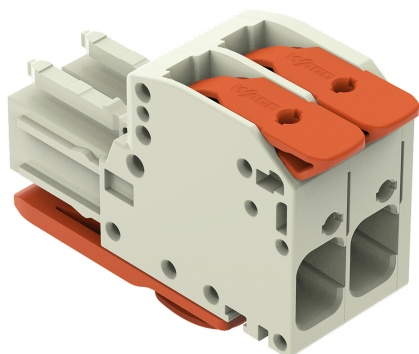


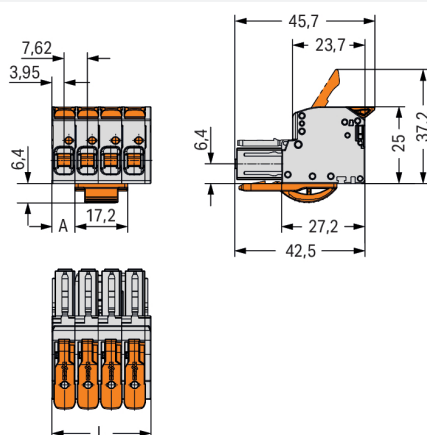
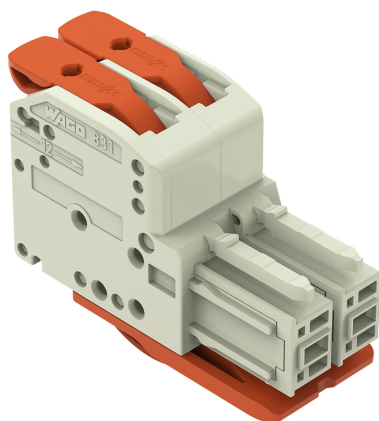
## Data Sheet | Item Number: 831-1102/322-000

1-conductor female connector; lever; Push-in CAGE CLAMP®; 10 mm²; Pin spacing 7.62 mm; 2-pole; 100% protected against mismating; Centered locking levers; 10,00 mm²; light gray

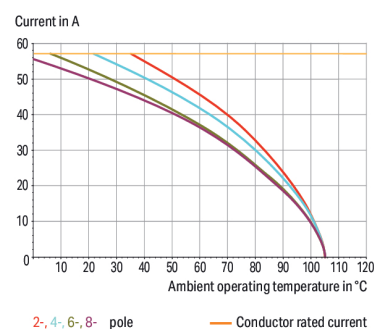
<https://www.wago.com/831-1102/322-000>



Color: ■ light gray



Derating Curve  
1-conductor female connector (831-11xx) with  
1-conductor male connector (831-12xx)  
Pin spacing: 7.62 mm / Conductor cross-section: 10 mm² "f-st"  
Based on: EN 60512-5-2 / Reduction factor: 0.8



Dimensions in mm

L = pole no. x pin spacing + 1.9 mm

Pole no. 2: A = 0.1 mm

Pole no. 3: A = 7.5 mm

Pole no. 4: A = 7.5 mm

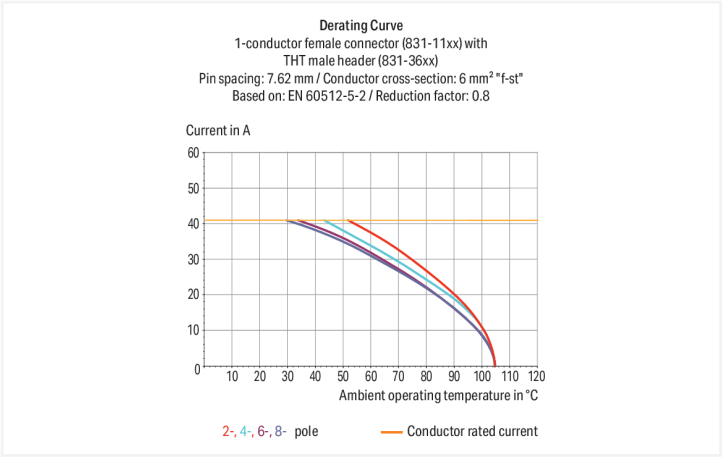
Pole no. 5: A = 15.12 mm

Pole no. 6: A = 15.12 mm

Pole no. 7: A = 22.74 mm

Pole no. 8: A = 22.74 mm

Pole no. 9: A = 30.36 mm





Federleiste/Buchse Serie 831 mit 0 ° Leiterabgang zur Steckrichtung

Bei dieser Federleiste/Buchse (Artikelnummer 831-1102/322-000) ist eine reibungslose Elektroinstallation der Fokus. Unsere Leiterplatten-Steckverbinder geben Ihnen die größtmögliche Flexibilität bei unterschiedlichen Montagearten. Diese Federleiste/Buchse benötigt für den Leiteranschluss eine Abisolierlänge zwischen 11 und 13 mm . Bei diesem Produkt wird die Push-in CAGE CLAMP®-Technologie eingesetzt. Die Push-in CAGE CLAMP® Anschlusstechnik ist der Universalanschluss für alle Leiterarten mit dem Zusatznutzen des direkten Steckens. Starre Leiter sowie feindrähtige Leiter mit Aderendhülse können ohne Werkzeug direkt in die Klemmstelle gesteckt werden. Die Abmessungen sind in Breite x Höhe x Tiefe (17,1 x 31,4 x 45,7) mm. In Abhängigkeit von der Leiterart eignet sich diese Federleiste/Buchse für Leiterquerschnitte von 0,5 mm² bis 10 mm². Die Kontaktoberfläche besteht aus Zinn. Über einen Hebel wird diese Federleiste/Buchse betätigt. Das MCS – "Multi Connection System" von WAGO ist ein vielfältiges Steckverbindersystem für Ihre durchgängige Systemverdrahtung. Es ermöglicht Ihnen eine vereinfachte Verdrahtung in der Kabelvorkonfektionierung und auf Geräten durch zwei Betätigungsrichtungen für die CAGE CLAMP®-Varianten.

Notes	
Safety Information	The MCS – <i>MULTI CONNECTION SYSTEM</i> includes connectors without breaking capacity in accordance with DIN EN 61984. When used as intended, these connectors must not be connected/disconnected when live or under load. When used as intended, these connectors must not be connected/disconnected when live or under load. The circuit design should ensure header pins, which can be touched, are not live when unmated.
Variants:	Other colors Other versions (or variants) can be requested from WAGO Sales or configured at <a href="https://configurator.wago.com/">https://configurator.wago.com/</a> .



Electrical data				
Ratings per		IEC/EN 60664-1		
Overvoltage category	III	III	II	
Pollution degree	3	2	2	
Nominal voltage	800 V	1000 V	1000 V	
Rated surge voltage	8 kV	8 kV	8 kV	
Rated current	41 A	41 A	41 A	
Approvals per		CSA		
Use group	B	C	D	
Rated voltage	-	600 V	600 V	
Rated current	-	35 A	5 A	

Approvals per		UL 1059	
Use group	B	C	D
Rated voltage	-	600 V	600 V
Rated current	-	37 A	5 A

Connection data				
Clamping units	2	Connection 1		
Total number of potentials	2	Connection technology	Push-in CAGE CLAMP®	
Number of connection types	1	Actuation type	Lever	
Number of levels	1	Solid conductor	0.5 ... 10 mm² / 20 ... 8 AWG	
		Fine-stranded conductor	0.5 ... 10 mm² / 20 ... 8 AWG	
		Fine-stranded conductor; with insulated ferrule	0.5 ... 6 mm²	
		Fine-stranded conductor; with uninsulated ferrule	0.5 ... 6 mm²	
		Strip length	11 ... 13 mm / 0.43 ... 0.51 inches	
		Pole number	2	
		Conductor entry direction to mating direction	0°	
Physical data				
Pin spacing	7.62 mm / 0.3 inches			
Width	17.1 mm / 0.675 inches			
Height	31.4 mm / 1.236 inches			
Depth	45.7 mm / 1.799 inches			
Mechanical data				
Variable coding	Yes			
Anti-rotation protection	Yes			
Plug-in connection				
Contact type (pluggable connector)	Female connector/socket			
Connector (connection type)	for conductor			
Mismating protection	Yes			
Locking of plug-in connection	Center locking lever			



Material data		
Note (material data)		<a href="#">Information on material specifications can be found here</a>
Color	light gray	
Material group	I	
Insulation material (main housing)	Polyamide (PA66)	
Flammability class per UL94	V0	
Clamping spring material	Chrome-nickel spring steel (CrNi)	
Contact material	Electrolytic copper (E <sub>Cu</sub> )	
Contact Plating	Tin	
Fire load	0.333 MJ	
Actuator color	orange	
Weight	15.3 g	

Environmental requirements		
Limit temperature range	-60 ... +105 °C	
Processing temperature	-35 ... +60 °C	

Commercial data		
PU (SPU)	24 pcs	
Packaging type	Box	
Country of origin	PL	
GTIN	4066966406108	
Customs tariff number	85366990990	

Product classification		
UNSPSC	39121409	
ETIM 9.0	EC001284	
ETIM 8.0	EC001284	
ECCN	NO US CLASSIFICATION	

Environmental Product Compliance		
RoHS Compliance Status	Compliant, No Exemption	

Approvals / Certificates

General approvals



Approval	Standard	Certificate Name
CB DEKRA Certification B.V.	IEC 61984	NL-61360/M1
CSA DEKRA Certification B.V.	C22.2	1466354
KEMA/KEUR DEKRA Certification B.V.	EN 61984	71-116057
UR Underwriters Laboratories Inc.	UL 1059	E45172



Downloads

Environmental Product Compliance

Compliance Search
Environmental Product Compliance 831-1102/322-000

Documentation

Additional Information
Technical Section
03.04.2019
pdf 2027.26 KB

CAD/CAE-Data

CAD data
2D/3D Models 831-1102/322-000

1 Compatible Products

1.1 System counterpart

1.1.1 Male connector/plug



**Item No.: 831-1202**  
1-conductor male connector; lever; Push-in CAGE CLAMP®; 10 mm²; Pin spacing 7.62 mm; 2-pole; 100% protected against mismatching; 10,00 mm²; light gray



**Item No.: 831-3622**  
THT male header; 1.0 x 1.2 mm solder pin; angled; 100% protected against mismatching; Pin spacing 7.62 mm; 2-pole; light gray



**Item No.: 831-3642**  
THT male header; 1.0 x 1.2 mm solder pin; angled; 100% protected against mismatching; Pin spacing 7.62 mm; 2-pole; light gray



**Item No.: 831-3602**  
THT male header; 1.0 x 1.2 mm solder pin; straight; 100% protected against mismatching; Pin spacing 7.62 mm; 2-pole; light gray

1.2 Optional Accessories

1.2.1 Ferrule

1.2.1.1 Ferrule



**Item No.: 216-262**  
Ferrule; Sleeve for 0.75 mm² / 18 AWG; insulated; electro-tin plated; electrolytic copper; gastight crimped; acc. to DIN 46228, Part 4/09.90; gray



**Item No.: 216-263**  
Ferrule; Sleeve for 1 mm² / AWG 18; insulated; electro-tin plated; electrolytic copper; gastight crimped; acc. to DIN 46228, Part 4/09.90; red



**Item No.: 216-264**  
Ferrule; Sleeve for 1.5 mm² / AWG 16; insulated; electro-tin plated; electrolytic copper; gastight crimped; acc. to DIN 46228, Part 4/09.90; black



**Item No.: 216-284**  
Ferrule; Sleeve for 1.5 mm² / AWG 16; insulated; electro-tin plated; electrolytic copper; gastight crimped; acc. to DIN 46228, Part 4/09.90; black



**Item No.: 216-266**  
Ferrule; Sleeve for 2.5 mm² / AWG 14; insulated; electro-tin plated; electrolytic copper; gastight crimped; acc. to DIN 46228, Part 4/09.90; blue



**Item No.: 216-286**  
Ferrule; Sleeve for 2.5 mm² / AWG 14; insulated; electro-tin plated; electrolytic copper; gastight crimped; acc. to DIN 46228, Part 4/09.90; blue



**Item No.: 216-267**  
Ferrule; Sleeve for 4 mm² / AWG 12; insulated; electro-tin plated; electrolytic copper; gastight crimped; acc. to DIN 46228, Part 4/09.90; gray



**Item No.: 216-287**  
Ferrule; Sleeve for 4 mm² / AWG 12; insulated; electro-tin plated; electrolytic copper; gastight crimped; acc. to DIN 46228, Part 4/09.90; gray

1.2.1.1 Ferrule



**Item No.: 216-208**  
Ferrule; Sleeve for 6 mm<sup>2</sup> / AWG 10; insulated; electro-tin plated; electrolytic copper; gastight crimped; acc. to DIN 46228, Part 4/09.90; yellow



**Item No.: 216-288**  
Ferrule; Sleeve for 6 mm<sup>2</sup> / AWG 10; insulated; electro-tin plated; electrolytic copper; gastight crimped; acc. to DIN 46228, Part 4/09.90; yellow



**Item No.: 216-108**  
Ferrule; Sleeve for 6 mm<sup>2</sup> / AWG 10; uninsulated; electro-tin plated; silver-colored

1.2.2 Strain relief

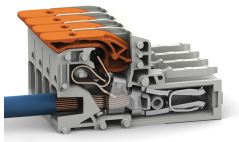
1.2.2.1 Strain relief plate



**Item No.: 831-503**  
Strain relief plate; for female and male connectors; 15 mm wide; 1 part; Pin spacing 7.62 mm; light gray

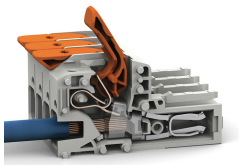
Installation Notes

Conductor termination



Insert solid conductors via push-in termination.

Conductor removal



Insert fine-stranded conductors – and remove all conductors – via operating tool.