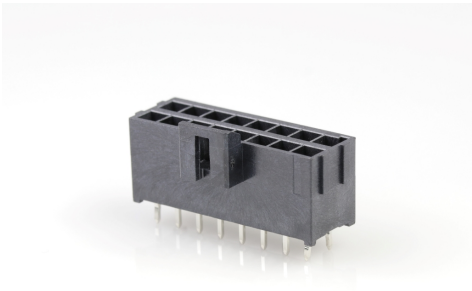




Part Number : [1722981116](#)
Product Description : Ultra-Fit Vertical Header, 3.50mm Pitch, Dual Row, 16 Circuits, with Kinked Pins, Tin (Sn) Plating, Black, Glow-Wire Capable
Series Number : 172298
Status : Active
Product Category : PCB Headers and Receptacles



Documents & Resources


Drawings
[1722981116_sd.pdf](#)
[PK-172298-9001-001.pdf](#)

3D Models and Design Files
[1722981116_stp.zip](#)
[1722981116-000.zip](#)
[SYM-172298-1216-001.zip](#)

Specifications
[1722990000-AS-000.pdf](#)
[1723230003-000.pdf](#)
[AS-172323-0001-001.pdf](#)
[1723230001-TS-000.pdf](#)
[1723231000-PS-CH-000.pdf](#)
[1723231000-PS-ES-000.pdf](#)
[1723231000-PS-JP-000.pdf](#)
[1723231000-PS-SK-000.pdf](#)
[PS-172323-0001-001.pdf](#)

Product Environment Compliance

Compliance

GADSL/IMDS	Compliant with Exemption 44; 33
China RoHS	
EU ELV	Not Relevant
Low-Halogen Status	Low-Halogen per IEC 61249-2-21
REACH SVHC	Not Contained per D(2024)7663-DC (21 Jan 2025)

EU RoHS	Compliant per EU 2015/863
---------	---------------------------

Multiple Part Product Compliance Statements

- Eu RoHS
- REACH SVHC
- Low-Halogen

Multiple Part Industry Compliance Documents

- IPC 1752A Class C
- IPC 1752A Class D
- Molex Product Compliance Declaration
- IEC-62474
- chemSHERPA (xml)

EU RoHS Certificate of Compliance

Part Details

General

Status	Active
Category	PCB Headers and Receptacles
Series	172298
Description	Ultra-Fit Vertical Header, 3.50mm Pitch, Dual Row, 16 Circuits, with Kinked Pins, Tin (Sn) Plating, Black, Glow-Wire Capable
Application	Power, Wire-to-Board
Comments	See Product Specification for maximum current rating by circuit size and wire AWG
Component Type	PCB Header
Product Name	Ultra-Fit
UPC	887191737171

Agency

CSA	LR19980
UL	E29179

Electrical

Current - Maximum per Contact	12.0A
Voltage - Maximum	600V AC (RMS)/DC

Physical

Breakaway	No
Circuits (Loaded)	16
Circuits (maximum)	16
Color - Resin	Black
Durability (mating cycles max)	25
First Mate / Last Break	No
Flammability	94V-0
Glow-Wire Capable	Yes
Guide to Mating Part	No
Keying to Mating Part	Yes
Lock to Mating Part	Yes
Material - Metal	Copper Alloy
Material - Plating Mating	Tin
Material - Plating Termination	Tin
Material - Resin	Liquid Crystal Polymer
Net Weight	3.618/g
Number of Rows	2
Orientation	Vertical
Packaging Type	Tray
PC Tail Length	3.20mm
PCB Locator	Yes
PCB Retention	Yes
PCB Thickness - Recommended	1.60mm
Pitch - Mating Interface	3.50mm
Pitch - Termination Interface	3.50mm
Plating min - Mating	1.524μm
Plating min - Termination	1.524μm
Polarized to Mating Part	Yes
Polarized to PCB	Yes
Shrouded	Fully
Temperature Range - Operating	-40° to +125°C
Termination Interface Style	Through Hole - Kinked Pin

Solder Process Data

Max-Duration	90
Lead-Free Process Capability	WAVE
Max-Cycle	2
Max-Temp	260

Mates With / Use With

Mates with Part(s)

Description	Part Number
Ultra-Fit Tangless Receptacle Housing, 3.50mm Pitch, Dual Row, 16 Circuits, Black, Glow-Wire Capable	<u>1722583116</u>

This document was generated on Apr 26, 2025