

CPU

CPU Name	NXP/Freescale i.MX6
CPU Type	ARM Cortex™-A9
CPU Cores	1-4 (Single, Dual Lite, Dual, Quad, Quad PLUS)
CPU Clock (Max)	1GHz

Memory

RAM	512MB - 4GB DDR3 (1GB DDR3 standard)
NOR Flash	2MB Serial NOR Flash
eMMC	4GB

Multimedia

2D/3D Graphics Acceleration	Vivante™ GC2000 Accelerated 2D and 3D
Video Encode / Decode	1080p60 H.264 Decode, 1080p30 H.264 Encode
Camera Interfaces	1x Parallel, 1x MIPI

Display

HDMI	v1.4 1920 x 1080
LVDS	2X LVDS, 24-bit
RGB	24-bit RGB

Networking

Ethernet	10/100/1GB
----------	------------

Audio

Headphone	Yes
Microphone	Analog MIC

Connectivity

I2C	X3
SPI	x2
UART	Up to 5
SD / MMC	x3 SD/eMMC
USB	USB 2.0: 1x Host, 1x OTG
SATA	SATA II interface, 3.0 Gbps
CAN	x1
PCIe	Gen 2.0
JTAG	Optional - Contact Us

OS Support

NITROGEN6X SOM V2

Next Generation Boundary Devices System on Module (SOM) design featuring NXP's i.MX 6 family of applications processors, expanded RAM, and 4Gb eMMC

0

Nit6QP_SOM_V2_4GB i.MX 6QuadPLUS, 4GB
DDR3, 4GB eMMC

0

Nit6S_SOM_V2 i.MX 6Single, 1GB DDR3, 4GB
eMMC

0

Nit6Q_SOM_V2_2GB i.MX 6Quad, 2GB DDR3,
4GB eMMC

0

Nit6Q_SOMi_V2 i.MX 6Quad, 1GB DDR3, 4GB
eMMC, I-Temp

0

Nit6D_SOM_V2 i.MX 6Dual, 1GB DDR3, 4GB
eMMC

0

Nit6Q_SOM_V2 i.MX 6Quad, 1GB DDR3, 4GB
eMMC

Add to cart

The Nitrogen6X SOM V2 is our next-generation, low cost, highly integrated System-on-Module (SOM) based on the NXP i.MX 6 family of applications processors. The Nitrogen6X SOM V2 is fully compatible with the previous Nitrogen6X SOM, but with some notable improvements, including an i.MX 6 QuadPLUS version. The Nitrogen6 SOM V2 is ideal for customers looking for rapid product development while maintaining the flexibility of a custom design.

The Nitrogen6X SOM V2 has 10 year guaranteed availability and industrial temperature versions including conformal coating options. The Nitrogen6x SOM V2 can be built with NXP i.MX 6 Single, Dual Lite, Dual, Quad, and QuadPLUS Processors. It can also include from 512MB up to 4GB of DDR3 RAM. Email info@boundarydevices.com to discuss all build options.

Notable improvements in V2 include:

- 4GB eMMC
- 2nd LVDS Channel
- Modified power supply architecture to support i.MX6 QuadPLUS processor
- Modified DDR3 layout to support up to 4GB DDR3
- OS Supported: Yocto, Ubuntu, Buildroot, and Android*

NOTE: Nitrogen6X SOM V2 requires a different Uboot/Kernel than Nitrogen6X SOM V1 due to on-board eMMC.

Design your own carrier board or contact us for a custom carrier board quote. If designing your own carrier board, send us your schematics and layout for a no cost, high level review.

CPU	
CPU	
CPU Name	NXP/Freescale i.MX6
CPU Type	ARM Cortex™-A9
CPU Cores	1-4 (Single, Dual Lite, Dual, Quad, Quad PLUS)
CPU Clock (Max)	1GHz

Memory	
CPU	
CPU Name	NXP/Freescale i.MX6
CPU Type	ARM Cortex™-A9
CPU Cores	1-4 (Single, Dual Lite, Dual, Quad, Quad PLUS)
CPU Clock (Max)	1GHz

Memory	
RAM	512MB - 4GB DDR3 (1GB DDR3 standard)
NOR Flash	2MB Serial NOR Flash
eMMC	4GB

Multimedia	
CPU	
CPU Name	NXP/Freescale i.MX6
CPU Type	ARM Cortex™-A9
CPU Cores	1-4 (Single, Dual Lite, Dual, Quad, Quad PLUS)
CPU Clock (Max)	1GHz

Memory	
RAM	512MB - 4GB DDR3 (1GB DDR3 standard)
NOR Flash	2MB Serial NOR Flash
eMMC	4GB

Multimedia	
2D/3D Graphics Acceleration	Vivante™ GC2000 Accelerated 2D and 3D
Video Encode / Decode	1080p60 H.264 Decode, 1080p30 H.264 Encode
Camera Interfaces	1x Parallel, 1x MIPI

Display	
Linux	Yocto, Ubuntu, Buildroot
Android	up to Nougat 7.1.1

Mechanical Specifications	
Dimensions (L x W)	57mm x 63.5mm

Environmental Specifications	
Commercial Temp (0 to 70C)	Yes
Industrial Temp (-40C to +85C)	Optional



Please contact info@boundarydevices.com for more information or with any questions about designing a custom Nitrogen6X SOM V2 or Carrier Board to your exact specifications.



Downloads

 [Nitrogen6X_SOM_V2_Hardware_Manual_rev1](#) 

 [Nit6_SOM_V2](#)  - Register to Download

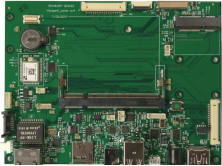
 [Nit6X_SOM_v2 3D STEP](#)  - Register to Download

 [Nit6X_Carrier_Rev4 Schematic](#)  - Register to Download

 [i.MX6 SOM SODIMM connector_20170524](#)  - Register to Download

SOFTWARE SUPPORT

Compatible Products



Nit6X_Carrier



BD101LCC1

10.1" 1280x800 with
PCAP



Nit6X_10.1Hannstar

10.1" 1024x768 with
PCAP



Nit6X_1024x600

CAP Multi-touch



Nit6X_800x480

4-wire touch



Display Integration

Display + Touch
Integration



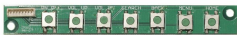
mPCIe to PCI-E DB

mPCIe to PCI-E
Daughter Board



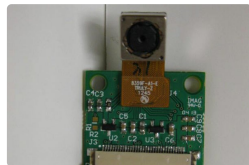
Nit6X_JTAG

i.MX6 JTAG Adaptor



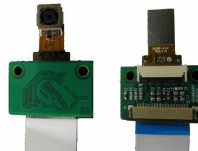
Nit6X_Android

Android Buttons



Nit6X_5MP_MIPI

5MP MIPI Camera



Nit6X_5MP

5MP Camera for
Nit6x/BD-SL-i.MX6



Nit6X_SATA

SATA Cable



MU609

Cellular Modem for
iMX6



[Products](#)

[Custom](#)

[Video Reviews](#)

[Where To Buy](#)

[Support](#)

[Contact](#)

Register for Downloads

Go!

Product Selector Guide

Still not sure about exactly what you
need? Check out our informative guide!

Go!

[Log In](#)

[Blog](#)

[About Us](#)

[Careers](#)

[Privacy Policy](#)

[Return Policy](#)

[Terms and Conditions](#)