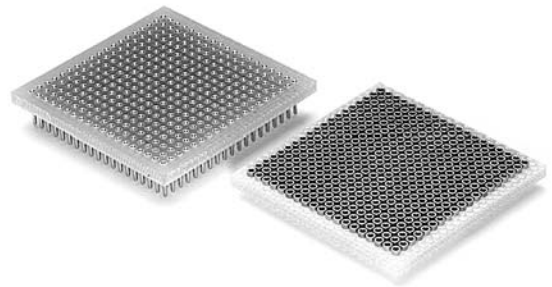
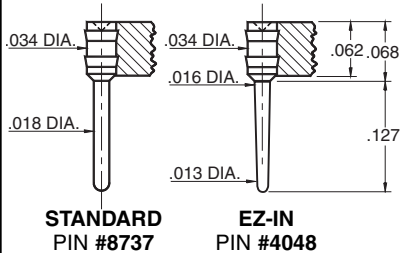


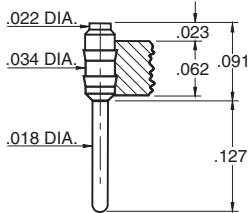
- BGA adapter/socket systems are a reliable way to make BGAs pluggable, they may also be used as a high density board-to-board interconnect.
- The BGA device is soldered to a 8737/4048 adapter (or a 4098/4054 adapter is soldered to a PCB); and then either one can be plugged into a 8214 surface mount socket.
- Both socket and adapter have the same footprint as the BGA device.
- Insertion force is .40N per pin for standard pins 8737/4098. Tapered EZ-IN pins 4048/4054 reduce insertion force to only .08N, and are recommended for pin counts greater than 500. A pry-bar tool (part #828-01-010) is available for extraction.
- Insulator material is FR-4 epoxy having a TCE to match the BGA device and circuit board.



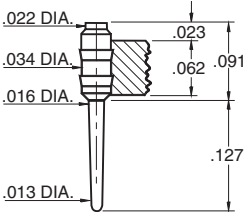
## **BGA MOUNT ADAPTER PINS**



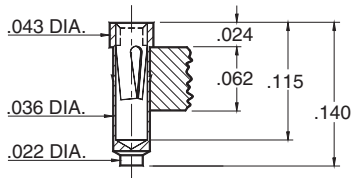
## **PCB MOUNT STANDARD ADAPTER PIN #4098**



## **PCB MOUNT EZ-IN ADAPTER PIN #4054**



## **SMT RECEPTACLE TYPE #8214**



## **Ordering Information**

### **FOR BGA MOUNT ADAPTER PINS**

Series	Plating Code	Window	
5 8 7	- 1 0 -	- - -	- - - 4 3 7 <b>STANDARD</b>
5 4 0	- 1 0 -	- - -	- - - 4 4 8 <b>EZ-IN PIN</b>

### **FOR PCB MOUNT STANDARD ADAPTER PIN**

5 4 0	- 1 0 -	- - -	- - - 4 9 8
-------	---------	-------	-------------

### **FOR PCB MOUNT EZ-IN ADAPTER PIN**

5 4 0	- 1 0 -	- - -	- - - 4 5 4
-------	---------	-------	-------------

No. of pins      Grid size      Pattern #

Determined from footprint pattern pages 113 to 115

PLATING CODE XX=	<b>10</b> ◇		
Pin Plating	10μ" Au		

### **FOR BGA FEMALE SOCKET**

Series	Plating Code	Window	
5 8 2	- 1 1 -	- - -	- - - 4 1 4
5 8 2	- 1 1 -	- - -	- - - 4 1 4

No. of pins      Grid size      Pattern #

Determined from footprint pattern pages 113 to 115

SPECIFY PLATING CODE XX=	<b>11</b> ◇		
Sleeve (Pin)	10μ" Au		
Contact (Clip)	10μ" Au		