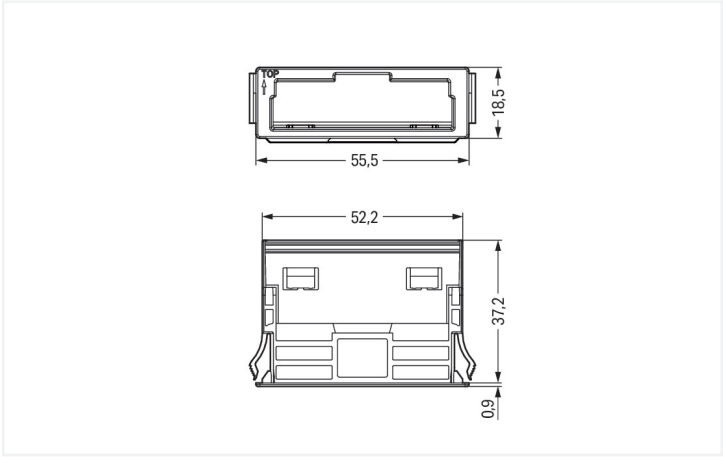




Color: ■ black



Dimensions in mm

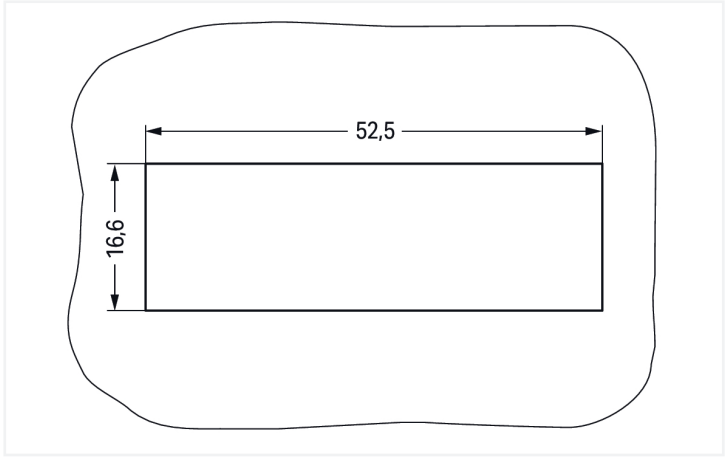


Plate thickness: 1 ... 3 mm
Cutout tolerance: + 0.1 mm

Please note!



Mounting accessories WINSTA® MIDI 5-pole

Realize the energy supply effortlessly: The mounting accessories from the WINSTA® MIDI product line is the solution for error-free electrical installation. With WAGO, you benefit from a large selection of accessories for the WINSTA® product line. The WINSTA® MIDI Pluggable Connection System with Push-in CAGE CLAMP® spring pressure connection technology facilitates precise electrification. Thanks to the built-in test slot, connections can be checked even when they are plugged in. This saves time, labor, and money.

WINSTA® MIDI solutions for your electrical installation – protected against mismatching and maintenance-free

WINSTA® is the pluggable connection system that is optimally tailored to the strict requirements of electrical installation. It offers error-free installation of cables and components, quickly and reliably. Now you can also reduce installation costs without compromising quality and safety: with protection against mismatching reduces the need for servicing and prevents unnecessary downtime.

- pre-assembled versions
- rapid, structured electrical installation

Notes		
Note		The snap-in connectors must be relieved of tensile and transverse forces. A surface finish can influence the edge radius of the cutouts. This may affect the snap-in socket fit, so ensure an adequate fit before use. In addition, the punched edge should be on the inside for punched cutouts. The wings of the snap-in connectors must not be mechanically stressed for a long period before use (e.g., due to a pre-locking position).

Connection data		
Connection 1		
Pole number	5	

Physical data		
Width		55.5 mm / 2.185 inches
Height		18.5 mm / 0.728 inches
Depth		37.5 mm / 1.476 inches

Mechanical data		
Housing sheet thickness		1 ... 3 mm / 0.039 ... 0.118 inches
Mounting type		Snap-in flange
Suitable		for socket and plug

Material data		
Note (material data)		Information on material specifications can be found here
Color		black
Insulation material (main housing)		Polyamide (PA66)
Flammability class per UL94		V0
Fire load		0.158 MJ
Weight		5.3 g



Environmental requirements		
Processing temperature		-5 ... +40 °C
Continuous operating temperature		-35 ... +85 °C
Note on continuous operating temperature		Insulating parts for temperatures ≤ 105 °C

Commercial data		
Product Group		20 (Winsta)
PU (SPU)		100 pcs
Packaging type		Bag
Country of origin		DE
GTIN		4066966073737
Customs tariff number		39269097900

Product classification		
UNSPSC		39121421
eCl@ss 10.0		27-44-06-92
eCl@ss 9.0		27-44-06-92
ETIM 9.0		EC002863
ETIM 8.0		EC002863
ECCN		NO US CLASSIFICATION

Environmental Product Compliance		
RoHS Compliance Status		Compliant, No Exemption

Approvals / Certificates

Approvals for marine applications



Approval	Standard	Certificate Name
LR Lloyds Register	IEC 61984	LR22429487TA

Downloads

Environmental Product Compliance

Compliance Search

Environmental Product Compliance 770-320

Download icon

Documentation

Bid Text			
770-320	19.02.2019	xml 2.67 KB	↓
770-320	10.12.2014	doc 23.50 KB	↓

CAD/CAE-Data

CAD data
2D/3D Models 770-320



CAE data
WSCAD Universe 770-320
ZUKEN Portal 770-320



1 Compatible Products

1.1 Optional Accessories

1.1.1 Locking system

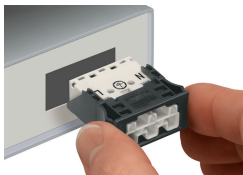
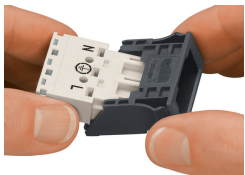
1.1.1.1 Locking system



Item No.: [770-140](#)
Locking lever; for sockets and plugs; for tool operation; gray

Installation Notes

Installation



Insert the socket or plug into the frame (observe the "TOP" marking on the frame!), then snap the assembled unit into the cutout.

Snap the assembled unit into the cutout.