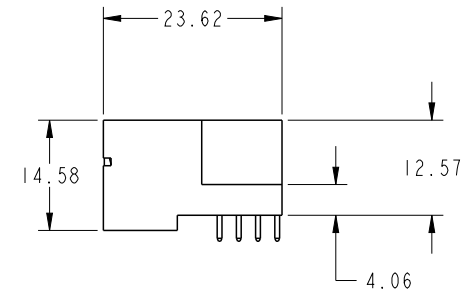
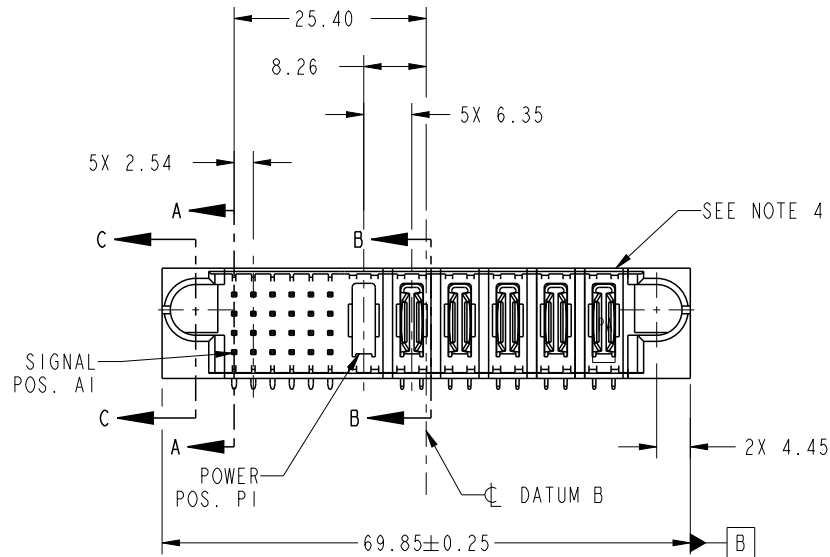




Copyright FCI.

| PRODUCT NO. | ROW S | SIGNAL | | | | | | POWER | | | | | | E2 | |
|-----------------------|------------------|--------|--------|--------|--------|--------|---|-------|----|--------|--------|--------|--------|----|----|
| | | E1 | 1 | 2 | 3 | 4 | 5 | 6 | P1 | P2 | P3 | P4 | P5 | | P6 |
| 51731-079-- NOTE 3 | D C B A | | UUUUUU | TTTTTT | SSSSSS | RRRRRR | | | X | PA | PA | PA | PA | PA | |
| | | | UUUUUU | TTTTTT | SSSSSS | RRRRRR | | | | UUUUUU | UUUUUU | UUUUUU | UUUUUU | | |



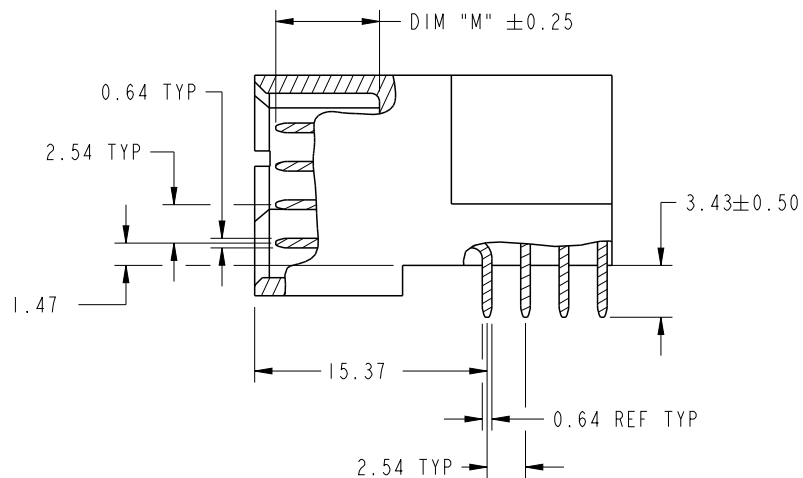
| CODE | DIM "M" MATING LENGTH | CONTACT TYPE |
|------|-----------------------------|-----------------|
| U | [6.86] | SIGNAL |
| T | [6.86] | SIGNAL |
| S | [6.86] | SIGNAL |
| R | [6.86] | SIGNAL |
| PA | [N/A] | POWER |
| X | OMITTED | OMITTED |

| | | | | | | | | | | | | | | | | | | | | | |
|---------------|--|---------------------------------------|--|-------|--|----------------|------------|-------------|------------|----------|--|-----------|----------------|------------------------|----------|--------------|-----------|------|----------|-------|--|
| spec ref | | * | | dr | | X Q Wang | 2011/11/15 | | projection | | | | size | | A4 | | scale | | 1:1 | | |
| tolerance std | | TOLERANCES UNLESS OTHERWISE SPECIFIED | | eng | | X Q Wang | 2011/11/21 | | | | | | ecn no | | - | | rel level | | Released | | |
| SEE NOTE | | | | chr | | - | | - | | | | | | | | | | | | | |
| | | | | appr | | Pei-Ming Zheng | | 2011/11/21 | | | | | product family | | PwrBlade | | | | | | |
| | | | | | | | | | | | | | | | | | | | | | |
| surface | | linear | | | | title | | 24 S + 6 P | | dwg no | | 51731-079 | | rev | | A | | | | | |
| | | | | | | | | | | | | | | | | | | 0.X | | ±0.5 | |
| | | | | | | | | | | | | | | | | | | 0.XX | | ±0.25 | |
| | | | | 0.XXX | | ±0.1 | | | | | | | | | | | | | | | |
| | | angular | | 0° | | ±2° | | www.fci.com | | cat. no. | | - | | Product - Customer Drw | | sheet 1 of 4 | | | | | |

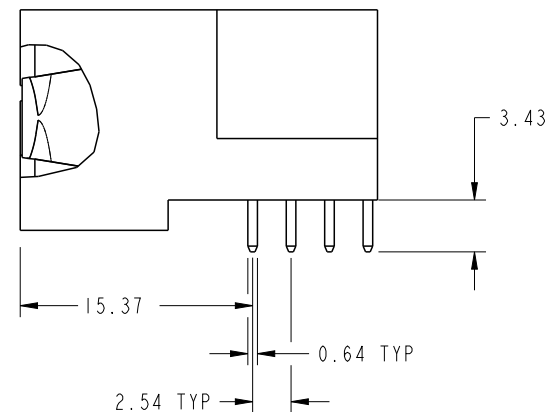
PrintE File - REV C - 2009-06-09

PRODUCT NUMBER

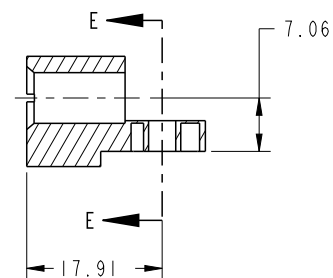
51731-079--
NOTE: 3



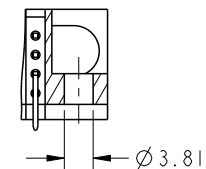
BROKEN-OUT SECTION A-A
SCALE 2:1



BROKEN-OUT SECTION B-B
SCALE 2:1



SECTION C-C

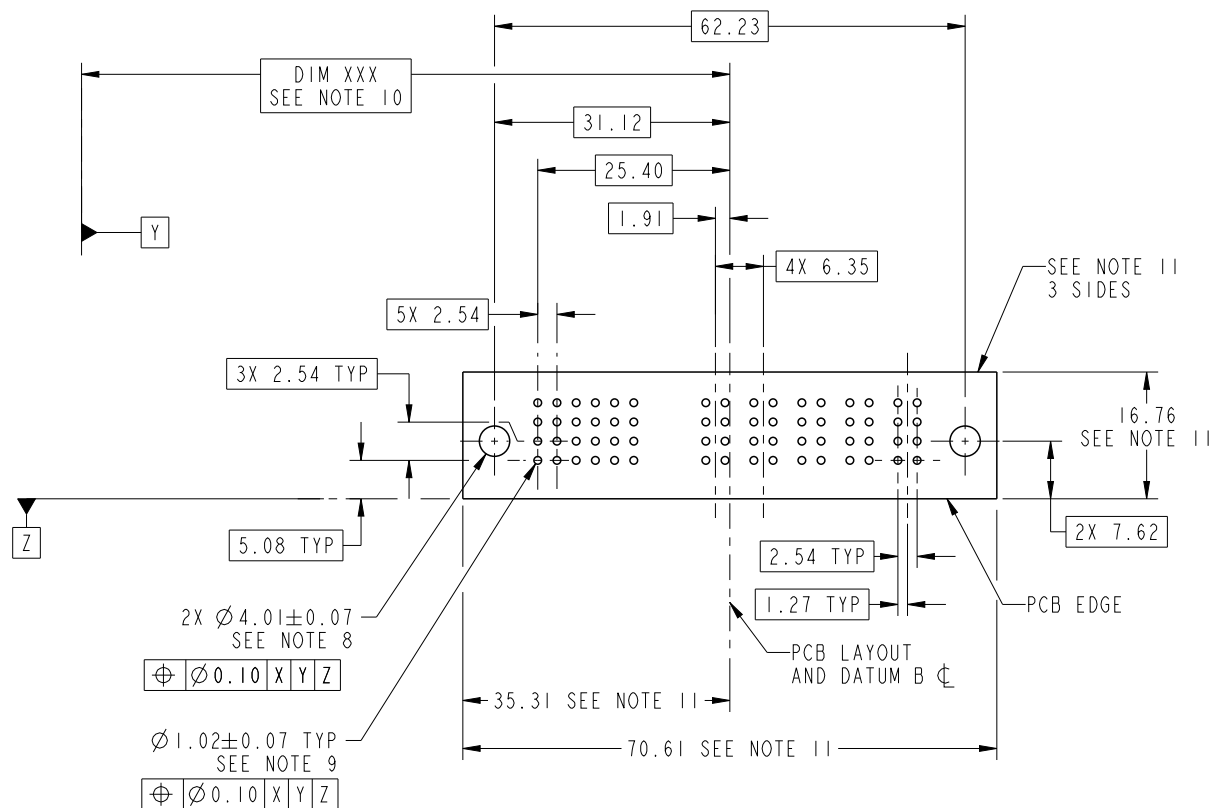


PARTIAL SECTION E-E

| | | | | | | | | |
|-------------|----------------|------------|---|------------------------|-----------|----------|--------------|-----|
| dr | X Q Wang | 2011/11/15 | projection | MM | size | A4 | scale | 1:1 |
| eng | X Q Wang | 2011/11/21 | | | ecn no | - | | |
| chr | - | - | | | rel level | Released | | |
| appr | Pei-Ming Zheng | 2011/11/21 | product family | PwrBlade | | | | |
| | | title | 24 S + 6 P RIGHT ANGLE SOLDER HEADER | | | dwg no | 51731-079 | rev |
| www.fci.com | | cat. no. | - | Product - Customer Drw | | | sheet 2 of 4 | |

PRODUCT NUMBER

51731-079--
NOTE: 3



RECOMMENDED PCB LAYOUT

| | | | | | | | | |
|-------------|----------------|------------|----------------|------------------------|------------|--------------|-------|-----------|
| dr | X Q Wang | 2011/11/15 | projection | MM | size | A4 | scale | 1:1 |
| eng | X Q Wang | 2011/11/21 | | | ecn no | - | | |
| chr | - | - | product family | PwrBlade | rel level | Released | | |
| appr | Pei-Ming Zheng | 2011/11/21 | title | | 24 S + 6 P | dwg no | | 51731-079 |
| www.fci.com | | cat. no. | - | Product - Customer Drw | | sheet 3 of 4 | | rev |
| | | | | | | | | A |



Copyright FCI.

PRODUCT NUMBER

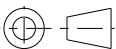


51731-079--
NOTE: 3

NOTES:

1. DIMENSIONS AND TOLERANCES ARE IN ACCORDANCE WITH
ASME Y14.5M, 1994 UNLESS OTHERWISE SPECIFIED.

CONNECTOR NOTES:

2. HOUSING MATERIAL: UL 94 V-0 GLASS FILLED HIGH-TEMP THERMOPLASTIC
POWER CONTACT MATERIAL: COPPER ALLOY
SIGNAL PIN MATERIAL: COPPER ALLOY
 3. SEE ITEM 1 & 2 IN PRINT 10064183 FOR PLATING SPEC OF 51731-079 AND 51731-079LF RESPECTIVELY.
 4. MANUFACTURER'S NAME, DATE CODE AND OPTIONAL P/N TO APPEAR ON
THIS SURFACE. THE P/N CAN BE OMITTED IF THERE IS NOT ENOUGH
SPACE ON THIS SURFACE.
 5. PRODUCT SPECIFICATION GS-12-149.
APPLICATION SPECIFICATION BUS-20-067.
 6. PACKAGED IN TRAYS.
- PCB NOTES:
7. ALL HOLE DIAMETERS ARE FINISHED HOLE SIZE.
 8. MOUNTING HOLES, WHERE APPLICABLE, ARE UNPLATED.
 9. $\varnothing 1.151 \pm 0.025$ DRILLED HOLES PLATED WITH
0.008 MIN SnPb OR Sn OVER 0.03
TO 0.08 Cu PLATING TO ACHIEVE
 $\varnothing 1.02 \pm 0.07$ HOLE.
 10. "DIM XXX" TO BE DETERMINED BY THE CUSTOMER.
 11. CONNECTOR KEEP-OUT ZONE.

| | | | | | | | | | | |
|---|----------------|------------|---|---|---------------------------|-----------|-------|-----------|--------------|-----|
| dr | X Q Wang | 2011/11/15 | <div>projection</div>  | <div>MM</div>  | size | A4 | scale | 1:1 | | |
| eng | X Q Wang | 2011/11/21 | | | ecn no | | | | - | |
| chr | - | - | | | | | | | | |
| appr | Pei-Ming Zheng | 2011/11/21 | product family | | PwrBlade | rel level | | | Released | |
|  | | title | | | 24 S + 6 P | | | dwg no | | rev |
| | | | | | RIGHT ANGLE SOLDER HEADER | | | 51731-079 | | A |
| www.fci.com | | cat. no. | | - | Product - Customer Drw | | | | sheet 4 of 4 | |