



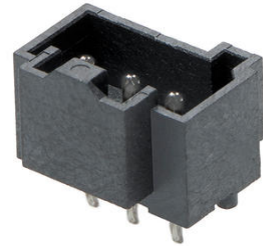
**Part Number :** [2078430003](#)

**Product Description :** KK Plus 250 Header, 2.50mm Pitch, Vertical, Fully Shrouded, Tin (Sn) Plating, 3 Circuits, with Peg, Glow-Wire Capable

**Series Number :** 207843

**Status :** Active

**Product Category :** PCB Headers and Receptacles



---

## Documents and Resources

### Drawings

[2078430003\\_sd.pdf](#)

[2078430000-PK-000.pdf](#)

### 3D Models and Design Files

[STEP AP242](#)

[SOLIDWORKS](#)

[Creo](#)

[Symbol and Footprint \(Multi-Format\)](#)

### Specifications

[2079020001-AS-000.pdf](#)

[2079020001-PS-000.pdf](#)

[2079020001-PS-CH-000.pdf](#)

[2079020001-PS-ES-000.pdf](#)

[2079020001-PS-JP-000.pdf](#)


[2079020001-PS-SK-000.pdf](#)

[2079020000-TS-000.pdf](#)

---

## Product Environment Compliance

### Compliance

GADSL/IMDS	Not Relevant
China RoHS	 per SJ/T 11365-2006
EU ELV	Not Relevant

Low-Halogen Status	Low-Halogen per IEC 61249-2-21
REACH SVHC	Not Contained per D(2025)7771-DC (04 Feb 2026)
EU RoHS	Compliant per EU 2015/863

### Compliance Statements

- EU RoHS
- REACH SVHC
- Low-Halogen

### Industry Documents

- IPC 1752A Class C
- IPC 1752A Class D
- Molex Product Compliance Declaration
- IEC-62474
- chemSHERPA (xml)

### Substances of Interest

- PFAS

### EU RoHS Certificate of Compliance

### Additional Product Compliance Information

## Part Details

### General

Status	Active
Category	PCB Headers and Receptacles
Series	207843
Description	KK Plus 250 Header, 2.50mm Pitch, Vertical, Fully Shrouded, Tin (Sn) Plating, 3 Circuits, with Peg, Glow-Wire Capable
Application	Power, Wire-to-Board
Component Type	PCB Header
Product Name	KK Plus
UPC	191130123131

### Agency

CSA	152514
UL	E29179

## Electrical

Current - Maximum per Contact	6.5A
Voltage - Maximum	250V AC (RMS)/DC

## Physical

Breakaway	No
Circuits (Loaded)	3
Circuits (maximum)	3
Color - Resin	Black
Durability (mating cycles max)	25
First Mate / Last Break	No
Flammability	94V-0
Glow-Wire Capable	Yes
Guide to Mating Part	No
Keying to Mating Part	No
Lock to Mating Part	Yes
Material - Metal	Brass
Material - Plating Mating	Tin
Material - Plating Termination	Tin
Material - Resin	Liquid Crystal Polymer (LCP)
Net Weight	0.455/g
Number of Rows	1
Orientation	Vertical
Packaging Type	Tray
PCB Locator	No
PCB Retention	No
PCB Thickness - Recommended	1.60mm
PC Tail Length	3.45mm
Pitch - Mating Interface	2.50mm
Pitch - Termination Interface	2.50mm
Polarized to Mating Part	Yes
Polarized to PCB	Yes
Shrouded	Shrouded
Stackable	No
Temperature Range - Operating	-40° to +105°C

---

Termination Interface Style	Through Hole
-----------------------------	--------------

---

### Mates With / Use With

#### Mates with Part(s)

Description	Part Number
KK Plus 250 Single Row Receptacle Housings	<u>207841</u>

---

This document was generated on Apr 30, 2026