



© 2018 TE Connectivity Ltd. family of companies. All Rights Reserved

Connectors > PCB Connectors > Board-To-Board Connectors > Board-To-Board Headers & Receptacles

RCPT CON 6H REEL W/ COVER 8U" AU

✓ ACTIVE

TE Part # **2-2316373-1**
TE Internal #: **2-2316373-1**

Connector Assembly Type : **PCB Mount Receptacle**
PCB Mount Orientation : **Vertical**
Connector System : **Board-to-Board**
Number of Positions : **50**
Centerline (Pitch) : **.8 mm [.03 in]**

[Add to List](#) | [Similar Products](#)



ORDER SAMPLES

[Compatible Parts & Tooling](#)



We are here to help!
Get in touch with our product experts.



[CHAT WITH US](#)



[EMAIL US](#)



[CALL US](#)

Please give us feedback:
Did you find what you need on this page?

[YES](#)

[NO](#)

Need help?



Our team is on stand-by and ready to help with your order.

[CHAT NOW](#)



Feedback

Please review product documents or [contact us](#) for the latest agency approval information. Please Note: Use the Product Drawing for all design activity.



Product Type
Features

Connector Assembly Type :
PCB Mount Receptacle

Connector System : **Board-to-Board**

Sealable : **No**

Connector & Contact Terminates To :
Printed Circuit Board

Series : **Free Height (FH)**

Connector Style : **Receptacle**

Connector Type : **Parallel (Stacking)
Configuration**

Product Type : **Connector**

Boss : **Yes**

Configuration
Features

Stackable : **Yes**

PCB Mount Orientation : **Vertical**

Number of Positions : **50**

Board-to-Board Configuration :
Mezzanine

Electrical
Characteristics

Impedance (Ω): **92**

Dielectric Withstanding Voltage (VAC):
500

Insulation Resistance (VAC):
500

Signal
Characteristics

Data Rate (Gb/s): **32**

Body Features

Cover Material : **Mylar**

Feedback

Need help?

Our team is on stand-by and ready to help with your order.

CHAT NOW

>



Contact Features	<div>Contact Mating Area Plating Material : Gold</div> <div>Contact Mating Area Plating Thickness : .2 μm [8 μin]</div> <div>Contact Type : Socket</div> <div>Contact Current Rating (Max) (A): .5</div> <div>Contact Layout Inline</div>
Termination Features	<div>Termination Method to Printed Circuit Board : Surface Mount</div>
Mechanical Attachment	<div>Mating Alignment : With</div> <div>Mating Alignment Type : Polarized</div> <div>PCB Mount Retention : Without</div> <div>PCB Mount Alignment : With</div> <div>Connector Mounting Type : Board Mount</div> <div>PCB Mount Alignment Type Positioning Bosses</div>
Housing Features	<div>Centerline (Pitch) : .8 mm [.03 in]</div> <div>Housing Color : Black</div> <div>Housing Material : LCP (Liquid Crystal Polymer)</div>
Dimensions	<div>Stack Height : 8 mm [.315 in]</div> <div>Height (mm): 6</div>

Feedback

Need help?

Our team is on stand-by and ready to help with your order.

CHAT NOW

>

Usage Conditions

Operating Temperature Range :
-40 – 105 °C [-40 – 221 °F]

Operation/Application

Pick and Place Cover : **With**

Circuit Application : **Signal**

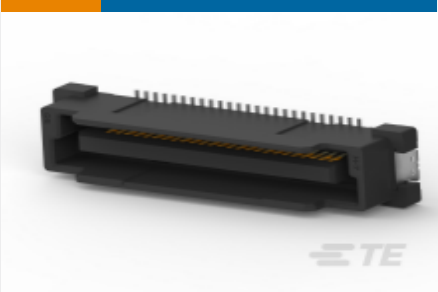
For Use With : **Plug**

Packaging Features

Packaging Method : **Tape & Reel**



Compatible Parts



TE Part # 2-2316375-1
PLUG CON 7H REEL
W/ COVER 8U" AU

[View Product](#)

Feedback

Need help?

Our team is on stand-by and ready to help with your order.

CHAT NOW





Feedback

Need help?

Our team is on stand-by and ready to help with your order.

CHAT NOW

>



Feedback

Need help?

Our team is on stand-by and ready to help with your order.

CHAT NOW

>