



**Part Number :** [936010267](#)

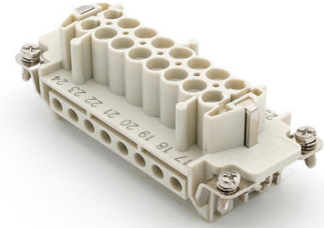
**Product Description :** Heavy-Duty Screw Terminal Insert, Female, 16-Pole, 16A, Numbered 17-32, with Wire Protection, Silver (Ag) Plated Contacts, Size 16B «77x27»

**Series Number :** 93601

**Status :** Active

**Product Category :** Heavy-Duty Connectors

**Engineering Part Number :** 7316.6006.0




---

## Documents and Resources

---

## Product Environment Compliance

### Compliance

GADSL/IMDS	Not Relevant
China RoHS	 per SJ/T 11365-2006
EU ELV	Not Relevant
Low-Halogen Status	Low-Halogen per IEC 61249-2-21
REACH SVHC	Contains Lead per D(2025)7771-DC (04 Feb 2026)
EU RoHS	Compliant with Exemption 6(c) per EU 2015/863

### Compliance Statements

- EU RoHS
- REACH SVHC
- Low-Halogen

### Industry Documents

- IPC 1752A Class C
- IPC 1752A Class D
- Molex Product Compliance Declaration
- IEC-62474
- chemSHERPA (xml)

### Substances of Interest

- PFAS

[EU RoHS Certificate of Compliance](#)

[Additional Product Compliance Information](#)

[UKCA - Declaration of Conformity](#)

[CE - Declaration of Conformity](#)

## Part Details

### General

Status	Active
Category	Heavy Duty Connectors
Series	93601
Description	Heavy-Duty Screw Terminal Insert, Female, 16-Pole, 16A, Numbered 17-32, with Wire Protection, Silver (Ag) Plated Contacts, Size 16B «77x27»
Component Type	Inserts - Screw Terminal
Insert Series	S-E
Product Name	Heavy-Duty Connectors
Standard	CSA C22.2 NO. 182.3, EN 60664-1, EN 61984, UL 1977
UPC	887191880150

### Agency

CSA	256883
UL	E249674

### Electrical

Current - Maximum per Contact	16.0A
Voltage - Maximum	500V
Wire Protection	Yes

### Physical

Component Size	16B «77X27»
Durability (mating cycles max)	700
Gender	Female

Insert Color	Grey
Material - Contact	Copper Alloy
Material - Insert	Polycarbonate
Material - Plating	Silver
Net Weight	84.000/g
Number of Rows	2
Packaging Type	Bag
Polarized to Mating Part	Yes
Poles	16
Stripping Length	7.00mm
Temperature Range - Operating	-40° to +125°C
Tightening Test Torque	0.50 Nm
Wire Size (AWG)	14-20
Wire Size mm <sup>2</sup>	0.50-2.50

---

## Mates With / Use With

### Mates with Part(s)

Description	Part Number
Heavy-Duty Screw Terminal Insert, Male, 16-Pole, 16A, Numbered 17-32, with Wire Protection, Silver (Ag) Plated Contacts, Size 16B «77x27»	<u><a href="#">936010277</a></u>

### Use with Part(s)

Description	Part Number
Use With	Size 16B «77x27» Hoods and Housings

---

This document was generated on Apr 28, 2026