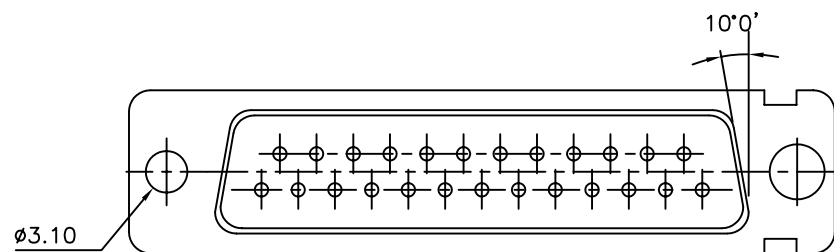
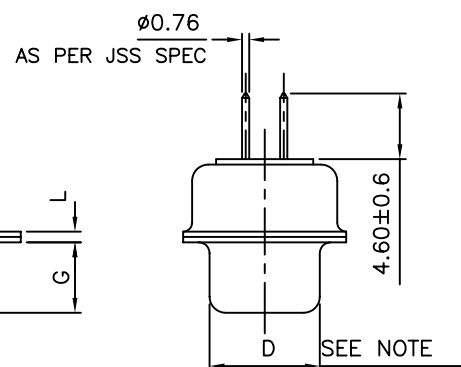
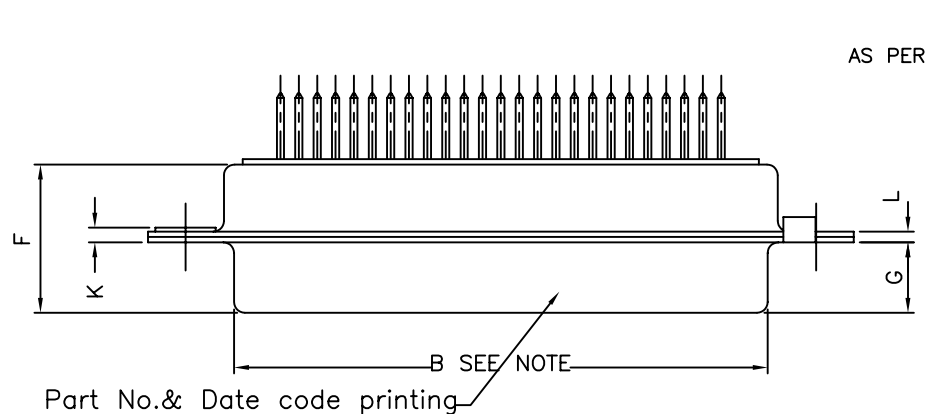
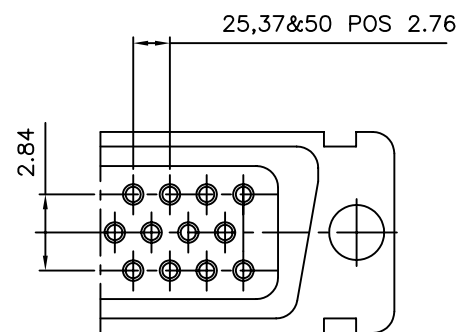
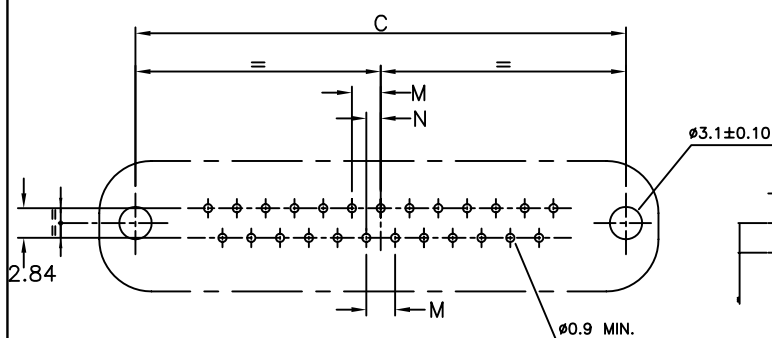


LAYOUT OF 50 POS.CONNECTOR



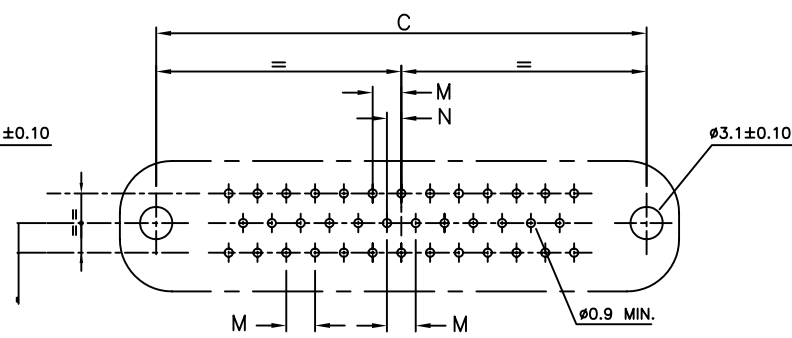
VIEW OF MATING FACE

PCB DRILLING DETAIL - 09 TO 37 POS



M= 2.74 FOR 09&15 POS
2.76 FOR 25,37&50 POS

PCB DRILLING DETAIL - 50 POS



N= 1.37 FOR 09&15 POS
1.38 FOR 25,37&50 POS

50	P	66.65	52.68	61.11	11.08	14.99	11.09	5.85	55.07	13.31	1.50	1.0
	S	66.65	52.30	61.11	10.62	14.99	11.21	6.05	55.07	13.31	1.10	0.8
37	P	68.94	55.30	63.50	8.23	12.17	11.09	5.85	57.45	10.46	1.50	1.0
	S	68.94	54.71	63.50	7.77	12.17	11.21	6.05	57.45	10.46	1.10	0.8
25	P	52.65	38.84	47.04	8.23	12.17	11.07	5.85	41.02	10.46	1.10	0.8
	S	52.65	38.25	47.04	7.77	12.17	11.21	6.05	41.02	10.46	1.10	0.8
15	P	38.76	25.12	33.32	8.23	12.17	10.99	5.85	27.25	10.46	1.10	0.8
	S	38.76	24.54	33.32	7.77	12.17	11.21	6.05	27.25	10.46	1.10	0.8
09	P	30.43	16.79	24.99	8.23	12.17	10.99	5.85	19.02	10.46	1.10	0.8
	S	30.43	16.21	24.99	7.77	12.17	11.21	6.05	19.02	10.46	1.10	0.8
SHELL SIZE		A+0.76 A-0	B+0.25 B-0	C±0.12 C	D+0.25 D-0	E+0.76 E-0	F MAX	G+0.15 G-0	H+0.51 H-0	J+0.51 J-0	K±0.20 K	L+0.22 L-0

NOTE:-INSIDE DIMENSIONS OF MALE
AND OUTSIDE DIMENSIONS OF THE FEMALE CONNECTOR.

TECHNICAL SPECIFICATIONS

SHELLS	: CADMIUM PLATED STEEL
INSULATOR MATERIAL	: SELF EXTINGUISHING THERMOPLASTIC TO UL CLASS 94 V0 THE HOUSING WILL WITHSTAND EXPOSURE TO 260-265°C OR PROTECTIVE METALLIC DEVICE IF WE USE PROTECTIVE ADHESIVE (type Kapton or Teflon)
CONTACTS DIA ON ACTIVE AREA	: Ø1 MM.
CONTACTS MATERIAL	: COPPER ALLOY
CONTACT PLATING	: GOLD OVER NICKEL
OPERATING TEMPERATURE	: -55°C +125°C
OPERATING CURRENT	: 7.5 A PER CONTACT
CONTACT RESISTANCE	: ≤7.3 mΩ
INSULATION RESISTANCE	: ≥5000 MΩ
MAXIMUM VOLTAGE	: 1000 V.r.m.s
MECHANICAL ENDURANCE	: 500 MATINGS FOR ≥1.27μ GOLD PLATING
DAMP HEAT	: 56 DAYS FOR ≥1.27μ GOLD PLATING

ORDERING INFORMATION

SERIES	D B M V 25 P 3 32 N X XXX	SPECIAL CODES
SHELL SIZE	E,A,B,C,D	SHELL PLATING
CHARECTERISATION	M-DM SERIES	BLANK-CADMIUM
OPTIONS	BLANK-STANDARD F-FLOAT MOUNTING V-RIVETTED FEM. SCR LOCK HEX.(UNC)	OPTIONS
NO.OF CONTACTS	09,15,25,37,50	N-OBLIGATORY FOR DM
CONTACTS	P - PIN S - SOCKET	CONTACT PLATING
		32 - 1.27μ Au
		TERMINATION TYPE
		3-STRAIGHT SPILL

mat'l. code SEE NOTE 4				surface ISO 1302 ✓	tolerance ISO 406 ISO 1101	projection MM	product family D-SUB			
ltr	ecn no	dr	date	tolerances unless	otherwise specified		title D-SUB DM S/S CONNECTOR			
A	109-0042	AMR	2009-01-21	angles	linear					
B	109-0190	AMR	2009-09-11							
C	059-09-10	AMR	2010-09-02							
				dr	Abhilash M R	2009-01-21				
				enr	Abhilash M R	2009-01-21				
				chr	Abhilash M R	2009-01-21				
				appd	Sudhir Varma	2009-01-21				
sheet index	revision	C					dwg no			
	sheet	1					sheet 1 of 1			
							size			
							A3			
							type			
							Product Customer Drawing			