

638551-3 ✓ ACTIVE

TE Internal #: 638551-3

TE Internal Description: CONTACT,FEMALE,0.64MM,SN,18-20

[View on TE.com >](#)



Product Compliance

[For compliance documentation, visit the product page on TE.com>](#)

EU RoHS Directive 2011/65/EU	Compliant
EU ELV Directive 2000/53/EC	Compliant
China RoHS 2 Directive MIIT Order No 32, 2016	有害物质含量符合标准要求 No Restricted Substance(s) Above Threshold
EU REACH Regulation (EC) No. 1907/2006	Current ECHA Candidate List: JUNE 2025 (250) Candidate List Declared Against: JUNE 2025 (250) Does not contain REACH SVHC
Halogen Content	Low Halogen - Br, Cl, F < 900 ppm per homogenous material. Also BFR/CFR/PVC Free
Solder Process Capability	Not applicable for solder process capability

Product Compliance Disclaimer

This information is provided based on reasonable inquiry of our suppliers and represents our current actual knowledge based on the information they provided. This information is subject to change. The part numbers that TE has identified as EU RoHS compliant have a maximum concentration of 0.1% by weight in homogenous materials for lead, hexavalent chromium, mercury, PBB, PBDE, DBP, BBP, DEHP, DIBP, and 0.01% for cadmium, or qualify for an exemption to these limits as defined in the Annexes of Directive 2011/65/EU (RoHS2). Finished electrical and electronic equipment products will be CE marked as required by Directive 2011/65/EU. Components may not be CE marked. Additionally, the part numbers that TE has identified as EU ELV compliant have a maximum concentration of 0.1% by weight in homogenous materials for lead, hexavalent chromium, and mercury, and 0.01% for cadmium, or qualify for an exemption to these limits as defined in the Annexes of Directive 2000/53/EC (ELV). Regarding the REACH Regulation, the information TE provides on SVHC in articles for this part number is based on the latest European Chemicals Agency (ECHA) 'Guidance on requirements for substances in articles' posted at this URL: <https://echa.europa.eu/guidance-documents/guidance-on-reach>

Compatible Parts



TE Part # 1355956-3
MK25/60BUGH ASSY47P



TE Part # 5-1355956-5
47 WAY ABS CONNECTOR



TE Part # 638392-1
.64MM PLUG ASSY,KEY A,W/O CPA



TE Part # 1326141-1
32WAY LAC RECEPTACLE CARRIER H



TE Part # 776932-3
52 pos plug, 0.64 and 2.80mm



TE Part # 1355512-2
ABS CONNECTOR ASSY 47P



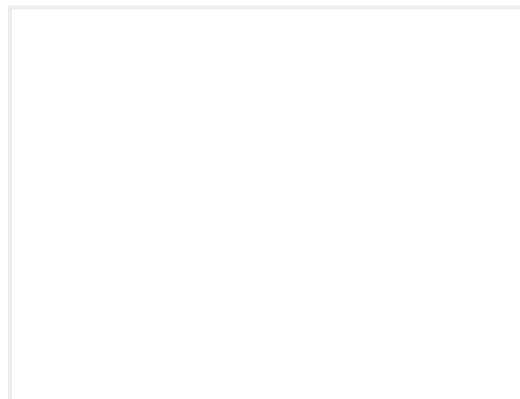
TE Part # 2-1488107-1
OPTION PLUG W/ CPA AND ONLY CI



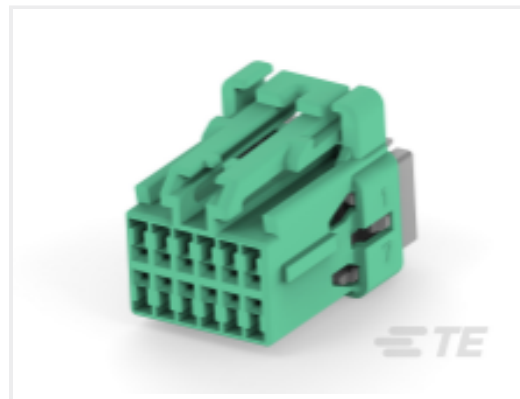
TE Part # 2203937-5
52 pos plug assy, 0.64 and 2.8



TE Part # 638397-1
ASSY, 18P PLUG "A" KEY W/O CPA



TE Part # 1488208-3
0.64MM PIN CONTACT, AU, CRIMP,



TE Part # 638394-4
ASSY,12P PLUG "D" KEY, W/O CPA



TE Part # 9-1355512-3
47 WAY ABS CONNECTOR



TE Part # 1326133-1
RECEPTACLE HOUSING, 18 POSITIO



TE Part # 1438426-3
0.64MM, 2POSN SEALED PLUG, GRA



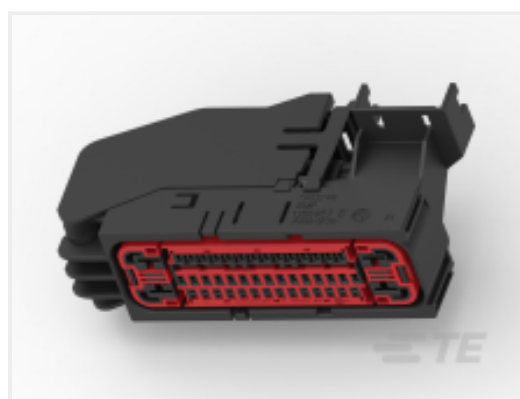
TE Part # 638393-1
10P PLUG ASSY A KEY W/O CPA



TE Part # 1326042-2
LAC CARRIER, 26 POS, 0.64MM, B KEY



TE Part # 638394-1
ASSY,12P PLUG "A" KEY, W/O CPA



TE Part # 9-1355956-0
MK25/60BUGH ASSY47P

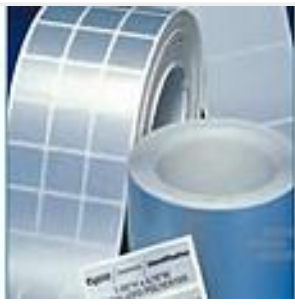


TE Part # 776932-1
52 pos plug assy, 0.64 and 2.8



TE Part # 638393-5
10P PLUG ASSY A KEY -W/ CPA

Customers Also Bought



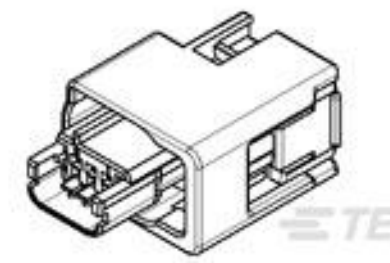
TE Part #A77997-000
WP-508318-2.5-9



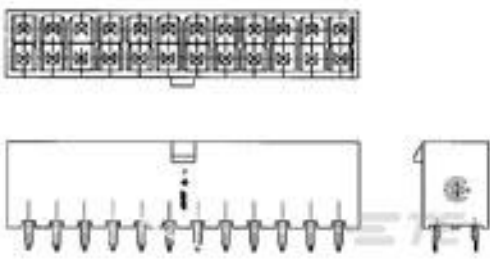
TE Part #C73746-000
T1K-178095-10-9



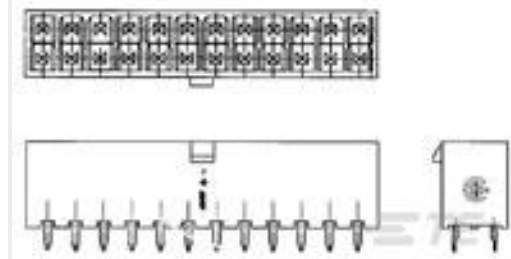
TE Part #638393-5
10P PLUG ASSY A KEY -W/ CPA



TE Part #1438454-1
0.64MM,3 POSN SEALED PLUG ASSY



TE Part #1586768-6
6P VERT HDR VAL-U-LOK GW



TE Part #1-1586768-0
10P VERT HDR VAL-U-LOK GW



TE Part #CAT-N02-MUC063
MQS 0.63mm Unsealed Connector
System



TE Part #1924141-1
Shield, 26P GenY, Hand Mate Conn
System



TE Part #1-2322190-1
18POS,AMP MCP 2.8,REC HSG ASSY,
COD A

Documents

Product Drawings

[CONTACT,FEMALE,0.64MM,SN,18-20](#)

English

CAD Files

Customer View Model

[ENG_CVM_638551-3_B.3d_igs.zip](#)

English

Customer View Model

[ENG_CVM_638551-3_B.3d_stp.zip](#)

English

Customer View Model

[ENG_CVM_638551-3_B.2d_dxf.zip](#)

English

[3D PDF](#)

English

By downloading the CAD file I accept and agree to the [Terms and Conditions](#) of use.

Product Specifications



Application Specification

English

Instruction Sheets

[Instruction Sheet \(U.S.\)](#)

English

[Instruction Sheet \(U.S.\)](#)

English