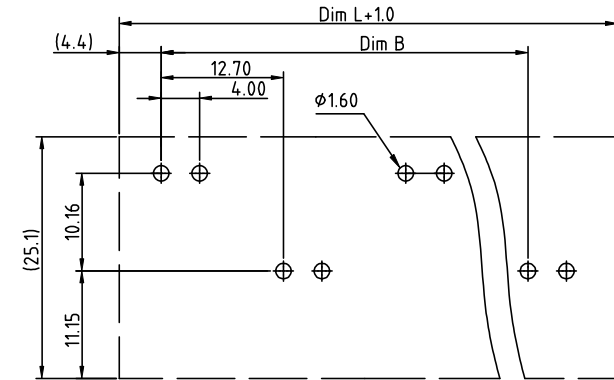
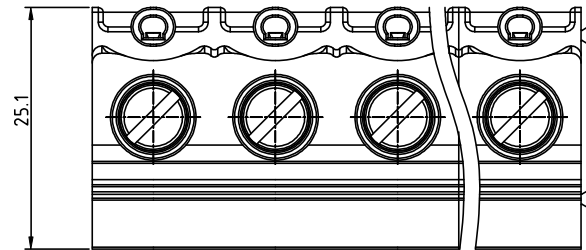
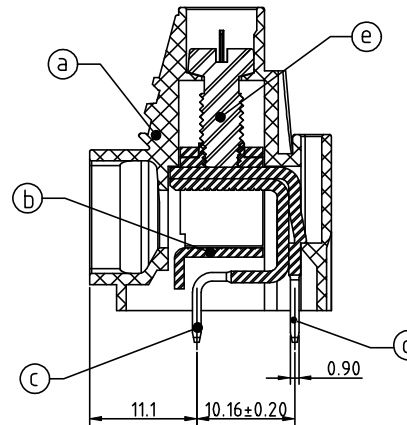
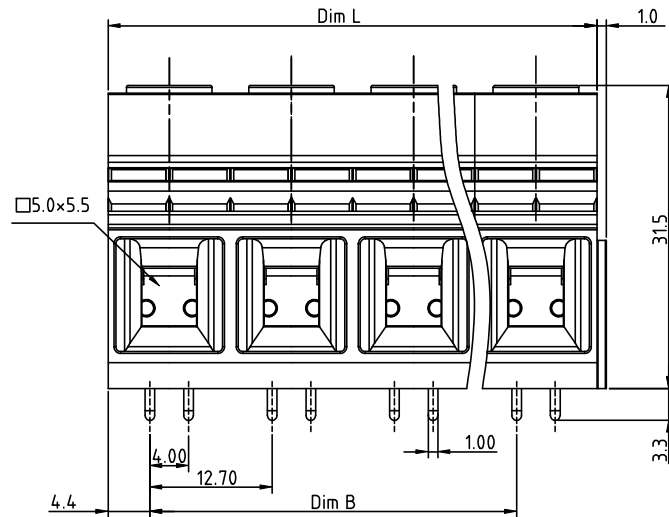


PRODUCT NUMBER	PITCH
VPxx85x700J0G	12.70mm



RECOMMENDED P.C.B LAYOUT
TOP VIEW



Material:

- Item(a) Terminal housing :Thermoplastic (UL 94V-0)
- Item(b) Clamp : Steel stamping , Zinc plated
- Item(c) Solder pin1: Copper ,Tin plated
- Item(d) Solder pin2 : Copper,Tin plated
- Item(e) Terminal screw: Steel Zinc plating"-slot type

Electrical cULs/IEC

- Voltage rating : 600V / 1000V
- Current rating : 65A / 76A
- Wire range :
- Solid wire (AWG) : 6-20 / 16.00mm²
- Stranded wire (AWG) : 6-20 / 16.00mm²
- Torque : 19Lb-In / 1.2N.m
- Screw : M4.5
- Wire strip length : 10-11mm
- Withstanding voltage : 2.2KV 6KV
- Operating temperature : -40°C+115°C
- Soldering temperature : 260°C+5°C/5 Sec
- Safety Approval : cULs US

PART NO.: VP xx 8 5 x 7 00J0 G

N = Number of poles

Dim L=Nx12.70
Dim B=(N-1)x12.70

POLES	Tolerance
2P/4P	±0.15
6P/8P	±0.20
10P/12P	±0.30

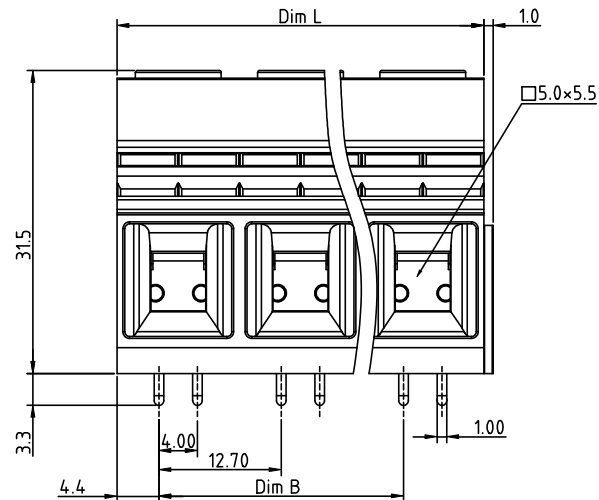
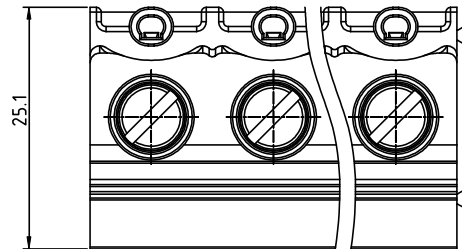
End Stackable
No. of poles
02 2 poles
04 4 poles
...
12 12 poles

Body Color
0 Black (RAL9005)
2 Red (RAL3001/D)
3 Orange(RAL2011/P)
4 Yellow(RAL1018/A)
5 Green(RAL6018/T)
6 Blue (RAL5015/A)
8 Grey(RAL7035/D)
9 White(RAL1102)
C Green(RAL6018/U)

RoHS compliant
(lead<4%)
In copper Alloy

mat'l. code				surface	tolerance	projection	product family	
ltr	ecn no	dr	date	ASME Y14.5	ASME Y14.5		TERMINAL BLOCK	
				tolerances unless otherwise specified		MM [INCH]	title	
				angles	X.±0.5		TERMINAL BLOCK	
				X'±1"	X.X±0.3		RISING CLAMP,DOUBLE TAIL INTERLACE TYPE,EVEN POLES	
				dr	EVIN ZHONG 041414	FCI	scale	
				enrg	EVIN ZHONG 041414		dwg no	
				chr	HANKE FENG 041414		VPxx85x700J0G	
				appd	SHI JUN 041414	FCI	type	
				sheet index	revision sheet		CUSTOMER Drawing	
				A	1			

PRODUCT NUMBER	PITCH
VPxx85x700J0G	12.70mm



PART NO.: VP xx 8 5 x 7 00J0 G

N = Number of poles

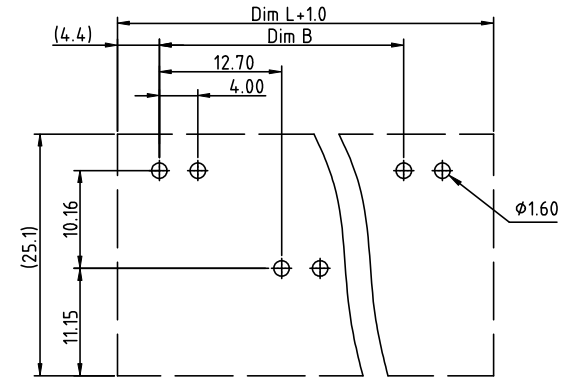
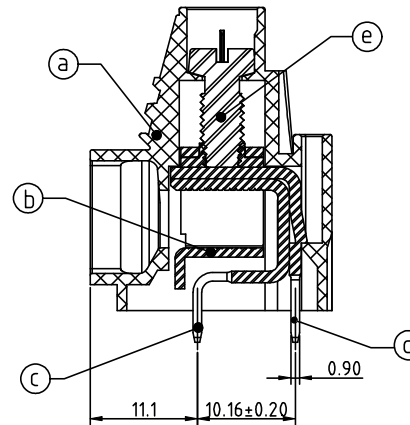
Dim L=N×12.70
Dim B=(N-1)×12.70

POLES	Tolerance
3P/5P	±0.15
7P/9P	±0.20
11P	±0.30

End Stackable
No. of poles
03 3 poles
05 5 poles
...
11 11 poles

Body Color
0 Black (RAL9005)
2 Red (RAL3001/D)
3 Orange(RAL2011/P)
4 Yellow(RAL1018/A)
5 Green(RAL6018/T)
6 Blue (RAL5015/A)
8 Grey(RAL7035/D)
9 White(RAL1102)
C Green(RAL6018/U)

RoHS compliant
(lead<4%)
In copper Alloy




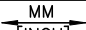

RECOMMENDED P.C.B LAYOUT
TOP VIEW

Material:

- Item①Terminal housing:Thermoplastic (UL 94V-0)
- Item②Clamp: Steel stamping, Zinc plated
- Item③Solder pin1: Copper, Tin plated
- Item④Solder pin2: Copper, Tin plated
- Item⑤Terminal screw: Steel Zinc plating"-slot type

Electrical cULs/IEC

- Voltage rating: 600V / 1000V
- Current rating: 65A / 76A
- Wire range:
- Solid wire (AWG): 6-20 / 16.00mm²
- Stranded wire (AWG): 6-20 / 16.00mm²
- Torque: 19Lb-In / 1.2N.m
- Screw: M4.5
- Wire strip length: 10-11mm
- Withstanding voltage: 2.2KV 6KV
- Operating temperature: -40°C+115°C
- Soldering temperature: 260°C+5°C/5 Sec
- Safety Approval: cULs/IEC

mat'l. code					surface ASME Y14.5 ✓		tolerance ASME Y14.5		projection 		product family TERMINAL BLOCK										
ltr	ecn	no	dr	date	tolerances unless otherwise specified							title TERMINAL BLOCK									
					angles	X.±0.5						RISING CLAMP,DOUBLE TAIL INTERLACE TYPE,ODD POLES									
					linear	X.X±0.3															
						X'±1"															
						X.XX±0.1				scale		dwg no VPxx85x700J0G									
					dr	EVIN ZHONG		041414				sheet 2 of 2 size A4									
					enrg	EVIN ZHONG		041414													
					chr	HANKE FENG		041414													
					appd	SHI JUN		041414													
sheet index		revision sheet		A 2																	