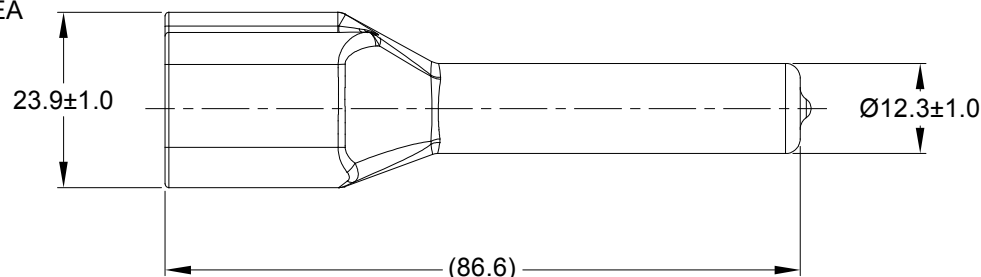
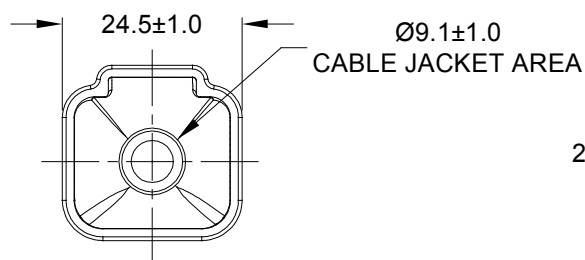
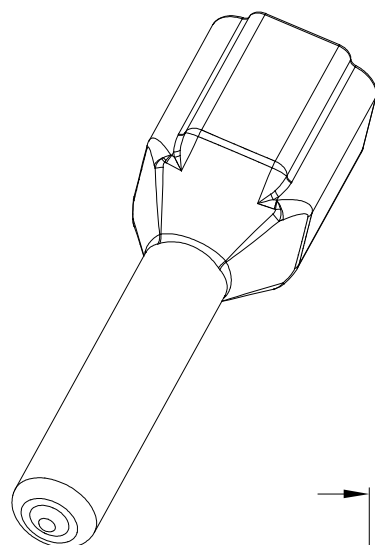



REVISIONS					
REV	ECO	DESCRIPTION	DATE	BY	APPR
A1	-	RELEASE NUMBER	13MAR20	BROOK	TOMMY



PART NUMBER CHART	
COLOR	PART NUMBER
GREY	ATP4P-BT
BLACK	ATP4P-BT-BK
YELLOW	ATP4P-BT-YW

NOTES: UNLESS OTHERWISE SPECIFIED

- THIS PART IS USED ON ATP04-4P RECEPTACLE
ANY MODIFICTION DOES NOT INCLUDE AN END CAP.
- TEMPERATURE RATING : -29°C TO +100°C [-20°F TO +212°F]
- ALL DIMENSIONS ARE FOR REFERENCE USE ONLY.

SEE PART NUMBER CHART		REF: DTP4P-BT ,DTP4P-BT-BK ,DTP4P-BT-YW				
PART NUMBER		DESCRIPTION		ITEM		
QUANTITY	MATERIALS LIST					
UNLESS OTHERWISE SPECIFIED 1) All dimensions are in metric(mm). 2) Tolerances are as follows: 1 PL DEC ±0.30 2 PL DEC ±0.15 3 PL DEC ±0.08 3) Note reference = 		SIGNATURES	DATE	<div>Amphenol</div> <div>Sine Systems - www.amphenol-sine.com 44724 Morley Drive Clinton Township, MI 48036</div>		
DRAWN: BROOK.DING		13MAR20				
CHECKED: ORION.LI		16MAR20				
ENGINEER:						
APPROVAL: TOMMY.XIE		18MAR20	<div>BOOT, ATP ,4 WAY, RECEPTACLE</div>			
CUSTOMER:						
THIS DRAWING IS SUPPLIED FOR INFORMATION ONLY. DESIGN FEATURES, SPECIFICATIONS AND PERFORMANCE DATA SHOWN HEREON ARE THE PROPERTY OF THE AMPHENOL CORPORATION. NO RIGHTS OF REPRODUCTION ARE IMPLIED. ALL DIMENSIONS ARE SUBJECT TO NORMAL MANUFACTURING VARIATIONS.						
MATERIAL SPECIFICATIONS:						
PVC		SIZE		TYPE	DWG NO:	REVISION
PROCESS SPECIFICATIONS:		A		C-	ATP4P-BT-XX	A1
NEXT ASSY:		SCALE: NONE		SHEET 1 OF 1		