



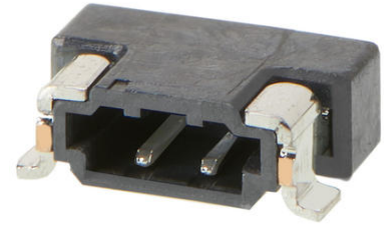
Part Number : [2147210020](#)

Product Description : Zero-Hachi Header, 0.80mm Pitch, Single Row, Right-Angle, Surface Mount, Matte Tin (Sn) Plating, Friction Lock, 2 Circuits, Tape and Reel

Series Number : 214721

Status : Active

Product Category : PCB Headers and Receptacles



Documents and Resources

Drawings

[2147210020_sd.pdf](#)

3D Models and Design Files

[STEP AP242](#)

[SOLIDWORKS](#)

[Creo](#)

[Symbol and Footprint \(Multi-Format\)](#)

[2147210020.dxf](#)


Specifications

[2147219200-SPK-200.pdf](#)

[2147190000-PS-000.pdf](#)

Product Environment Compliance

Compliance

GADSL/IMDS	Compliant with Exemption 44; 33
China RoHS	 per SJ/T 11365-2006
EU ELV	Not Relevant
Low-Halogen Status	Low-Halogen per IEC 61249-2-21
REACH SVHC	Not Contained per D(2025)7771-DC (04 Feb 2026)
EU RoHS	Compliant per EU 2015/863

[Compliance Statements](#)

- EU RoHS
- REACH SVHC
- Low-Halogen

Industry Documents

- IPC 1752A Class C
- IPC 1752A Class D
- Molex Product Compliance Declaration
- IEC-62474
- chemSHERPA (xml)

Substances of Interest

- PFAS

EU RoHS Certificate of Compliance

Additional Product Compliance Information

Part Details

General

Status	Active
Category	PCB Headers and Receptacles
Series	214721
Description	Zero-Hachi Header, 0.80mm Pitch, Single Row, Right-Angle, Surface Mount, Matte Tin (Sn) Plating, Friction Lock, 2 Circuits, Tape and Reel
Application	Signal, Wire-to-Board
Component Type	PCB Header
Product Name	Zero-Hachi
UPC	195842348561

Agency

UL	E29179
----	--------

Electrical

Current - Maximum per Contact	2.5A
Voltage - Maximum	30V AC (RMS)/DC

Physical

Breakaway	No
Circuits (Loaded)	2
Circuits (maximum)	2
Color - Resin	Black
Durability (mating cycles max)	20
First Mate / Last Break	No
Glow-Wire Capable	No
Guide to Mating Part	No
Keying to Mating Part	No
Lock to Mating Part	Yes
Material - Metal	Copper Alloy
Material - Plating Mating	Matte Tin
Material - Plating Termination	Matte Tin
Material - Resin	Liquid Crystal Polymer (LCP)
Net Weight	25.570/mg
Number of Rows	1
Orientation	Right Angle
Packaging Type	Embossed Tape on Reel
PCB Locator	No
PCB Retention	Yes
Pitch - Mating Interface	0.80mm
Pitch - Termination Interface	0.80mm
Plating min - Mating	1.000µm
Plating min - Termination	1.000µm
Polarized to Mating Part	Yes
Polarized to PCB	Yes
Robotic Placement	Vacuum Pick-Up Area
Shrouded	Shrouded
Temperature Range - Operating	-40° to +105°C
Termination Interface Style	Surface Mount
Unmated Height	1.60mm

Mates With / Use With

Mates with Part(s)

Description	Part Number
Zero-Hachi Single Row Receptacle Housings	<u>214719</u>

This document was generated on May 06, 2026