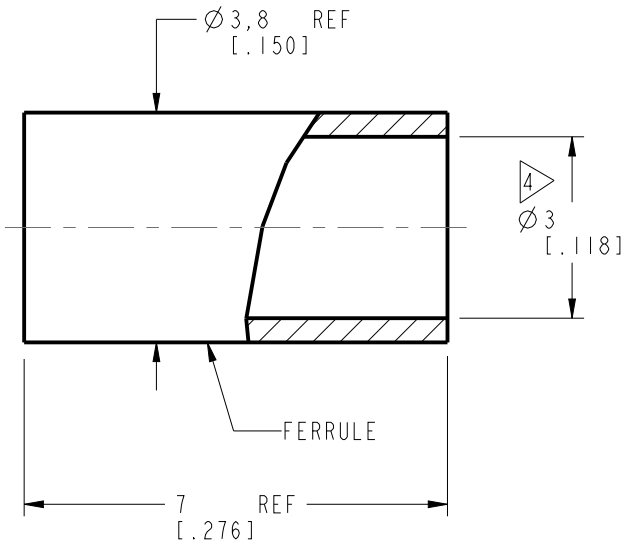
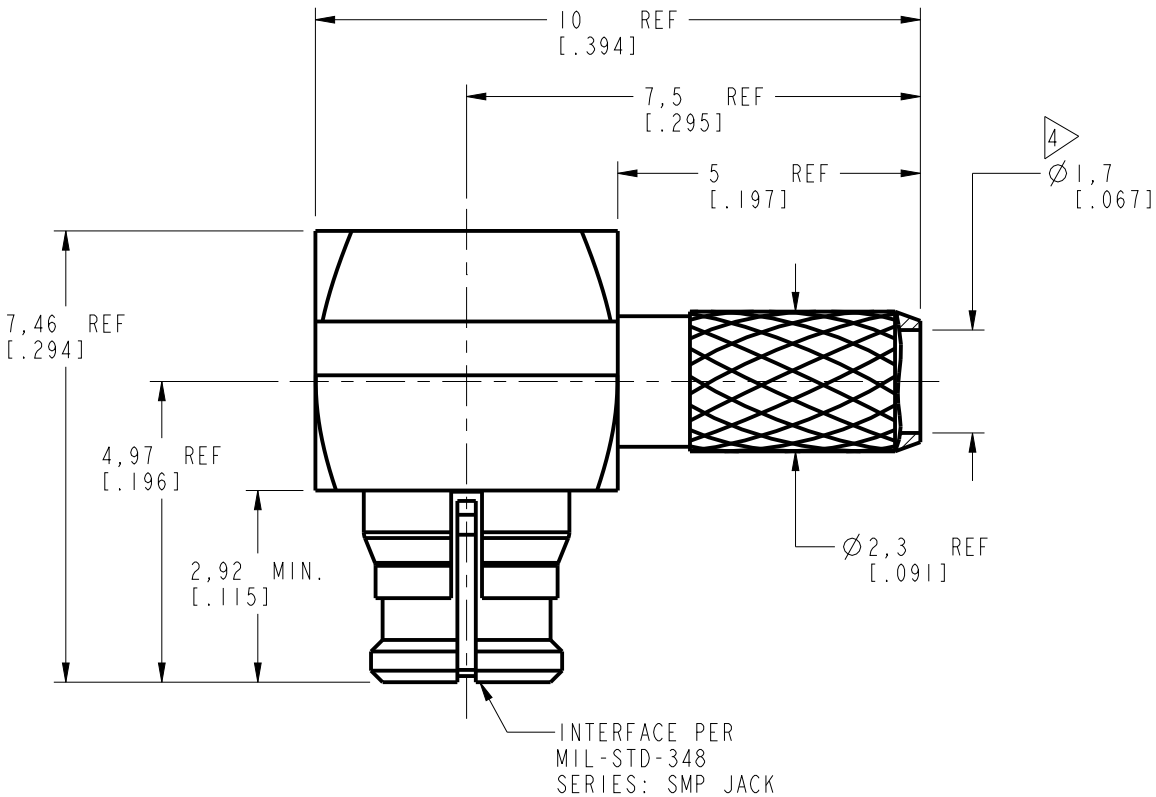
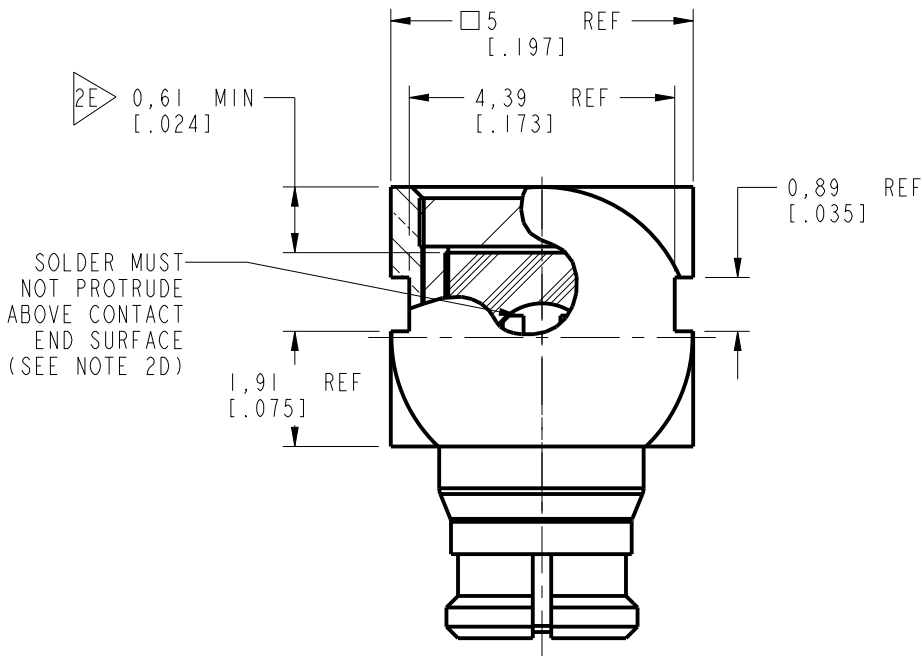
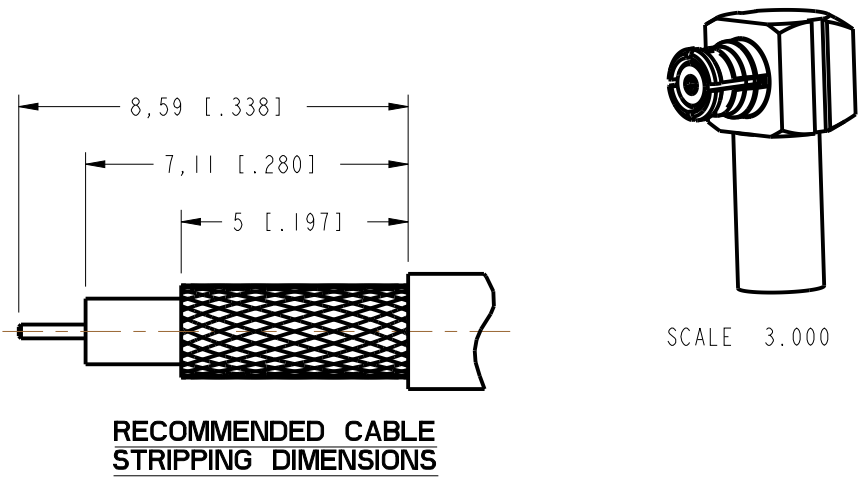
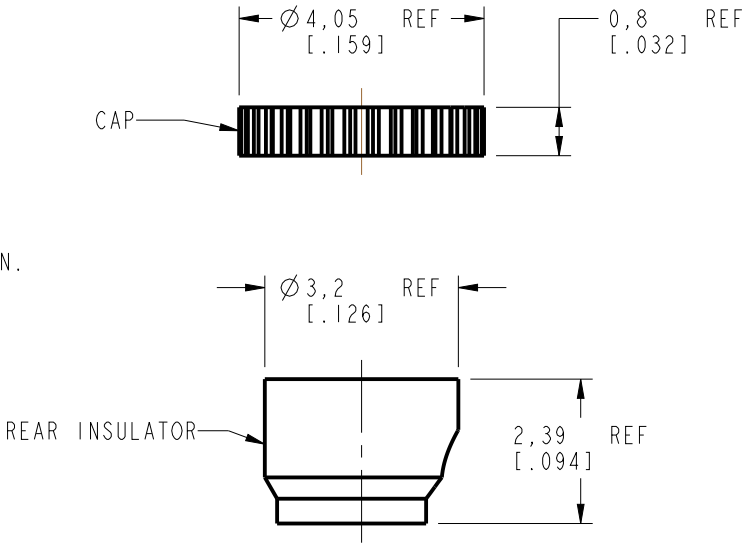


NOTES:

I. MATERIALS AND FINISHES:
HOUSING - BRASS, GOLD PLATING (.000003 MIN THICK)
BODY - BeCu, GOLD PLATING (.000003 MIN THICK)
CONTACT PIN - BeCu, GOLD PLATING (.000030 MIN THICK)

THIRD ANGLE PROJ. 

REVISIONS				
REV	DESCRIPTION	DATE	ECO	APPR
A	RELEASE TO MFG.	04-Nov-16	2061	NR
B	DOCUMENTATION CHANGE ONLY	01-Dec-16	2641	BMG



PRELIMINARY ISSUE

CUSTOMER OUTLINE DRAWING
ALL OTHER SHEETS ARE FOR INTERNAL USE ONLY

UNLESS OTHERWISE SPECIFIED, DIMENSIONS ARE IN INCHES AND TOLERANCES ARE: 2 PLACE DECIMAL 3 PLACE DECIMAL ANGLES ±.015 (0,381 mm) ±.005 (0,127 mm) ± 1° NOTICE - These drawings, specifications, or other data (1) are, and remain the property of Amphenol corp. (2) must be returned upon request; and (3) are confidential and not to be disclosed to any person other than those to whom they are given by Amphenol Corp. the furnishing of these drawings, specifications, or other data by Amphenol Corp., or to any other person to anyone for any purpose is not to be regarded by implication or otherwise in any manner licensing, granting rights to permitting such holder or any other person to manufacture, use or sell any product, process or design, patented or otherwise, that may in any way be related to or disclosed by said drawings, specifications, or other data.	MATERIAL	DRAWN H. PARIKH	DATE 04-Nov-16	TITLE SMP R/A PLUG WITH FEMALE CONTACT FOR RG 316 & RG 174 CABLE		Amphenol RF www.amphenolrf.com	
	SEE NOTES	ENGINEER H. PARIKH	DATE 09-Jun-11			DRAWING NO. SMP-FR-C08-1	
	REFERENCE EAR # 4720 AND 615X-2307-100	APPROVED S.HSIEH	DATE 04-Nov-16	SCALE: 8.0:1.0	SHEET 2 OF 2	ITEM NO. SMP-FR-C08-1	
	CONFIGURATION LEVEL: In Work	CAD FILE	DWG SIZE B		REV B	PART NO. SMP-FR-C08-1	
	FINISH						