

REVISIONS		CHANGES	
ISSUE	DATE	BY	REASON
0	ER 1972	JL	5 FEB 75
1	CN 144488	GA	29 APR 75

DESIGNED BY:	N JACK
REF:	
FINISH:	
SPEC:	
MATL:	
SPEC:	

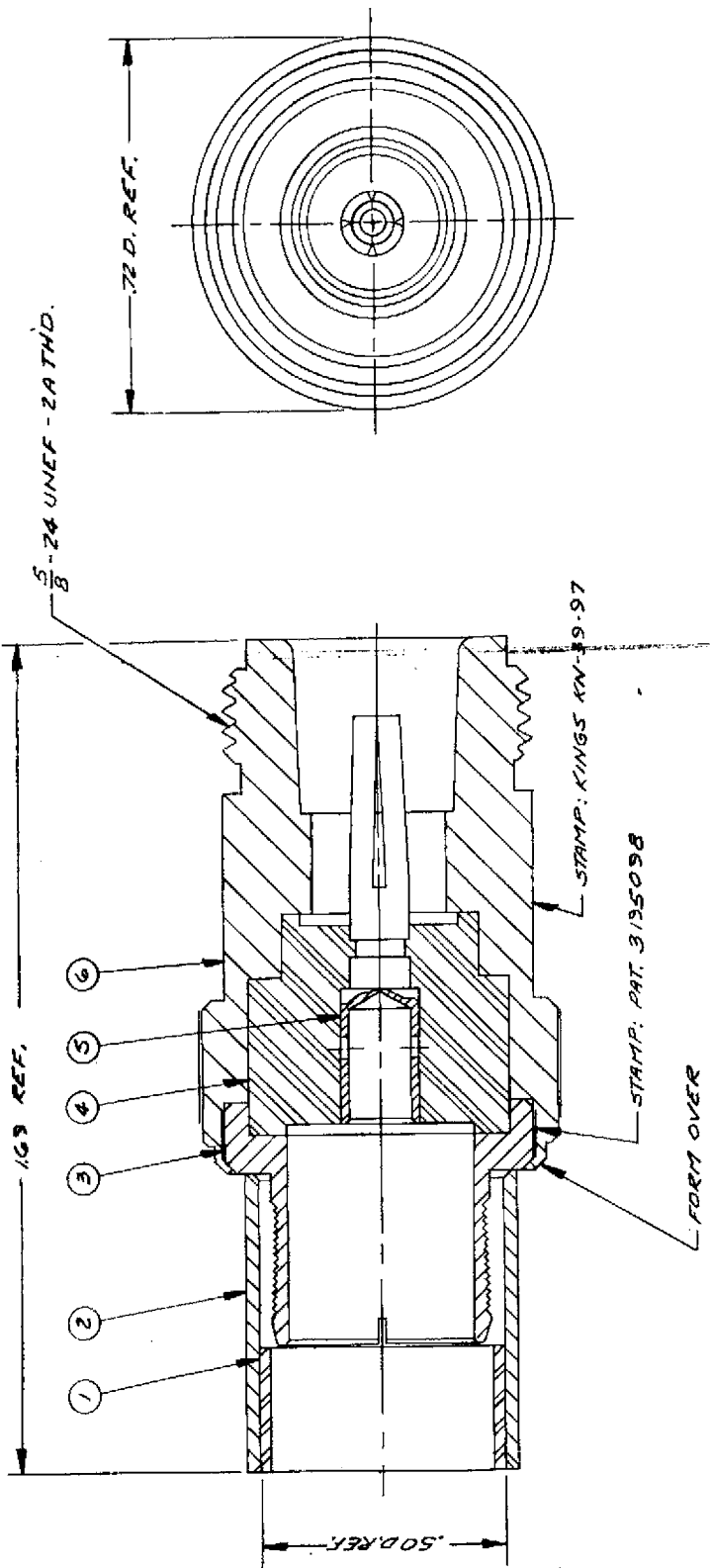
  

DRAWN	JL	DATE	31 JAN 75
APPR.	LI	DATE	5 FEB 75

KINGS ELECTRONICS	
40 MARBLE ROAD	
TUCKAHOE, N. Y. 10707	
KN-39-97	

KN-39-97



NOTES:  
 1. FOR USE WITH NORTHRUP NA1-1253 CABLE.  
 2. FOR CABLING INSTRUCTIONS SEE CP-480.  
 3. FOR CABLE TRIMMING USE KTJ-151 & KTD-204.  
 4. FOR FORMING USE CRIMP DIE SIZE 43.  
 5. ITEM ⑤ TO BE SUPPLIED UNASSEMBLED.  
 6. ITEM ③ MUST BE CAPABLE OF WITHSTANDING A 36 IN.LB. TORQUE RELATIVE TO ITEM ⑤.

UNLESS OTHERWISE SPECIFIED:  
 1. TOLERANCES: FRACTIONS & 2 PLACE DECIMALS ±.010  
 3 PLACE DECIMALS ±.005  
 2. REMOVE ALL BURRS. BREAK SHARP EDGES .005 MAX.  
 3. NO FILLETS PERMITTED.  
 4. SURFACE ROUGHNESS 63 MICROINCHES RMS MAX.  
 5. ALL DIMENSIONS PRIOR TO PLATING.  
 6. DIMENSIONS MAY NOT EXCEED HALF THE SUM OF THEIR TOLERANCES.

DASH NO. DESCRIPTION MADE FROM