

Aluminum Capacitors

MECHANICAL DATA

CLAMPS FOR ST TYPES:

154/155 PEC-ST; 114/115 PED-ST; 111/112 PER-ST; 105 PLL-ST

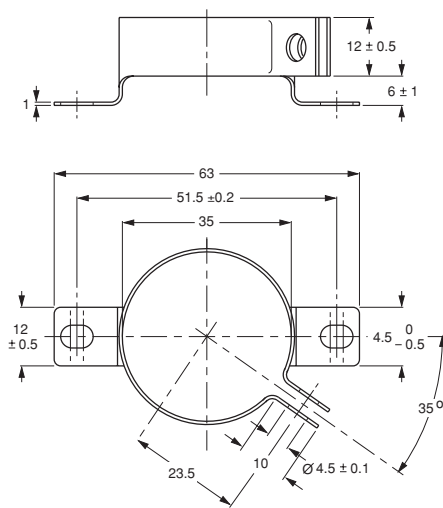
To facilitate vertical mounting, a series of rigid clamps made of zinc plated steel are available.

The clamps have either two or three mounting lugs, may be easily slipped over the capacitor and then clamped with a nut and bolt. Four types of clamps are available, one for each case diameter.

They are delivered without nuts or bolts.

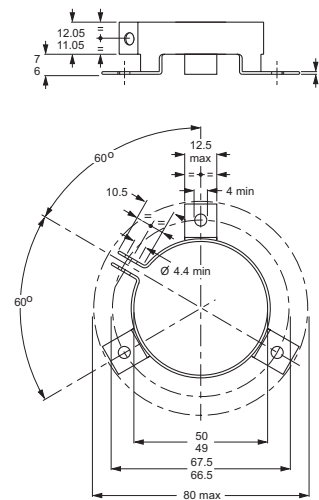
To avoid damaging the insulation sleeve, do not overtighten the clamp screw.

DIMENSIONS in millimeters **AND AVAILABLE FORMS**



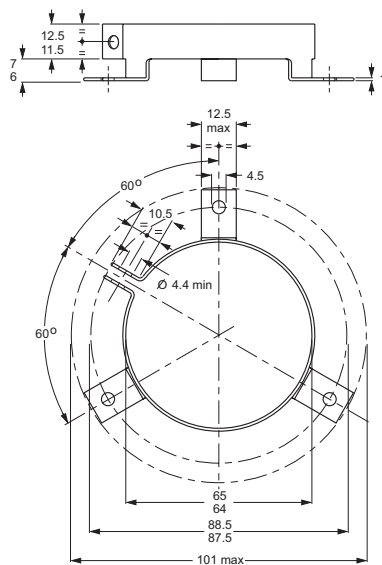
Catalog number: 4322 043 04272.

Fig.1 Dimensional outline of clamp for case ØD = 35 mm.



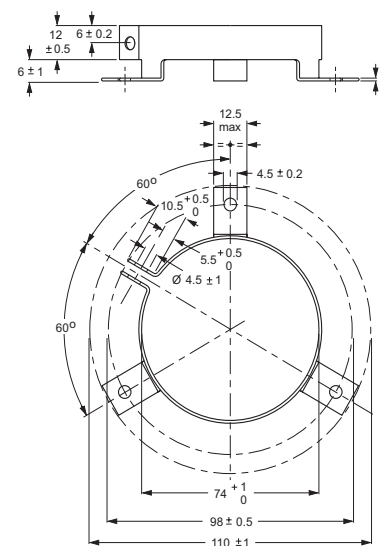
Catalog number: 4322 043 04281.

Fig.2 Dimensional outline of clamp for case ØD = 50 mm.



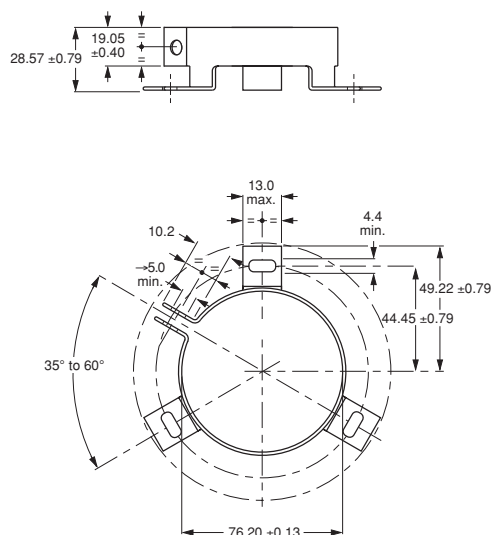
Catalog number: 4322 043 04291.

Fig.3 Dimensional outline of clamp for case ØD = 65 mm.



Catalog number: 4322 043 12991.

Fig.4 Dimensional outline of clamp for case ØD = 75 mm.



Catalog number: 4322 043 20371.

Fig.5 Dimensional outline of clamp for case $\varnothing D = 76$ mm.

NUTS AND WASHERS FOR STB-VERSIONS

When mounting with the bolt, which is an integral part of the case, standard metal M8 and M12 nuts and washers may be used; the maximum permissible torque is 4 Nm for M8 nuts and 10 Nm for M12 nuts.

If insulated mounting is required, synthetic nuts and rubber washers are available; for these nuts the maximum permissible torque is 2 Nm (M8) and 4 Nm (M12).

DIMENSIONS in millimeters AND AVAILABLE FORMS

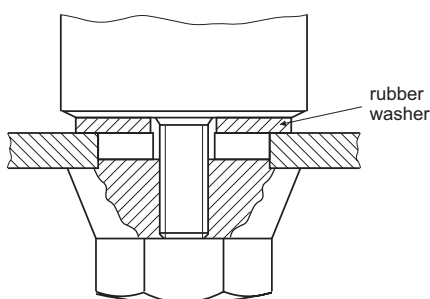


Fig.6 Insulated mounting.

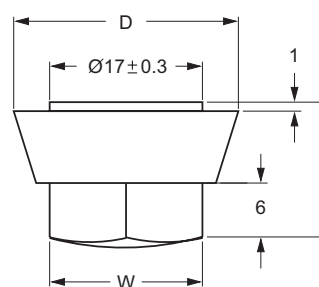


Fig.7 Synthetic cap nut; see Table 1 for dimensions D, H and W.

Table 1

DIMENSIONS OF SYNTHETIC CAP NUT						
CASE DIAMETER (mm)	THREAD	D (mm)	H (mm)	W ⁽¹⁾ (mm)	MIN. THREADED DEPTH (mm)	CATALOG NUMBER
35	M8	25	15	17	11.5	4322 043 05561
≥50	M12	30	20	19	15.5	4322 043 05571

Note

1. Dimension W is measured across flats.

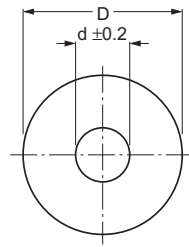


Fig.8 Rubber washer; thickness 2 mm.

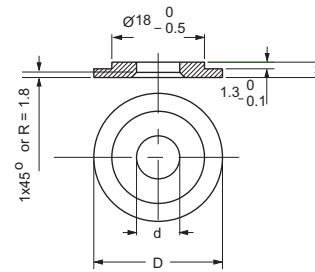


Fig.9 Insulating shoulder disk.

RUBBER WASHER ORDERING CODES		
D (mm)	d (mm)	CATALOG NUMBER
34	8.4	4322 043 05591
49	13.0	4322 043 05531
64	13.0	4322 043 05521
74	13.0	4322 043 13001

INSULATING SHOULDER DISK		
D (mm)	d (mm)	CATALOG NUMBER
25	8.4	4322 043 20381
30	12.5	4322 043 20391

CLAMPS FOR SL-VERSIONS, ØD = 25, 30, 35 and 40 mm

To facilitate vertical mounting, a series of rigid clamps made of zinc plated steel are available.

The clamps have two mounting lugs, may be easily slipped over the capacitor and then clamped with a nut and bolt. Four types of clamps are available, one for each case diameter.

They are delivered without nuts or bolts.

To avoid damaging the insulation sleeve, do not overtighten the clamp screw.

DIMENSIONS in millimeters

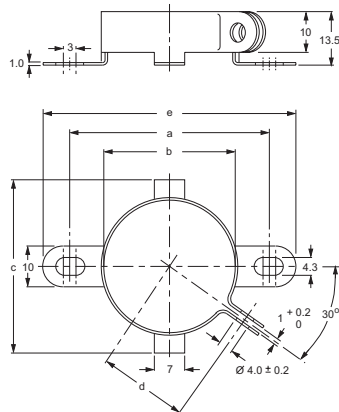


Fig.10 Dimensional outline of clamp for case ØD = 25, 30 and 40 mm.

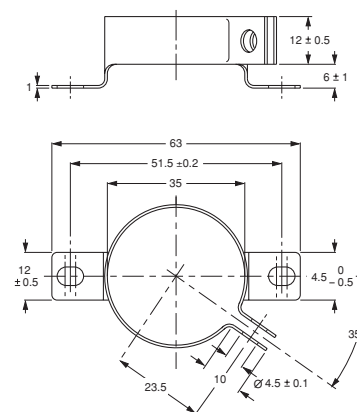


Fig.11 Dimensional outline of clamp for case ØD = 35 mm.

Table 2

CLAMP DIMENSIONS						
CASE DIAMETER	a	b	c	d	e	CATALOG NUMBER
25	41.5 ± 0.2	25	35	18.5	56	4322 043 03301
30	46.5 ± 0.2	30	40	21	61	4322 043 03311
35	51.5 ± 0.2	35	—	23.5	63	4322 043 04272
40	56.5 ± 0.2	40	50	26	71	4322 043 03331