



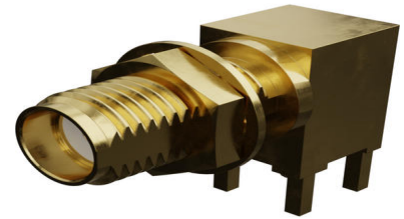
**Part Number :** [732512209](#)

**Product Description :** SMA Jack, Right-Angle, Bulkhead Receptacle, PCB, Through Hole, Brass Body, Gold (Au) Plated, Jam Nut and Lockwasher Included, 3.94mm Leg Length, 50 Pieces Per Tray, 50 Ohms

**Series Number :** 73251

**Status :** Active

**Product Category :** RF / Coaxial Connectors



---

## Documents and Resources

### Drawings

[732512209 sd.pdf](#)

### 3D Models and Design Files

[STEP AP242](#)

[SOLIDWORKS](#)

[Creo](#)


### Specifications

[PS-89675-346-001.pdf](#)

---

## Product Environment Compliance

### Compliance

GADSL/IMDS	Not Relevant
China RoHS	 per SJ/T 11365-2006
EU ELV	Not Relevant
Low-Halogen Status	Low-Halogen per IEC 61249-2-21
REACH SVHC	Contains Lead per ED/71/2019 (16 July 2019)
EU RoHS	Compliant with Exemption 6(c) per EU 2015/863

### Compliance Statements

- EU RoHS
- REACH SVHC

- Low-Halogen

#### Industry Documents

- IPC 1752A Class C
- IPC 1752A Class D
- Molex Product Compliance Declaration
- IEC-62474
- chemSHERPA (xml)

#### Substances of Interest

- PFAS

#### EU RoHS Certificate of Compliance

#### Additional Product Compliance Information

## Part Details

### General

Status	Active
Category	RF / Coaxial Connectors
Series	73251
Description	SMA Jack, Right-Angle, Bulkhead Receptacle, PCB, Through Hole, Brass Body, Gold (Au) Plated, Jam Nut and Lockwasher Included, 3.94mm Leg Length, 50 Pieces Per Tray, 50 Ohms
Application	RF
Product Name	SMA
Style	PCB
Type	Subminiature
UPC	889056192538

### Electrical

Frequency	18 GHz
Impedance	50Ω
Power / Voltage	VOLTAGE: 500 Vrms@Sea Level

### Physical

Cable Attachment	N/A
Gender	Jack

Keying to Mating Part	N/A
Net Weight	5.945/g
Orientation	Right Angle
Packaging Type	Tray
Panel Mount	Yes
Panel Mount Method	Bulkhead
PCB Mounting	Through Hole
PCB Thickness - Recommended	3.81mm
Reverse Polar	No
Wire/Cable Type	N/A

---

This document was generated on Dec 16, 2025