



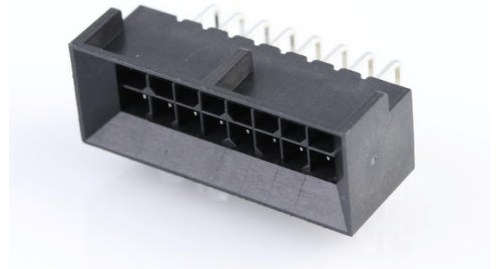
**Part Number :** [444281605](#)

**Product Description :** Micro-Fit BMI Header, Surface Mount Compatible, Dual Row, Right-Angle, without Snap-in Plastic Peg PCB Lock, 16 Circuits, 0.38µm Gold (Au) Selective Plating

**Series Number :** 44428

**Status :** Active

**Product Category :** PCB Headers and Receptacles



---

## Documents and Resources

### Drawings

[444281605 sd.pdf](#)

[PK-44428-001-001.pdf](#)

### 3D Models and Design Files

[STEP AP242](#)

[SOLIDWORKS](#)

[Creo](#)

[Symbol and Footprint \(Multi-Format\)](#)

[SYM-44428-1604 6-001.zip](#)

### Specifications

[PS-44300-001-001.pdf](#)


[443000002-TS-000.pdf](#)

[444280001-TS-000.pdf](#)

---

## Product Environment Compliance

### Compliance

|                    |   |
|--------------------|---|
| GADSL/IMDS         | Not Relevant  |
| China RoHS         |  per SJ/T 11365-2006 |
| EU ELV             | Not Relevant  |
| Low-Halogen Status | Not Low-Halogen per IEC 61249-2-21  |
| REACH SVHC         | Not Contained per D(2025)4165-  |

|         |                           |
|---------|---------------------------|
|         | DC (25 June 2025)         |
| EU RoHS | Compliant per EU 2015/863 |

### Compliance Statements

- EU RoHS
- REACH SVHC
- Low-Halogen

### Industry Documents

- IPC 1752A Class C
- IPC 1752A Class D
- Molex Product Compliance Declaration
- IEC-62474
- chemSHERPA (xml)

### Substances of Interest

- PFAS

### EU RoHS Certificate of Compliance

### Additional Product Compliance Information

## Part Details

### General

|                |  |
|----------------|--|
| Status         | Active   |
| Category       | PCB Headers and Receptacles  |
| Series         | 44428  |
| Description    | Micro-Fit BMI Header, Surface Mount Compatible, Dual Row, Right-Angle, without Snap-in Plastic Peg PCB Lock, 16 Circuits, 0.38µm Gold (Au) Selective Plating |
| Application    | Board-to-Board, Power, Wire-to-Board   |
| Comments       | High Temperature, Square Pin, Solder Type, Polarized to Mating Part  |
| Component Type | PCB Header   |
| Product Name   | Micro-Fit BMI  |
| UPC            | 756054349571   |

### Agency

|     |         |
|-----|---------|
| CSA | LR19980 |
| UL  | E29179  |

## Electrical

|                               |      |
|-------------------------------|------|
| Current - Maximum per Contact | 8.5A |
| Voltage - Maximum             | 600V |

## Physical

|                                |             |
|--------------------------------|-------------|
| Breakaway                      | No          |
| Circuits (Loaded)              | 16          |
| Circuits (maximum)             | 16          |
| Color - Resin                  | Black       |
| Durability (mating cycles max) | 30          |
| First Mate / Last Break        | No          |
| Glow-Wire Capable              | No          |
| Guide to Mating Part           | No          |
| Keying to Mating Part          | None        |
| Lock to Mating Part            | Yes         |
| Material - Metal               | Brass       |
| Material - Plating Mating      | Gold        |
| Material - Plating Termination | Tin         |
| Material - Resin               | Nylon       |
| Net Weight                     | 3.373/g     |
| Number of Rows                 | 2           |
| Orientation                    | Right Angle |
| Packaging Type                 | Tray        |
| PCB Locator                    | Yes         |
| PCB Retention                  | None        |
| PCB Thickness - Recommended    | 1.60mm      |
| PC Tail Length                 | 3.50mm      |
| Pitch - Mating Interface       | 3.00mm      |
| Plating min - Mating           | 0.381µm     |
| Plating min - Termination      | 2.540µm     |
| Polarized to PCB               | Yes         |
| Shrouded                       | Fully       |

|                               |                |
|-------------------------------|----------------|
| Stackable                     | No             |
| Temperature Range - Operating | -40° to +105°C |
| Termination Interface Style   | Through Hole   |

### Solder Process Data

|                              |      |
|------------------------------|------|
| Max-Duration                 | 5    |
| Lead-Free Process Capability | WAVE |
| Max-Cycle                    | 1    |
| Max-Temp                     | 260  |

---

### Mates With / Use With

#### Mates with Part(s)

| Description  | Part Number  |
|--|--------------|
| Micro-Fit BMI Dual Row Receptacle Housings         | <u>44133</u> |
| Micro-Fit BMI Right-Angle Dual Row PCB Receptacles | <u>44764</u> |
| Micro-Fit BMI Vertical Dual Row PCB Receptacles    | <u>44769</u> |

---

This document was generated on Dec 16, 2025