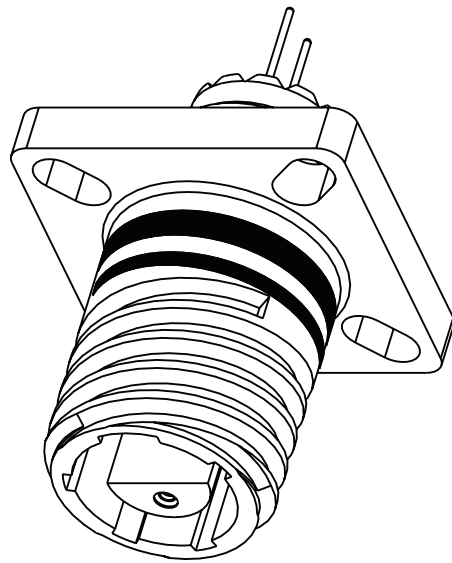
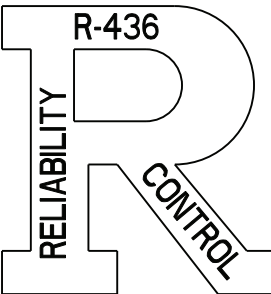
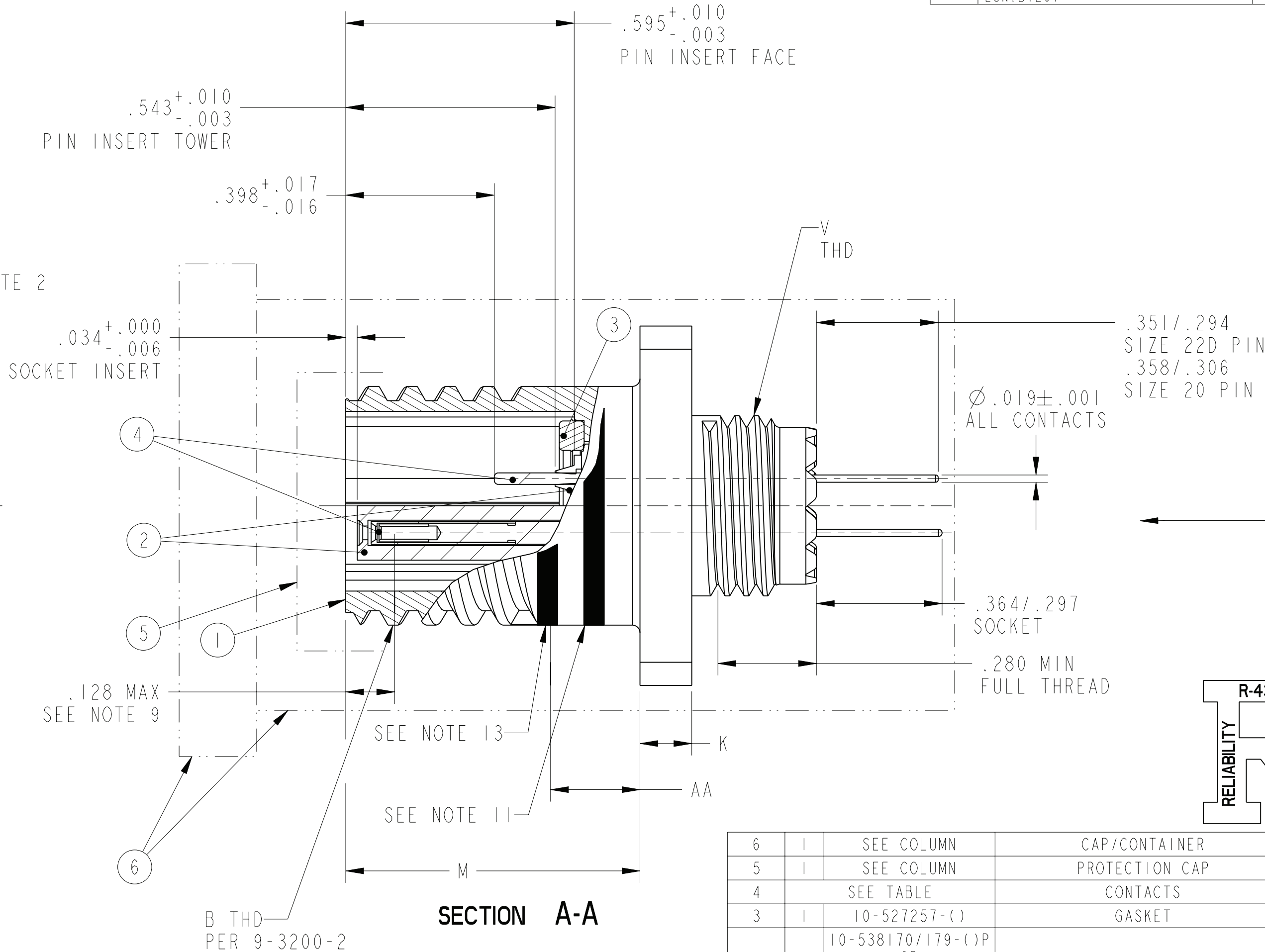
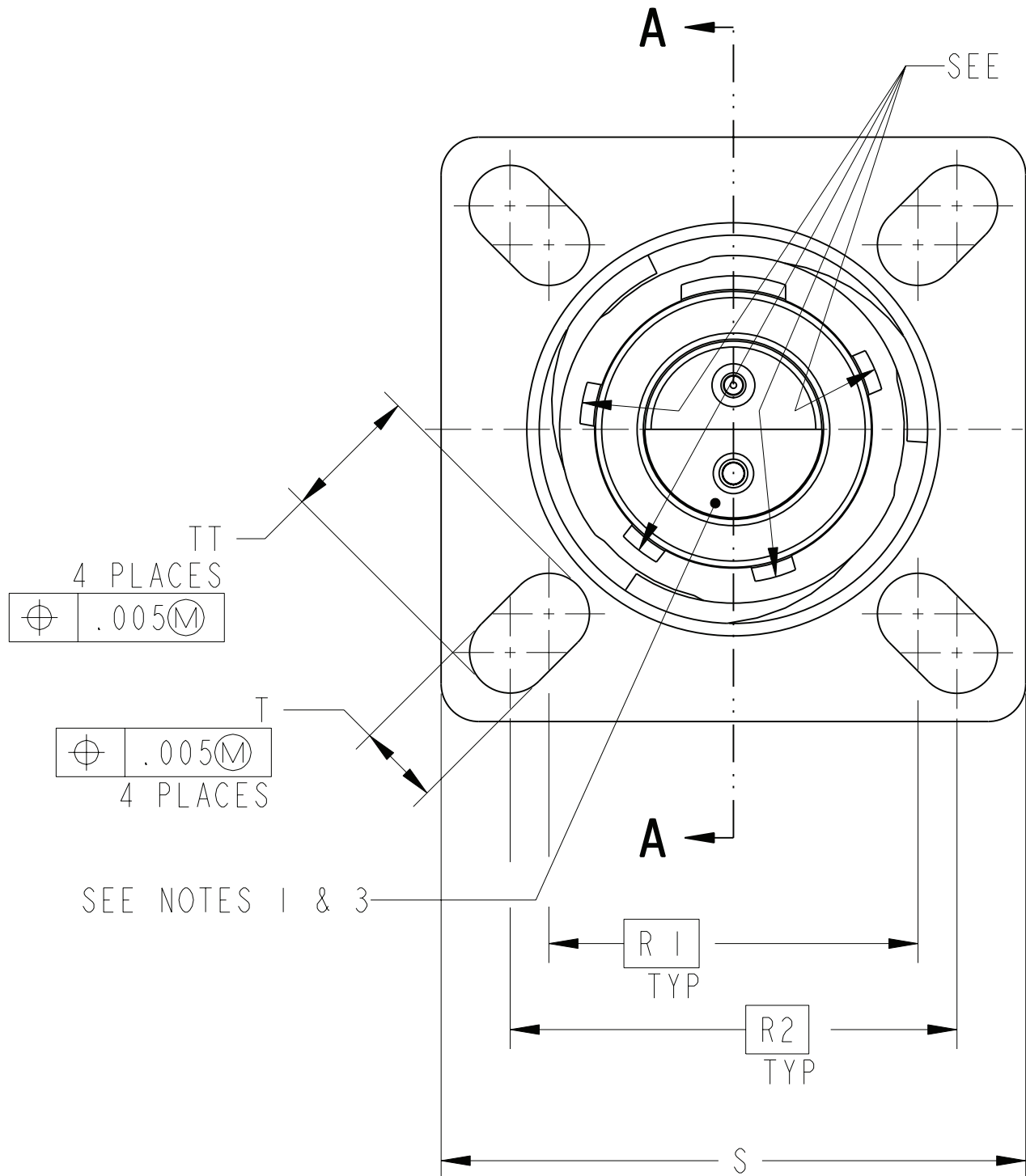


REV.	LTR	DESCRIPTION	DATE
B	A	INITIAL RELEASE	
B		(CL 11) ADDED CONTACT SIZE 20; ADDED TO DIMENSION FOR PIN ECN:B1267	V. JONES 8-18-11



SCALE 2



NOTES: SEE SHEET 2

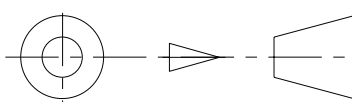
THE USE OF THIS DOCUMENT IS UNLIMITED. HOWEVER, DOCUMENTS REFERENCED HEREON MAY CONTAIN LIMITED RIGHTS DATA.

CONTACTS		
SIZE	PIN	SOCKET
22D	10-407552-015	10-497623-035
20	10-497640-205	-----

UNLESS OTHERWISE SPECIFIED	SPECIFICATIONS
LINEAR DIMENSIONS ARE IN INCHES TOLERANCES: .XXXX = ±.0005 ANGLES= ±2° .XXX = ±.010 .XX = ±.03 .X = ±.1 DIM. & TOL. PER ASME Y14.5M; DRM PER MIL-DTL-31000; OTHER Amphenol Sds. PER 9-3800 LEGENDS: = FLAG NOTE CALL OUT REFERENCE ONLY	MATERIAL SPEC. N/A PROCESS SPEC. SEE NOTE 7

6	I	SEE COLUMN	CAP/CONTAINER	
5	I	SEE COLUMN	PROTECTION CAP	
4	SEE TABLE		CONTACTS	
3	I	10-527257-()	GASKET	5
2	I	10-538170/179-()P OR 10-552440/449-()P OR 10-417306/350-()S OR 10-555407/429-()S	INSERT, PIN OR INSERT, SOCKET	
1	I	10-527244/249-()T	SHELL	5
POS	QTY	PART NUMBER	DESCRIPTION	NOTE

PARTS LIST				
APPROVALS		DATE	AMPHENOL CORPORATION 40-60 DELAWARE AVENUE SIDNEY, N.Y. 13838	
PREPARED BY D. ALGER		8-SEPT-09		
ENGINEER IN CHARGE D. FREAR				
DESIGN MANAGER E. SHEPLER				
DESIGN ACTIVITY GROUP MILAERO				
THIRD ANGLE PROJECTION			CONNECTOR, ELECTRICAL RECEPTACLE, TYPE CTVPS00RF-(), PCB CONTACT, ELECTROLESS NICKEL PLATE	

	SIZE C	CAGE CODE 77820	DOCUMENT NO. 91-660690/699	REV. B
SCALE: 4.0 REF: 91-577370/379			SHEET 1 OF 3	

PRO/ENGINEER INFORMATION	
N/A	Pro/e Model Used:
N/A	91-660690-699.ASSEM
Drawing Name:	
91-660690-699	

NEXT ASSEMBLY

STAMP "AMPHENOL", PART NUMBER, DATE CODE(9-3895)
AND LOT NUMBER PER 9-5788
SEE NOTE 12
EXAMPLE:

AMPHENOL 91-660692-35P 0937 09001000
FOR ROTATED KEYWAYS EXAMPLE:
AMPHENOL 91-660692-35G 0937 09001000

13. FULLY MATED INDICATOR BAND (COLOR RED).

12. SEE WORK ORDER FOR PERMISSIBLE ADDITIONAL OR ALTERNATE STAMPING.

11. BLUE BAND DENOTES REAR RELEASE CONTACT RETENTION SYSTEM.

10. UNITS MEET THE APPLICABLE REQUIREMENTS OF MIL-DTL-38999.

9. DISTANCE FROM END OF SHELL TO THE POINT AT WHICH A GAGE PIN, HAVING THE SAME BASIC DIAMETER AS THE MATING CONTACT AND A SQUARE FACE, ENGAGES SOCKET CONTACT SPRING.

8. FOR MATING CONNECTOR , SEE 91-527360/369 & OTHERS.

```

7. PROCESS SPEC:
    ASSY 9-5047-13
    TEST 9-5726
    SPECIAL CONTROL 9-6000-5
    PROCESS CONTROL 9-4796
    9-2437-25,9-5788,9-7543,
    9-3200-2,9-3895

```

6. PACKAGE PER PRODUCTION PROCESS SHEET.

5. SEE SEPARATE PARTS LIST FOR COMPONENT
PART NUMBERS AND QUANTITIES.

4. DRAWING ILLUSTRATES FINAL ASSEMBLY. FOR FINAL INSTALLATION, CONTACTS MUST BE ASSEMBLED INTO ALL INSERT HOLES. CONTACTS ARE SHIPPED ASSEMBLED INTO CONNECTOR.

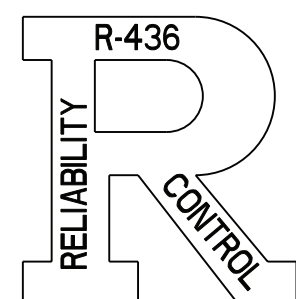
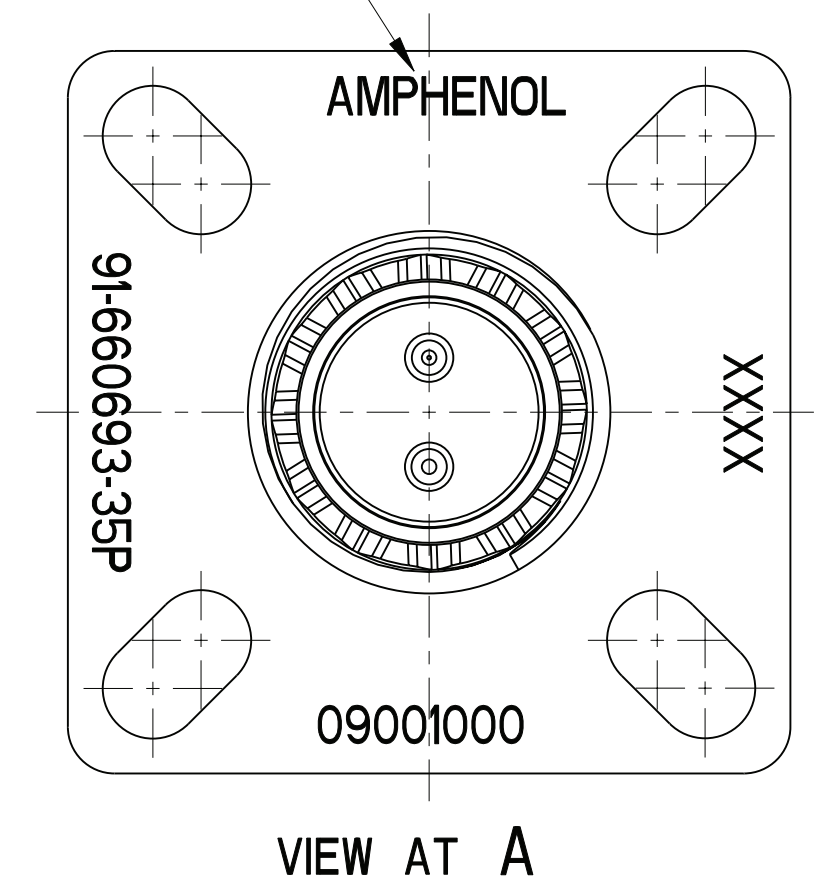
3. INSERT ASSEMBLY IS NOT REMOVABLE.

2. ALTERNATE ROTATIONS ARE OBTAINED BY ROTATING INDICATED KEYWAYS. SIX POSITIONS ARE AVAILABLE. SEE 9-2437-25.

I. FOR CONTACT ARRANGEMENT PATTERN, SEE DRAWINGS L-15206-35 THRU L-15225-35. ALTERNATE POSITIONS THEREON DO NOT APPLY.

NOTES:

THE USE OF THIS DOCUMENT IS UNLIMITED.
HOWEVER, DOCUMENTS REFERENCED HEREON
MAY CONTAIN LIMITED RIGHTS DATA.



SIZE C	CAGE CODE 77820	DOCUMENT NO. 91-660690/699	REV. B
SCALE: 4.0	REF. 91-577370/379	SHEET 2 OF 3	

DOCUMENT NO. 91-660690/699	SHEET 2 OF 3	REV. B
--------------------------------------	--------------	------------------

ASSEMBLY NUMBER	CTVPS NUMBER	B THREAD (PLATED) PER 9-3200-2 CLASS 2A	K +.003 -.002	M ±.0025	-R2-	-R1-	S +.006 -.005	T +.008 -.006	TT +.008 -.006	V THREAD (PLATED) PER 9-7543	AA MAX PANEL THICKNESS
91-660690-()	00RF- 7-()	NOT AVAILABLE									
91-660691-()	00RF- 9-()	.6250-0.1P-0.3L-TS	.140	.7702	.719	.594	.942	.128	.216	M12X1-6g 0.100R	.234
91-660692-()	00RF-11-()	.7500-0.1P-0.3L-TS			.812	.719	1.037		.194	M15X1-6g 0.100R	
91-660693-()	00RF-13-()	.8750-0.1P-0.3L-TS			.906	.812	1.131			M18X1-6g 0.100R	
91-660694-()	00RF-15-()	1.0000-0.1P-0.3L-TS			.969	.906	1.226		.173	M22X1-6g 0.100R	
91-660695-()	00RF-17-()	1.1875-0.1P-0.3L-TS			1.062	.969	1.316		.194	M25X1-6g 0.100R	
91-660696-()	00RF-19-()	1.2500-0.1P-0.3L-TS			1.156	1.062	1.442			M28X1-6g 0.100R	
91-660697-()	00RF-21-()	1.3750-0.1P-0.3L-TS	.168	.7387	1.250	1.156	1.568	.154	.242	M31X1-6g 0.100R	.204
91-660698-()	00RF-23-()	1.5000-0.1P-0.3L-TS			1.375	1.250	1.694			M34X1-6g 0.100R	
91-660699-()	00RF-25-()	1.6250-0.1P-0.3L-TS			1.500	1.375	1.816			M37X1-6g 0.100R	

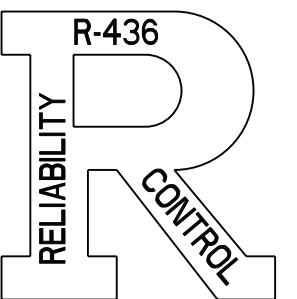
TO COMPLETE, ADD INSERT
ARRANGEMENT SUFFIX
PER 9-2437-25

ASSEMBLY NUMBER	PROTECTION CAP (FRONT)	CAP/CONTAINER
91-660690-()	NOT AVAILABLE	
91-660691-()	10-70500-010	10-576238-001 10-576237-001
91-660692-()	10-70500-012	
91-660693-()	10-70500-014	
91-660694-()	10-70500-016	
91-660695-()	10-70500-019	
91-660696-()	10-70500-020	
91-660697-()	10-70500-022	
91-660698-()	10-70500-024	
91-660699-()	10-70524-001	10-576238-002 10-576237-002

—TO COMPLETE, ADD INSERT
ARRANGEMENT SUFFIX
PER 9-2437-25

NOTES: SEE SHEET 2

THE USE OF THIS DOCUMENT IS UNLIMITED.
HOWEVER, DOCUMENTS REFERENCED HEREON
MAY CONTAIN LIMITED RIGHTS DATA.



SIZE C	CAGE CODE 77820	DOCUMENT NO. 91-660690/699	REV. B
SCALE: 4.0		REF. 91-577370/379	SHEET 3 OF 3