

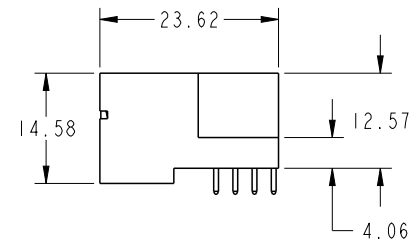
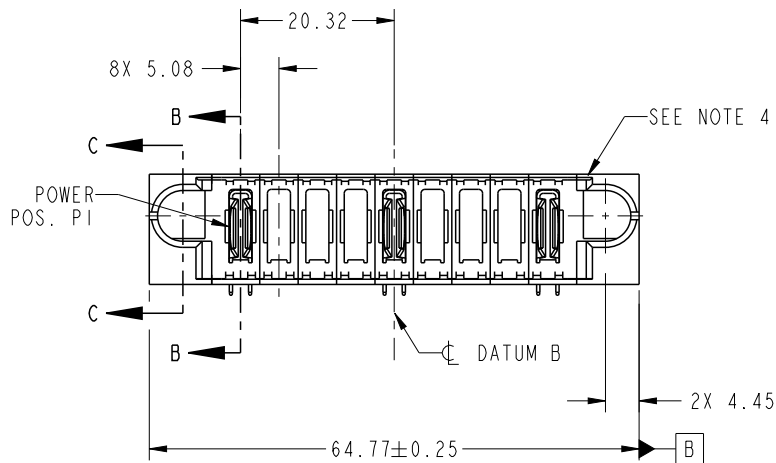
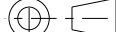







Copyright FCI.

PRODUCT NO.	POWER										E2
	E1	P1	P2	P3	P4	P5	P6	P7	P8	P9	
51939-706-- NOTE 3		<div>PA</div>	<div>X</div>	<div>X</div>	<div>X</div>	<div>PA</div>	<div>X</div>	<div>X</div>	<div>X</div>	<div>PA</div>	

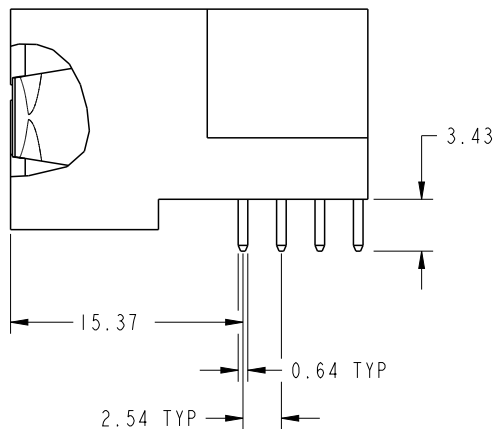


spec ref		*		dr		Luo Weller	2012/09/13	projection 	MM 	size	A4	scale	1:1
tolerance std		TOLERANCES UNLESS OTHERWISE SPECIFIED		eng		Luo Weller	2012/10/09			ecn no	-		
SEE NOTE				chr		-	-			rel level			
				appr		Pei-Ming Zheng	2012/10/10	product family		PwrBlade			
surface 	linear	0.X	±0.5		title 9P RIGHT ANGLE SOLDER HEADER				dwg no	51939-706		rev A	
		0.XX	±0.25										
		0.XXX	±0.1										
	angular	0°	±2°	www.fci.com	cat. no.		-	Product - Customer Drw		sheet 1 of 4			

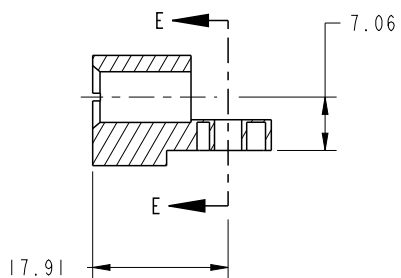
PrintE File - REV C - 2009-06-09

PRODUCT NUMBER

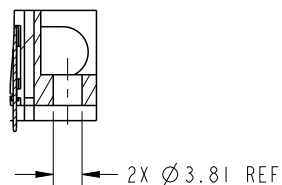
51939-706--  
NOTE: 3



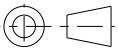


SECTION B-B  
SCALE 2:1



SECTION C-C



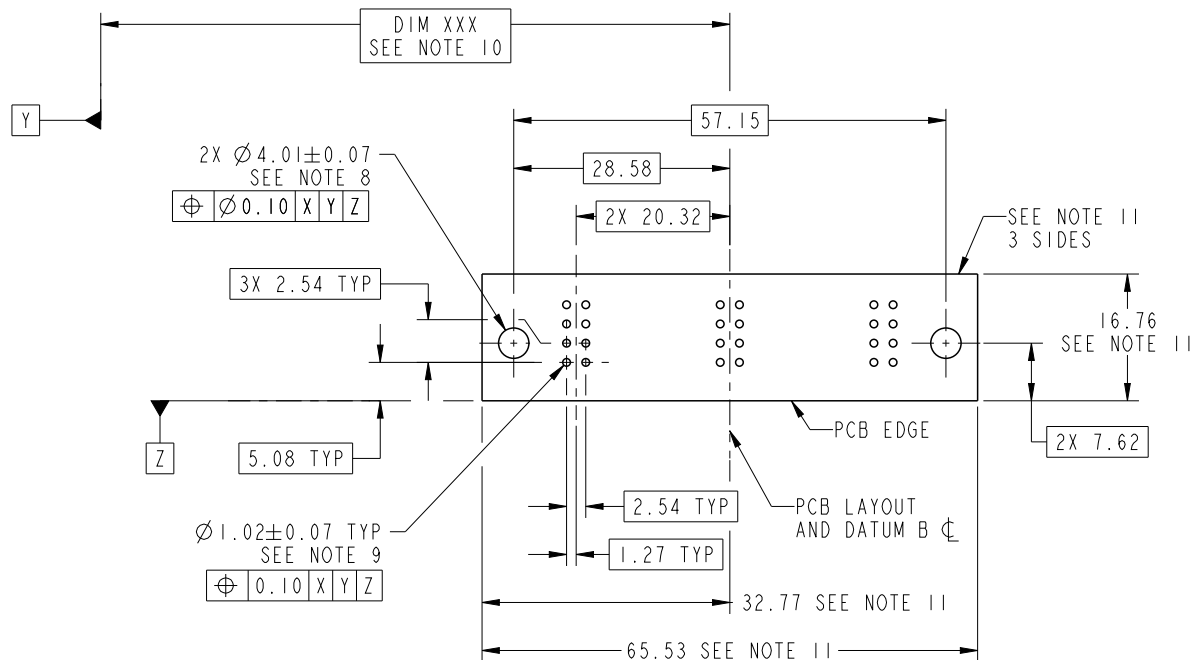
PARTIAL SECTION E-E

dr	Luo Weller	2012/09/13	<div>projection</div> <div></div>	<div>MM</div> <div></div>	size	A4	scale	1:1	
eng	Luo Weller	2012/10/09			ecn no	-			
chr	-	-							
appr	Pei-Ming Zheng	2012/10/10	product family		PwrBlade	rel level	Released		
	title				9P	dwg no		rev	
					RIGHT ANGLE SOLDER HEADER	51939-706		A	
www.fci.com	cat. no.		-	Product - Customer Drw			sheet 2 of 4		

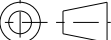


PrintE File - REV C - 2009-06-09

PRODUCT NUMBER

51939-706--  
NOTE: 3



RECOMMENDED PCB LAYOUT

dr	Luo Weller	2012/09/13	<div>projection</div> <div></div>	<div>MM</div> <div></div>	size	A4	scale	1:1		
eng	Luo Weller	2012/10/09			ecn no -					
chr	-	-								
appr	Pei-Ming Zheng	2012/10/10	product family		PwrBlade	rel level			Released	
		title			9P	dwg no			51939-706	rev
					RIGHT ANGLE SOLDER HEADER			A		
www.fci.com		cat. no.		-	Product - Customer Drw				sheet 3 of 4	



Copyright FCI.

PRODUCT NUMBER  
51939-706--  
NOTE: 3

NOTES:

1. DIMENSIONS AND TOLERANCES ARE IN ACCORDANCE WITH  
ASME Y14.5M, 1994 UNLESS OTHERWISE SPECIFIED.

CONNECTOR NOTES:

- 2. HOUSING MATERIAL: UL 94 V-0 GLASS FILLED HIGH-TEMP THERMOPLASTIC  
POWER CONTACT MATERIAL: COPPER ALLOY  
SIGNAL PIN MATERIAL: COPPER ALLOY
  - 3. SEE ITEM 1 & 2 IN PRINT 10064183 FOR PLATING SPEC OF 51939-706 AND 51939-706LF RESPECTIVELY.
  - 4. MANUFACTURER'S NAME, DATE CODE AND OPTIONAL P/N TO APPEAR ON  
THIS SURFACE. THE P/N CAN BE OMITTED IF THERE IS NOT ENOUGH  
SPACE ON THIS SURFACE.
  - 5. PRODUCT SPECIFICATION GS-12-149.  
APPLICATION SPECIFICATION BUS-20-067.
  - 6. PACKAGED IN TRAYS.
- PCB NOTES:
- 7. ALL HOLE DIAMETERS ARE FINISHED HOLE SIZE.
  - 8. MOUNTING HOLES, WHERE APPLICABLE, ARE UNPLATED.
  - 9.  $\varnothing 1.151 \pm 0.025$  DRILLED HOLES PLATED WITH  
0.008 MIN SnPb OR Sn OVER 0.03  
TO 0.08 Cu PLATING TO ACHIEVE  
 $\varnothing 1.02 \pm 0.07$  HOLE.
  - 10. "DIM XXX" TO BE DETERMINED BY THE CUSTOMER.
  - 11. CONNECTOR KEEP-OUT ZONE.

dr	Luo Weller	2012/09/13	<div>projection</div> <div></div>	<div>MM</div> <div></div>	size	A4	scale	1:1			
eng	Luo Weller	2012/10/09			ecn no -						
chr	-	-									
appr	Pei-Ming Zheng	2012/10/10	product family		PwrBlade		rel level		Released		
<div></div>	title				9P		dwg no		51939-706		rev
			RIGHT ANGLE SOLDER HEADER								
www.fci.com		cat. no.		-		Product - Customer Drw				sheet 4 of 4	