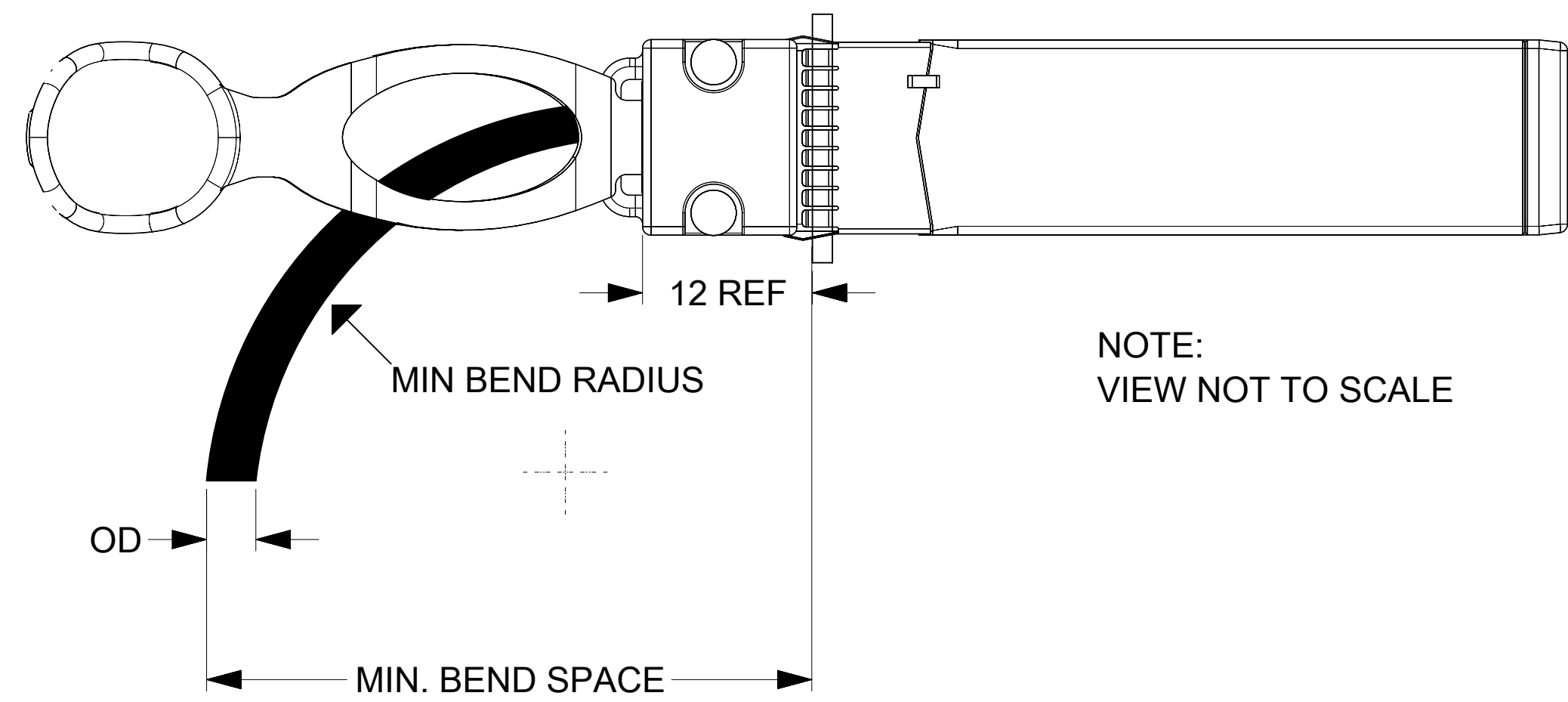


- NOTES:
1. CABLE LENGTH DEPENDS ON WIRE GAUGE, DATA RATE, AND HOST BOARD DRIVER CAPABILITIES
  2. MATERIALS:  
BACKSHELLS - ZINC DIE CAST WITH BRIGHT NICKEL PLATING  
DELATCH - STAINLESS STEEL WITH OVERMOLDED NYLON  
RIVETS - STAINLESS STEEL
  3. IMPEDANCE - 100 OHMS DIFFERENTIAL
  4. CABLE IS UL RECOGNIZED (TBD)
  5. EEPROM MAP AVAILABLE UPON REQUEST
  6. RoHS COMPLIANT, NO EXEMPTIONS
  7. THE DIRECTIONS OF SFF-DD ENDS PROBABLY ARE NOT SAME AS THE DRAWING SHOWN. THERE ARE A SLIGHT ROLLING OVER RELATIVE TO QSFP-DD END. IT IS ACCEPTABLE .

PLACE ACETATE TAPE UNDER THE P1 LABEL (LABEL SHOULD BE CENTERED OVER TAPE)

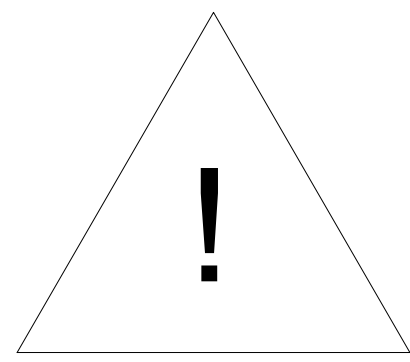
FUNCTIONAL SYMBOLS FA = 0 FC = 0 FD = 0	THIS DRAWING CONTAINS INFORMATION THAT IS PROPRIETARY TO MOLEX ELECTRONIC TECHNOLOGIES, LLC AND SHOULD NOT BE USED WITHOUT WRITTEN PERMISSION		CURRENT REV DESC: SHEET 4: "P1" REMOVED FROM ZONE F11.	
	DIMENSION UNITS	SCALE	EC NO: 712800	
	mm	1:1	DRWN: CHETAB3	2022/07/01
	GENERAL TOLERANCES (UNLESS SPECIFIED)		CHK'D: ADITHK	2022/07/01
DIVISIONAL SYMBOLS	ANGULAR TOL ± 5.0°		APPR: SCHANNARAYAN	2022/07/04
	4 PLACES	± 0.0	INITIAL REVISION:	
	3 PLACES	± 0.0	DRWN: ZDANDURAND	2018/02/27
	2 PLACES	± 0.13	APPR: ADTUCKER	2018/03/26
1 PLACE ± 0.25		DRAFT WHERE APPLICABLE MUST REMAIN WITHIN DIMENSIONS		
0 PLACES ± 0.0		THIRD ANGLE PROJECTION	DRAWING	SERIES
			D-SIZE	207112
DOCUMENT NUMBER		DOC TYPE	DOC PART	REVISION
2071121000		PSD	000	F
MATERIAL NUMBER		CUSTOMER		SHEET NUMBER
SEE P/N TABLE		GENERAL MARKET		1 OF 4

### SFP-DD CABLE BEND RADIUS



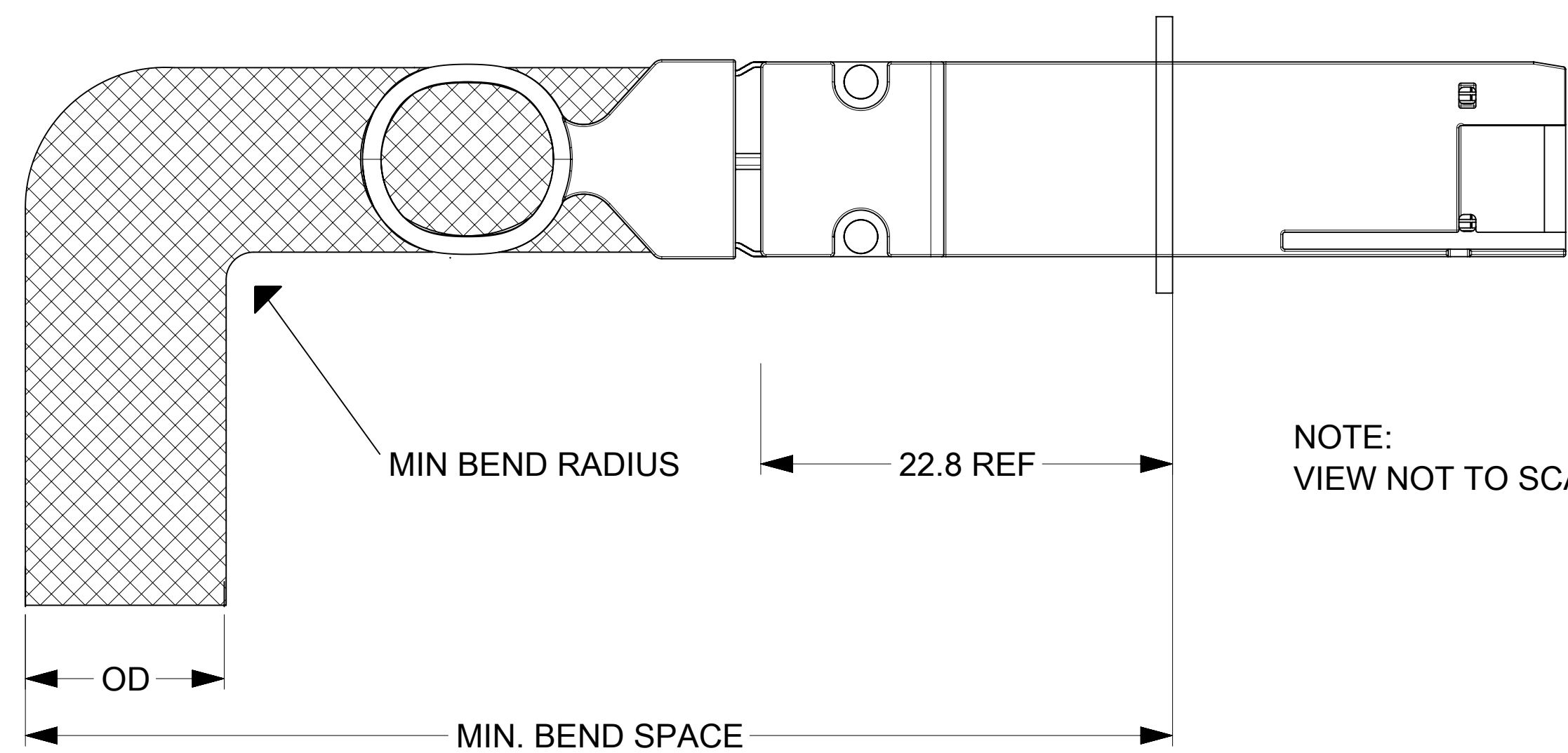
NOTE:  
VIEW NOT TO SCALE

CABLE AWG	O.D.	MIN BEND RADIUS (mm)	MIN BEND SPACE (mm)
30	5.89	30	48
28	6.48	33	51
26	6.8	34	53



MINIMUM BEND RADII PENDING QUALIFICATION. NUMBERS ABOVE AND BELOW ARE ESTIMATES AND SUBJECT TO CHANGE.

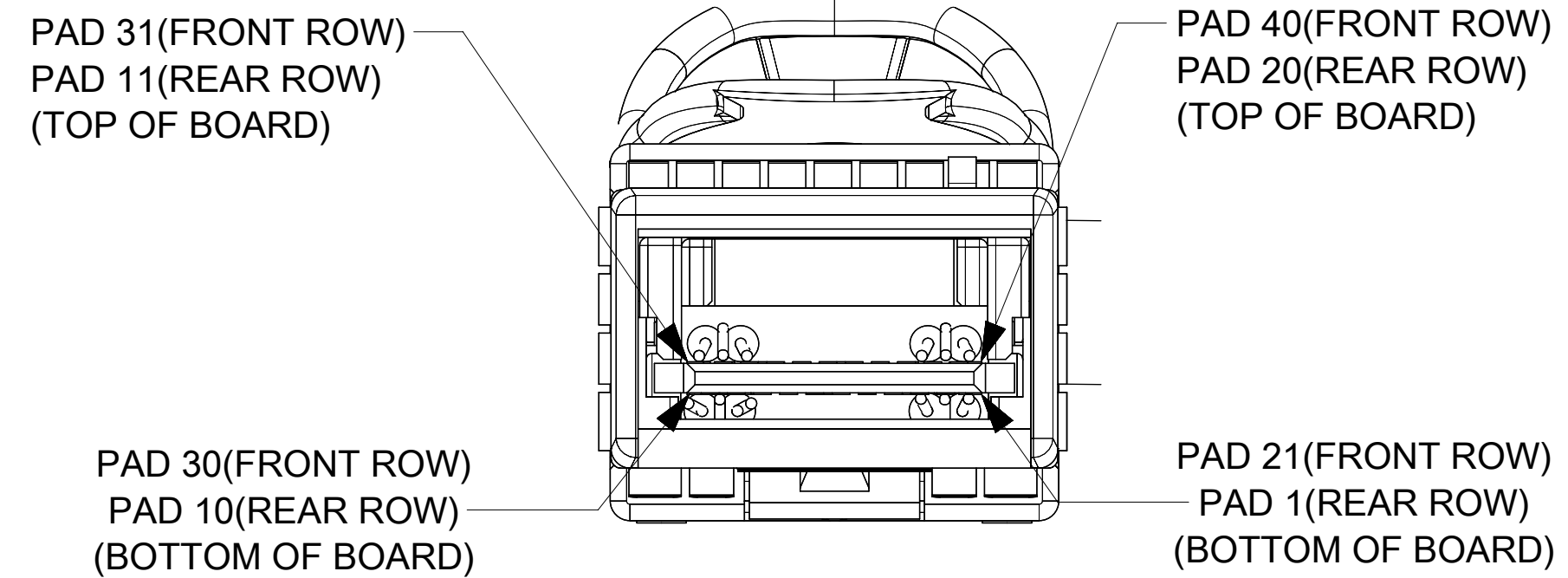
### QSFP-DD CABLE BEND RADIUS



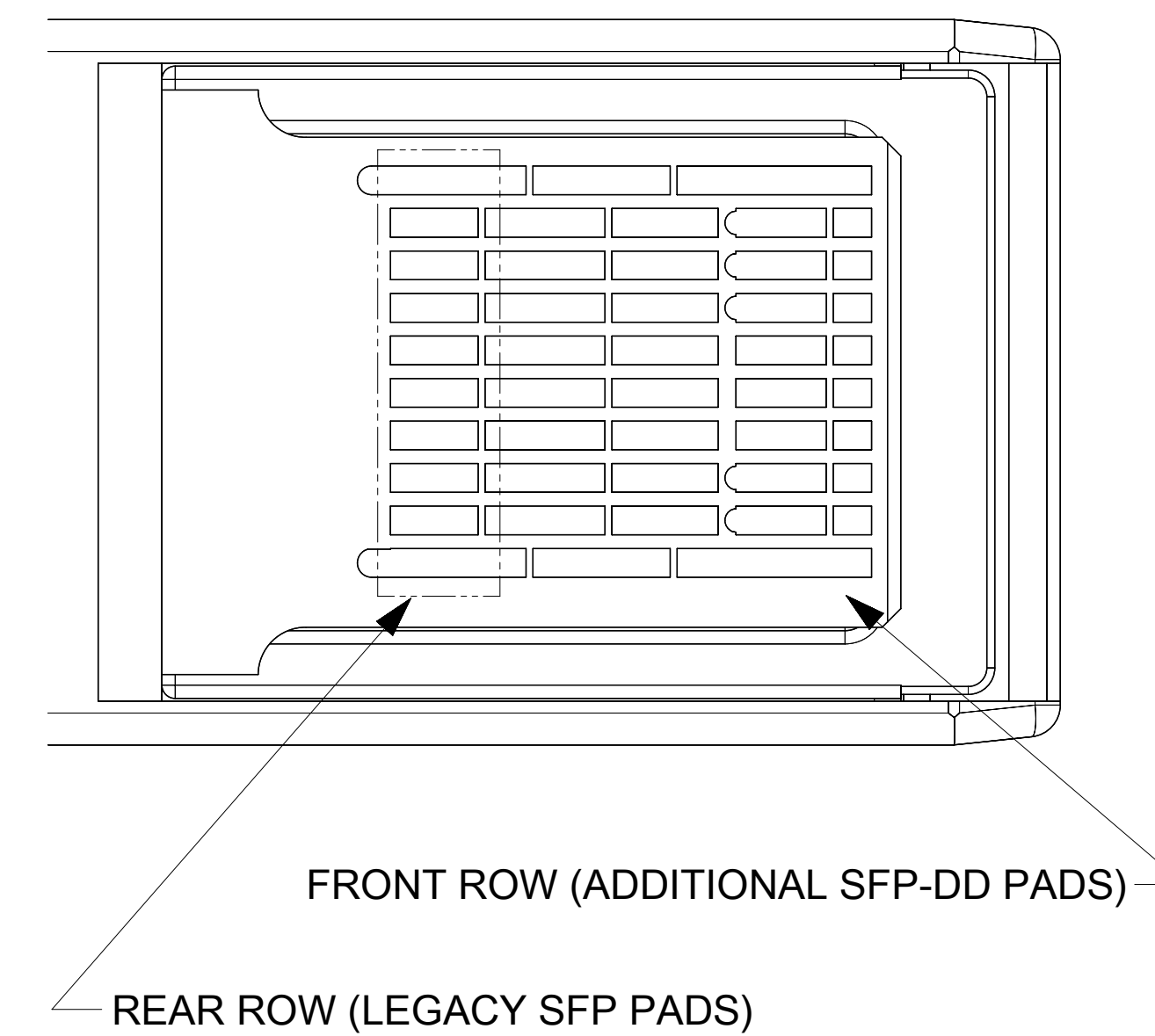
NOTE:  
VIEW NOT TO SCALE

CABLE AWG	OD (mm)	MIN BEND RADIUS (mm)	MIN BEND SPACE (mm)
30	(9.4)	(47)	(79)
28	(11)	(55)	(89)
26	(13)	(65)	(101)

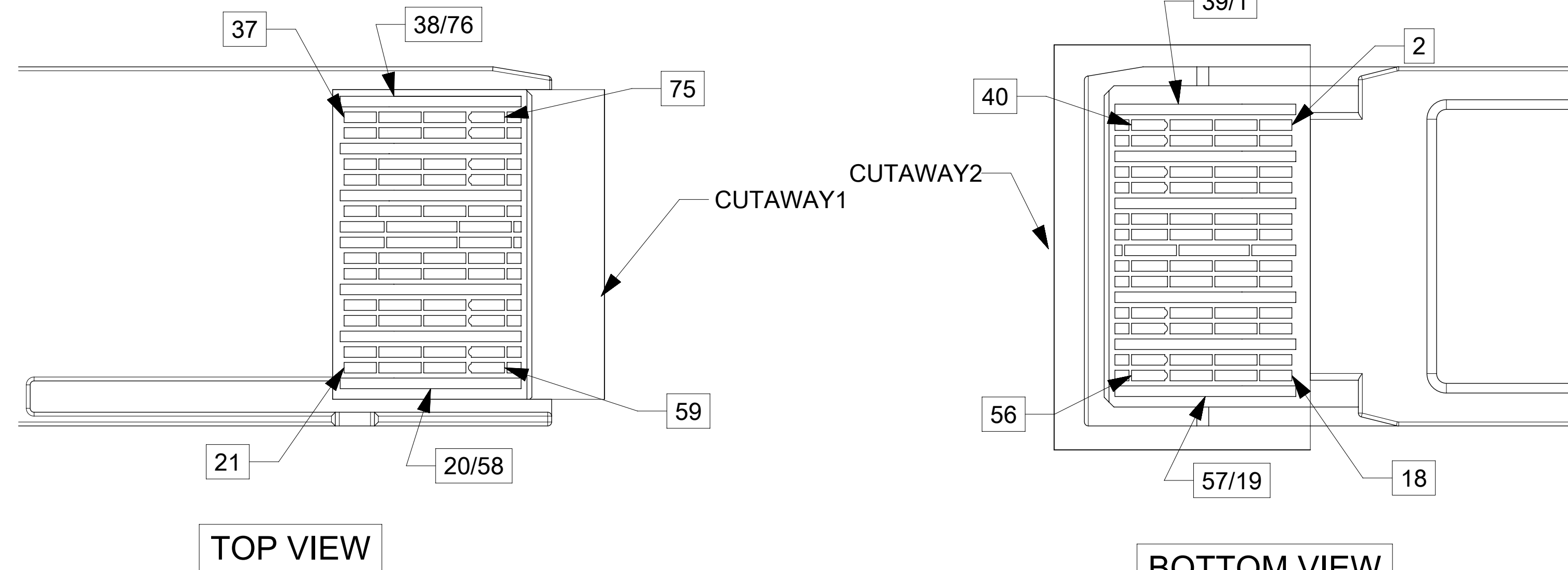
### SFP-DD PADS



### BOTTOM VIEW



### QSFP-DD PADS



<b>FUNCTIONAL SYMBOLS</b> $\nabla_A = 0$ $\nabla_C = 0$ $\nabla_P = 0$	DIMENSION UNITS: <b>mm</b> SCALE: <b>1:1</b>	THIS DRAWING CONTAINS INFORMATION THAT IS PROPRIETARY TO MOLEX ELECTRONIC TECHNOLOGIES, LLC AND SHOULD NOT BE USED WITHOUT WRITTEN PERMISSION FROM ZONE F11.	
	GENERAL TOLERANCES (UNLESS SPECIFIED)		EC NO: 712800 DRWN: CHETAB3 2022/07/01 CHK'D: ADITHK 2022/07/01 APPR: SCHANNARAYAN 2022/07/04
	ANGULAR TOL $\pm 5.0^\circ$		
	4 PLACES $\pm 0.0$ 3 PLACES $\pm 0.0$ 2 PLACES $\pm 0.13$ 1 PLACE $\pm 0.25$ 0 PLACES $\pm 0.0$		
<b>DIVISIONAL SYMBOLS</b>	DRAFT WHERE APPLICABLE MUST REMAIN WITHIN DIMENSIONS		CURRENT REV DESC: SHEET 4: "P1" REMOVED FROM ZONE F11.  INITIAL REVISION: DRWN: ZDANDURAND 2018/02/27 APPR: ADTUCKER 2018/03/26
DOCUMENT NUMBER: <b>2071121000</b>		DOC TYPE: PSD DOC PART: 000 REVISION: F	PRODUCT CUSTOMER DRAWING
D-DRAWING: <b>D-SIZE</b>		SERIES: <b>207112</b>	MATERIAL NUMBER: SEE P/N TABLE CUSTOMER: GENERAL MARKET SHEET NUMBER: 2 OF 4

WIRING DIAGRAM				
QSFP-DD END			SFP-DD END	
Pad	Signal		Pad	Signal
35	GND	----		GND
36	TX1p	--->	13	RD+
37	TX1n	--->	12	RD-
16	GND	----		GND
17	RX1p	<---	18	TD+
18	RX1n	<---	19	TD-
1	GND	----		GND
2	TX2n	--->	32	RD1-
3	TX2p	--->	33	RD1+
20	GND	----		GND
21	RX2n	<---	39	TD1-
22	RX2p	<---	38	TD1+
32	GND	----		GND
33	TX3p	--->	13	RD+
34	TX3n	--->	12	RD-
13	GND	----		GND
14	RX3p	<---	18	TD+
15	RX3n	<---	19	TD-
4	GND	----		GND
5	TX4n	--->	32	RD1-
6	TX4p	--->	33	RD1+
23	GND	----		GND
24	RX4n	<---	39	TD1-
25	RX4p	<---	38	TD1+
7	GND	----		GND
19	GND	----		GND
26	GND	----		GND
38	GND	----		GND

P2

P3

WIRING DIAGRAM				
QSFP-DD END			SFP-DD END	
Pad	Signal		Pad	Signal
73	GND	----		GND
74	TX5p	--->	13	RD+
75	TX5n	--->	12	RD-
54	GND	----		GND
55	RX5p	<---	18	TD+
56	RX5n	<---	19	TD-
39	GND	----		GND
40	TX6n	--->	32	RD1-
41	TX6p	--->	33	RD1+
58	GND	----		GND
59	RX6n	<---	39	TD1-
60	RX6p	<---	38	TD1+
70	GND	----		GND
71	TX7p	--->	13	RD+
72	TX7n	--->	12	RD-
51	GND	----		GND
52	RX7p	<---	18	TD+
53	RX7n	<---	19	TD-
42	GND	----		GND
43	TX8n	--->	32	RD1-
44	TX8p	--->	33	RD1+
61	GND	----		GND
62	RX8n	<---	39	TD1-
63	RX8p	<---	38	TD1+
45	GND	----		GND
57	GND	----		GND
64	GND	----		GND
76	GND	----		GND

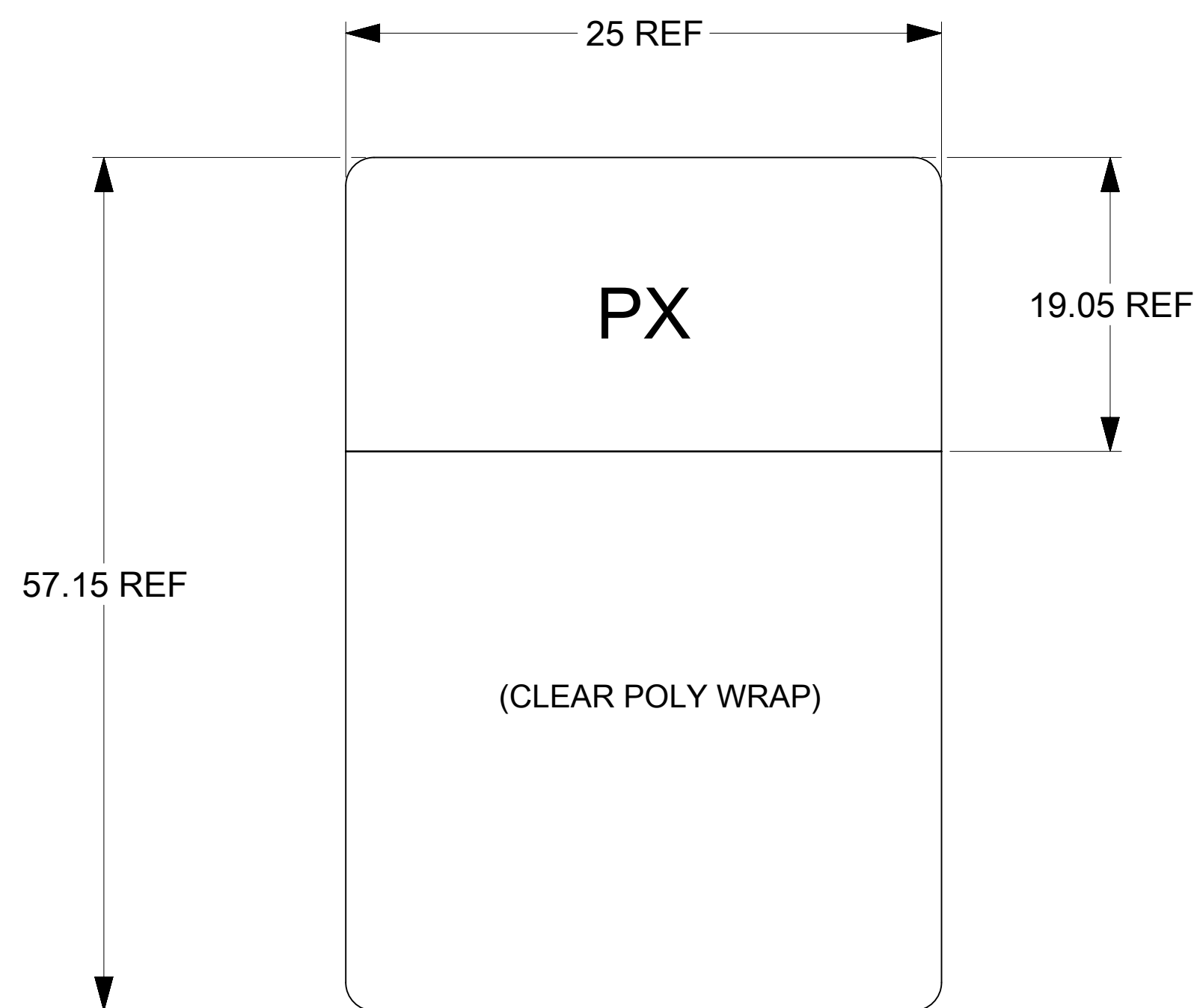
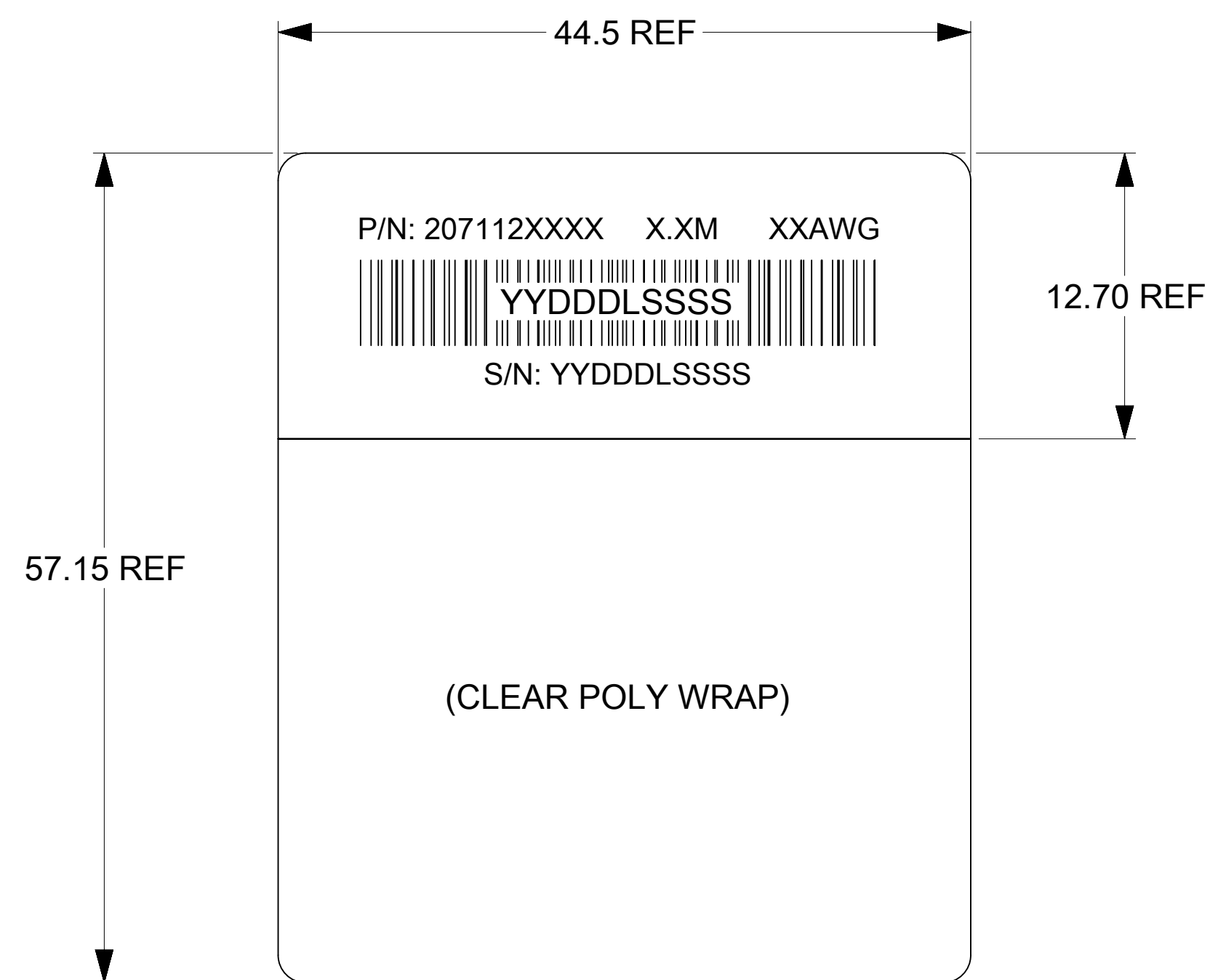
P4

P5

<b>FUNCTIONAL SYMBOLS</b> FA = 0 FC = 0 FP = 0 <b>DIVISIONAL SYMBOLS</b>	THIS DRAWING CONTAINS INFORMATION THAT IS PROPRIETARY TO MOLEX ELECTRONIC TECHNOLOGIES, LLC AND SHOULD NOT BE USED WITHOUT WRITTEN PERMISSION FROM ZONE F11.		<b>molex</b>  QSFP-DD TO (4)SFP-DD 56G CABLE ASY				
	<b>FUNCTIONAL DIMENSION UNITS</b> mm	<b>SCALE</b> 1:1			CURRENT REV DESC: SHEET 4: "P1" REMOVED FROM ZONE F11.		
	<b>GENERAL TOLERANCES (UNLESS SPECIFIED)</b> ANGULAR TOL ± 5.0°		EC NO: 712800 DRWN: CHETAB3 2022/07/01 CHK'D: ADITHK 2022/07/01 APPR: SCHANNARAYAN 2022/07/04		PRODUCT CUSTOMER DRAWING		
	4 PLACES ± 0.0 3 PLACES ± 0.0 2 PLACES ± 0.13 1 PLACE ± 0.25 0 PLACES ± 0.0		INITIAL REVISION: DRWN: ZDANDURAND 2018/02/27 APPR: ADTUCKER 2018/03/26		DOCUMENT NUMBER <b>2071121000</b>	DOC TYPE PSD	DOC PART 000
DRAFT WHERE APPLICABLE MUST REMAIN WITHIN DIMENSIONS		THIRD ANGLE PROJECTION 	DRAWING <b>D-SIZE</b>	SERIES <b>207112</b>	MATERIAL NUMBER SEE P/N TABLE	CUSTOMER GENERAL MARKET	SHEET NUMBER 3 OF 4

**LABEL DETAIL**

**LEG ID LABEL**



MOLEX P/N	LENGTH (M)	AWG
2071121005	0.5M +/- 0.05M	30
2071121010	1.0M +/- 0.05M	30
2071121015	1.5M +/- 0.08M	30
2071123005	0.5M +/- 0.05M	28
2071123010	1.0M +/- 0.05M	28
2071123015	1.5M +/- 0.08M	28
2071123020	2.0M +/- 0.08M	28
2071123025	2.5M +/- 0.08M	28
2071123030	3.0M +/- 0.08M	26

P/N: 207112XXXX - MOLEX PART NUMBER (SEE P/N TABLE)

PX: P2, P3, P4, P5

X.XM - CABLE LENGTH IN METERS (EXAMPLES - 0.5M, 1.0M, 1.5M)

XXAWG - CABLE SIZE IN AWG

S/N: YYDDDLSSSS - SERIAL NUMBER  
 YY = YEAR, THE LAST 2 DIGITS OF YEAR  
 DDD = DAY OF THE YEAR  
 L = LOCATION  
 1 - USA  
 2 - MEXICO  
 3 - CHINA  
 4 - PHILIPPINES  
 SSSS = SERIAL NUMBER (0001-9999)

**! TENTATIVE PROPOSAL  
 PENDING ELECTRICAL QUALIFICATION**

FUNCTIONAL SYMBOLS FA = 0 FC = 0 FP = 0 DIVISIONAL SYMBOLS	THIS DRAWING CONTAINS INFORMATION THAT IS PROPRIETARY TO MOLEX ELECTRONIC TECHNOLOGIES, LLC AND SHOULD NOT BE USED WITHOUT WRITTEN PERMISSION FROM ZONE F11.										
	DIMENSION UNITS	SCALE	CURRENT REV DESC: SHEET 4: "P1" REMOVED FROM ZONE F11.								
	mm	1:1									
	GENERAL TOLERANCES (UNLESS SPECIFIED)										EC NO: 712800 DRWN: CHETAB3 2022/07/01 CHK'D: ADITHK 2022/07/01 APPR: SCHANNARAYAN 2022/07/04 INITIAL REVISION: DRWN: ZDANDURAND 2018/02/27 APPR: ADTUCKER 2018/03/26
ANGULAR TOL ± 5.0°											
4 PLACES ± 0.0											
3 PLACES ± 0.0											
2 PLACES ± 0.13										PRODUCT CUSTOMER DRAWING DOCUMENT NUMBER: 2071121000 DOC TYPE: PSD DOC PART: 000 REVISION: F	
1 PLACE ± 0.25											
0 PLACES ± 0.0										MATERIAL NUMBER: SEE P/N TABLE CUSTOMER: GENERAL MARKET SHEET NUMBER: 4 OF 4	
DRAFT WHERE APPLICABLE MUST REMAIN WITHIN DIMENSIONS											
THIRD ANGLE PROJECTION			DRAWING: D-SIZE		SERIES: 207112						