

PRODUCT NUMBER
10042626-Y07GLF

RoHS COMPATIBLE, SEE NOTE 5

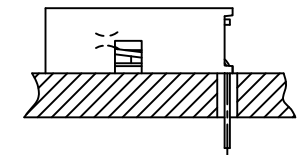
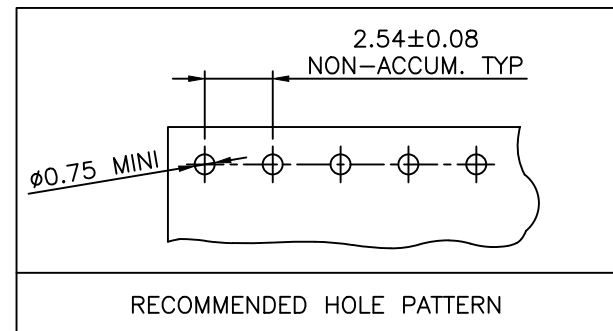
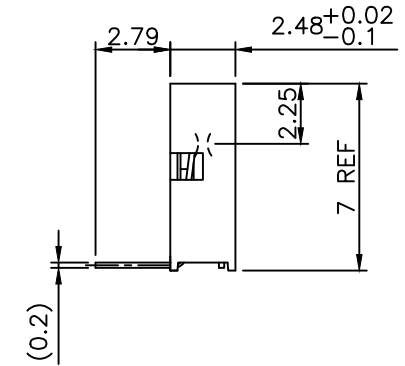
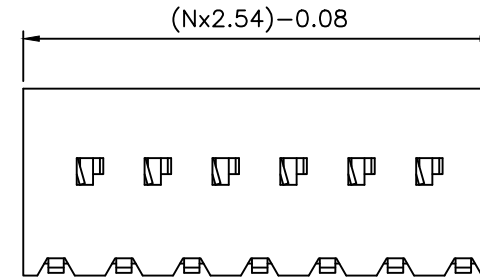
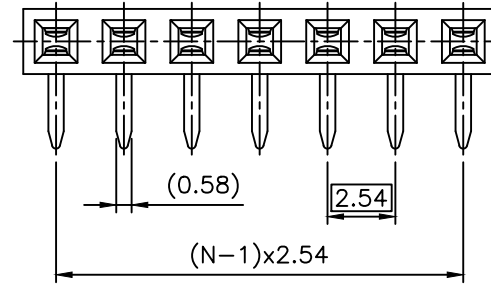
PLATING CODE

3= 0.76µm GOLD ON CONTACT AREA.

2µm MIN MATTE TIN ON TAIL.

4= 2µm MIN MATTE TIN FULL PLATED

1.27µm Ni MIN UNDERPLATING



NOTES:

- 1 - HOUSING MATERIAL: THERMOPLASTIC GLASS FILLED FLAME RETARDANT PER UL 94 V-0
HIGH TEMPERATURE: COLOR BLACK.
- 2 - TERMINAL MATERIAL: PHOSPHOR BRONZE.
- 3 - PACKED IN PLASTIC TUBE.
- 4 - TO DETERMINE DIMENSIONS:
N = NUMBER OF POSITIONS
EXAMPLE: 8 POS: (Nx2.54)-0.08=20.24 mm
- 5 - RoHS COMPATIBLE PRODUCT SPECIFICATIONS
 - a - PLATING:
- "LF" MEANS THE PRODUCT IS LEAD-FREE,
2µm MINIMUM MATTE TIN OVER 1.27µm
MINIMUM NICKEL UNDERPLATE.
 - b - MANUFACTURING PROCESS COMPATIBILITY
- THE HOUSING WILL WITHSTAND EXPOSURE TO
260°C ±5°C SOLDER BATH TEMPERATURE FOR
5 SECONDS IN A WAVE SOLDER APPLICATION
WITH A 1.6mm MIN THICK CIRCUIT BOARD.
 - c - LABELING:
- MEETS PACKAGING SPECS AS PER GS-14-920
 - d - LEGAL STATEMENT: SEE GS-47-0004
- 6 - THIS PART SERIES IS NOT INITIALLY INTENDED FOR
AUTOMOTIVE APPLICATIONS. ADDITIONAL FEES ARE
CHARGEABLE FOR ANY ADDITIONAL QUALIFICATION AND
TEST REPORTS PERFORMED OUTSIDE THE SCOPE OF THE
STANDARD PRODUCT SPECIFICATIONS.
- 7 - UNLESS OTHERWISE APPROVED BY AMPHENOL, ALL PARTS
AND COMPONENTS ARE DESIGNED & BUILT ACCORDING TO
AMPHENOL'S SPECIFICATIONS WHICH ARE SUBJECT TO
CHANGE WITHOUT NOTICE.

mat'l. code				surface		tolerance		projection		product family	
SEE NOTES				ISO 1302 ✓		ISO 406 ISO 1101		DUBOX		DUBOX	
ltr	ecn no	dr	date	tolerances unless otherwise specified		±0.3		mm		title	
A	F04-0386	DLE	04.12.17	angles	linear					BtB RECEIPT.	
B	F06-0150	DLE	06.03.17							HORIZ SR TMT RA	
C	F06-0204	DLE	06.06.29	±2'				scale 5:1		dwg no	
D	F07-0164	DLE	07.03.29	dr	D.LEGRAND	04.12.17				sheet 1 of 1	
E	B-19123	LMU	14.10.21	engr	P.NIZZI	04.12.17				size	
F	F-23040	AMA	16.01.14	chr	D.LEGRAND	04.12.17				10042626	
G	F-59349	DDE	26.02.05	appd	P.NIZZI	04.12.17				A3	
sheet		revision								type	
index		sheet								CUSTOMER Drawing	