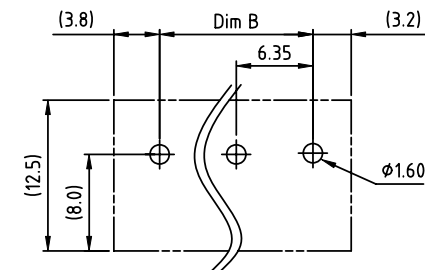
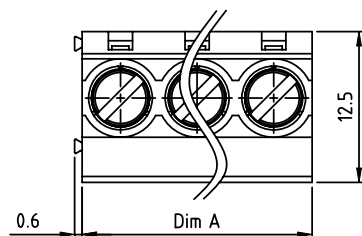
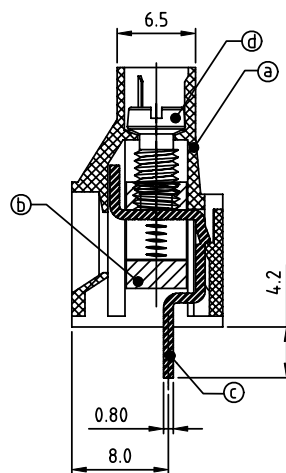
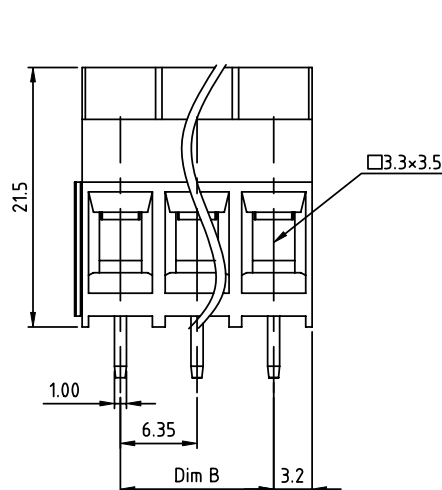


PRODUCT NUMBER

PITCH



T7xx03x000J0G

6.35 mm


 RECOMMENDED P.C.B LAYOUT  
 TOP VIEW


## Material:

- Item ① Terminal housing : Thermoplastic (UL 94V-0)
- Item ② Clamp : Brass , Ni plated
- Item ③ Solder pin : Copper , Tin plated
- Item ④ Terminal screw: Steel Zinc plating"-slot type

- Electrical cULus TUV
- Voltage rating: 300VAC 450VAC
  - Current rating: 30A 41A
  - Wire range: 0.20-6.0mm<sup>2</sup>
  - Solid wire(AWG): 10-24
  - Stranded wire(AWG): 10-24
  - Torque: 6.9 Lb-in 0.85 N.m
  - Screw: M3.5
  - Wire strip length: 6-7mm
  - Withstanding Voltage: 1.6KV 2.5KV
  - Operating temperature: -40°C to +115°C
  - Soldering temperature: 260°C±5°C/5 Sec
  - Safety Approval:  

PART NO.: T7 xx 0 3 x 0 00J0 G

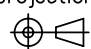

N = Number of poles  
 Dim A=Nx6.35  
 Dim B=(N-1)x6.35

Poles	Tolerance
2-6p	±0.15
7-11p	±0.25
12-16p	±0.35

End Stackable  
 No. of poles  
 02 2 poles  
 03 3 poles  
 ...  
 16 16 poles

Body Color  
 0 Black (RAL9005)  
 2 Red (RAL3001/D)  
 3 Orange(RAL2011/P)  
 4 Yellow(RAL1018/A)  
 5 Green(RAL6018/T)  
 6 Blue (RAL5015/A)  
 8 Grey(RAL7035/D)  
 9 White(RAL1102)  
 C Green(RAL6018/U)

RoHS compliant  
 (lead<4%)  
 In copper Alloy

mat'l. code				surface ASME Y14.5	tolerance ASME Y14.5	projection	product family	
ltr	ecn no	dr	date	tolerances unless otherwise specified		 MM	TERMINAL BLOCK	
B	T-19284	HF	081414	angles	X.±0.5		title	
				fillet	X.X±0.3		TERMINAL BLOCK	
					X*±1"		RISING CLAMP,180D WIRE INLET,END STACKABLE	
				dr	EVIN ZHONG 041414		dwg no	
				enr	EVIN ZHONG 041414		sheet 1 of 1 size	
				chr	HANKE FENG 041414		T7xx03x000J0G	
				appd	SHI JUN 041414		A4	
sheet index	revision	B					type	
	sheet	1					CUSTOMER Drawing	