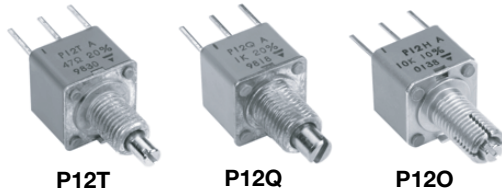


# Fully Sealed Container Cermet Potentiometer Professional Grade

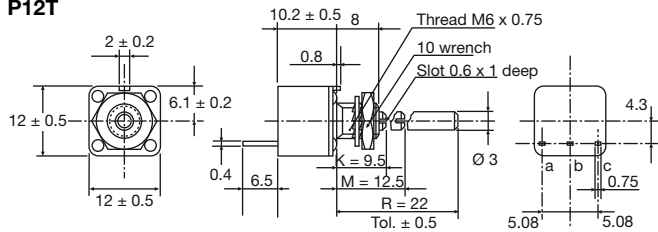

**FEATURES**

- 1 W at 70 °C
- Cermet element
- Test according to CECC 41000 or IEC 60393-1
- Mechanical strength
- Construction: fully sealed
- Professional grade
- Material categorization: for definitions of compliance please see [www.vishay.com/doc?99912](http://www.vishay.com/doc?99912)

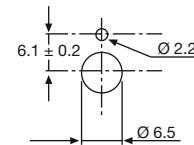
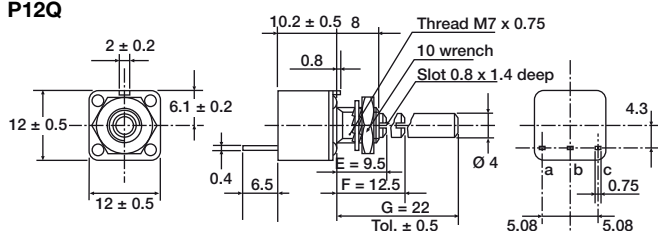
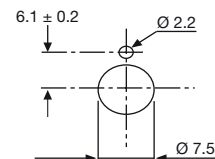
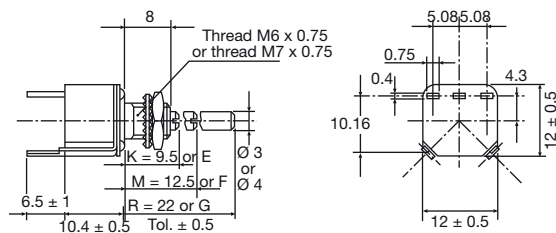
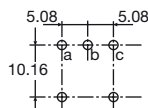
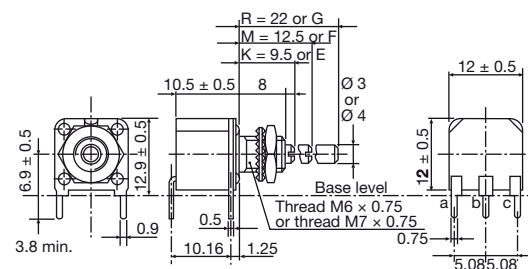
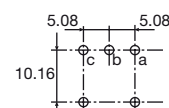

**RoHS**  
COMPLIANT

QUICK REFERENCE DATA	
Multiple module	No
Switch module	n/a
Detent module	n/a
Special electrical laws	A: linear, L: logarithmic, F: reverse logarithmic
Sealing level	IP 67
Lifespan	25K cycles

**DIMENSIONS** in millimeters  $\pm 0.5$  mm

**P12T**

**Panel cutout**

Panel thickness: 4 max.


**P12Q**

**Panel cutout**

**Leads Y**

**Terminal spacing**

**Leads X**

**Terminal spacing**


<b>ELECTRICAL SPECIFICATIONS</b>		
Resistive element	Cermet	
Electrical travel	270° ± 10°	
Resistance range	Linear taper	22 Ω to 10 MΩ
	Logarithmic taper	100 Ω to 2.2 MΩ
Standard series E3	1 - 2.2 - 4.7 and on request 1 - 2 - 5	
Tolerance	Standard	± 20 %
	On request	± 10 %
Taper		
Circuit diagram		
Power rating	Linear	1 W at +70 °C
	Logarithmic	0.5 W at +70 °C
Temperature coefficient	± 150 ppm/°C	
Limiting element voltage (linear taper)	350 V	
Contact resistance variation (typical)	3 % or 3 Ω	
End resistance (typical)	1 Ω	
Dielectric strength (RMS)	2000 V	
Insulation resistance (500 V <sub>DC</sub> )	10 <sup>6</sup> MΩ	

<b>MECHANICAL SPECIFICATIONS</b>		
Mechanical travel	300° ± 5°	
Mechanical travel	2 Ncm max.	
End stop torque	bushing O	15 Ncm max.
	bushings T and Q	35 Ncm max.
Tightening torque	150 Ncm max.	
Unit weight	7.6 g to 10 g max.	



ENVIRONMENTAL SPECIFICATIONS	
Operating temperature range	-55 °C to +125 °C
Climatic category	55/100/56
Sealing	Fully sealed - Container IP67

PERFORMANCE				
TESTS	CONDITIONS	TYPICAL VALUES AND DRIFTS		
		$\Delta R_T/R_T$ (%)	$\Delta R_{1-2}/R_{1-2}$ (%)	OTHER
Electrical endurance	1000 h at rated power 90°/30° - ambient temp. 70 °C	± 1 %	-	Contact res. variation: < 3 % Rn
Climatic sequence	Phase A dry heat 125 °C Phase B damp heat Phase C cold -55 °C Phase D damp heat 5 cycles	± 0.5 %	± 1 %	-
Damp heat, steady state	56 days 40 °C 93 % RH	± 0.5 %	± 1 %	Dielectric strength: 1000 V <sub>RMS</sub> Insulation resistance: > 10 <sup>4</sup> MΩ
Change of temperature	5 cycles -55 °C at +125 °C	± 0.5 %	-	-
Mechanical endurance	25 000 cycles	± 3 %	-	Contact res. variation: < 2 % Rn
Shock	50 g's at 11 ms 3 successive shocks in 3 directions	± 0.1 %	± 0.2 %	-
Vibration	10 Hz to 55 Hz 0.75 mm or 10 g's during 6 h	± 0.1 %	-	$\Delta V_{1-2}/V_{1-3} \leq \pm 0.2 \%$

**Note**

- Nothing stated herein shall be construed as a guarantee of quality or durability

STANDARD RESISTANCE ELEMENT DATA							
STANDARD RESISTANCE VALUES	LINEAR TAPER			LOGS TAPER			TYPICAL TCR -55 °C +125 °C
	MAX. POWER AT 70 °C	MAX. WORKING VOLTAGE	MAX. WIPER CURRENT	MAX. POWER AT 70 °C	MAX. WORKING VOLTAGE	MAX. WIPER CURRENT	
Ω	W	V	mA	W	V	mA	ppm/°C
22	1	4.69	213.2				± 150
47	1	6.85	145.8				
100	1	10	100				
220	1	14.8	67.4				
470	1	21.6	46.1				
1K	1	31.6	31.6	0.5	22.4	22.4	
2.2K	1	46.9	21.3	0.5	33.2	15.1	
4.7K	1	63.5	14.5	0.5	48.5	10.3	
10K	1	100	10	0.5	79.7	7.07	
22K	1	148.3	6.7	0.5	105	4.77	
47K	1	216.7	4.6	0.5	153	3.26	
100K	1	316.2	3.16	0.5	224	2.24	
220K	0.56	350	1.59	0.5	332	1.51	
470K	0.26	350	0.75	0.26	350	0.74	
1M	0.12	350	0.35	0.12	350	0.35	
2.2M	0.05	350	0.16	0.05	350	0.16	
4.7M	0.02	350	0.07				
10M	0.01	350	0.01				

**MARKING**

- Vishay trademark
- Part number (including ohmic value and tolerance code)
- Manufacturing date
- Marking of terminals: 1 or a

**PACKAGING**

- For shafts AJ, EJ: In box of 15 pieces (code B1)
- For other shafts: In box of 25 pieces (code B2)

**OPTIONS**

SPECIAL FEATURES	
Shafts	Lengths are measured from the mounting surface to the free end of shaft. Shaft slot is aligned with the wiper within $\pm 10^\circ$ . Special shafts are available, in accordance with drawings supplied by customers. We recommend customers not to machine shafts, in order to avoid damage. Bending or torsion of terminals should be avoided.
Shaft and panel sealing hardware	The type P12T with AB (old code M) or AJ (old code R) shaft can be provided with an optional "DE" sealing hardware which ensures sealing of both the shaft and the mounting panel. DE sealing hardware can be supplied in a separate bag. <p><b>DE shaft and panel sealing hardware</b></p>
Shaft locking	The shaft locking bushing is available only with P12O potentiometers. Torque applied to locking nuts should not exceed 15 Ncm. <p><b>P12OL with spindle locking nut</b></p>

**OPTION RELATIVE TO APPLICATION**

**"K14" OPTION** for AMS applications (avionics, military, and space)

**"K17" OPTION** for MEDICAL applications

Option guarantees:

- Reinforced incoming inspection on raw material
- Traceability of all materials used in the composition of the product
- 50-year traceability (AMS market) / 20-year traceability (MEDICAL market)
- Customer information for any process or product modification having an impact on the function, mountability, shape or reliability of the product
- Periodic product monitoring
- Dedicated technical specification



ORDERING INFORMATION (part number)																	
P	1	2	O	A	B	S	4	7	2	M	A	B	2	D	E		
MODEL	BUSHING			SHAFT			LEADS	OHMIC VALUE		TOLERANCE	TAPER	PACKAGING	SPECIAL				
P12	∅	L	Old codes	∅	L	Old codes	S = STD X Y	Linear from 22 Ω to 10 MΩ  Logarithmic from 100 Ω to 2.2 MΩ  472 = 4.7 kΩ		M = 20 % On request: K = 10 %	A = linear L = clockwise logarithmic F = inverse clockwise logarithmic	Shafts AJ and EJ: B1 = box of 15 pieces Other shafts: box of 25 pieces	DE = shaft and panel sealed hardware or special code given by Vishay				
	T	6	8	T	AA	3	9.5	K									
	Q	7	8	Q	AB	3	12.5	L, M									
	O	6	11	H	AJ	3	22	R									
					EA	4	9.5	E									
					EB	4	12.5	F									
					EJ	4	22	G									
					AP	Custom shaft											

PART NUMBER DESCRIPTION (for information only)													
P12	H			L	4K7	20 %	A		BO	DE			e3
MODEL	BUSHING	LEADS	SPECIAL	SHAFT	VALUE	TOLERANCE	TAPER	SPECIAL	PACKAGING	SPECIAL	AP N°	SPECIAL	LEAD FINISH

ACCESSORIES	
Potentiometers are delivered with accessories (nut, washer...)	
Additional Accessories (to order separately)	<a href="http://www.vishay.com/doc?51051">www.vishay.com/doc?51051</a>
Control knobs	<a href="http://www.vishay.com/doc?51101">www.vishay.com/doc?51101</a>

RELATED DOCUMENTS	
<b>APPLICATION NOTES</b>	
Potentiometers and Trimmers	<a href="http://www.vishay.com/doc?51001">www.vishay.com/doc?51001</a>
Guidelines for Vishay Sfernice Resistive and Inductive Components	<a href="http://www.vishay.com/doc?52029">www.vishay.com/doc?52029</a>



## Disclaimer

ALL PRODUCT, PRODUCT SPECIFICATIONS AND DATA ARE SUBJECT TO CHANGE WITHOUT NOTICE TO IMPROVE RELIABILITY, FUNCTION OR DESIGN OR OTHERWISE.

Vishay Intertechnology, Inc., its affiliates, agents, and employees, and all persons acting on its or their behalf (collectively, "Vishay"), disclaim any and all liability for any errors, inaccuracies or incompleteness contained in any datasheet or in any other disclosure relating to any product.

Vishay makes no warranty, representation or guarantee regarding the suitability of the products for any particular purpose or the continuing production of any product. To the maximum extent permitted by applicable law, Vishay disclaims (i) any and all liability arising out of the application or use of any product, (ii) any and all liability, including without limitation special, consequential or incidental damages, and (iii) any and all implied warranties, including warranties of fitness for particular purpose, non-infringement and merchantability.

Statements regarding the suitability of products for certain types of applications are based on Vishay's knowledge of typical requirements that are often placed on Vishay products in generic applications. Such statements are not binding statements about the suitability of products for a particular application. It is the customer's responsibility to validate that a particular product with the properties described in the product specification is suitable for use in a particular application. Parameters provided in datasheets and / or specifications may vary in different applications and performance may vary over time. All operating parameters, including typical parameters, must be validated for each customer application by the customer's technical experts. Product specifications do not expand or otherwise modify Vishay's terms and conditions of purchase, including but not limited to the warranty expressed therein.

Hyperlinks included in this datasheet may direct users to third-party websites. These links are provided as a convenience and for informational purposes only. Inclusion of these hyperlinks does not constitute an endorsement or an approval by Vishay of any of the products, services or opinions of the corporation, organization or individual associated with the third-party website. Vishay disclaims any and all liability and bears no responsibility for the accuracy, legality or content of the third-party website or for that of subsequent links.

Vishay products are not designed for use in life-saving or life-sustaining applications or any application in which the failure of the Vishay product could result in personal injury or death unless specifically qualified in writing by Vishay. Customers using or selling Vishay products not expressly indicated for use in such applications do so at their own risk. Please contact authorized Vishay personnel to obtain written terms and conditions regarding products designed for such applications.

No license, express or implied, by estoppel or otherwise, to any intellectual property rights is granted by this document or by any conduct of Vishay. Product names and markings noted herein may be trademarks of their respective owners.