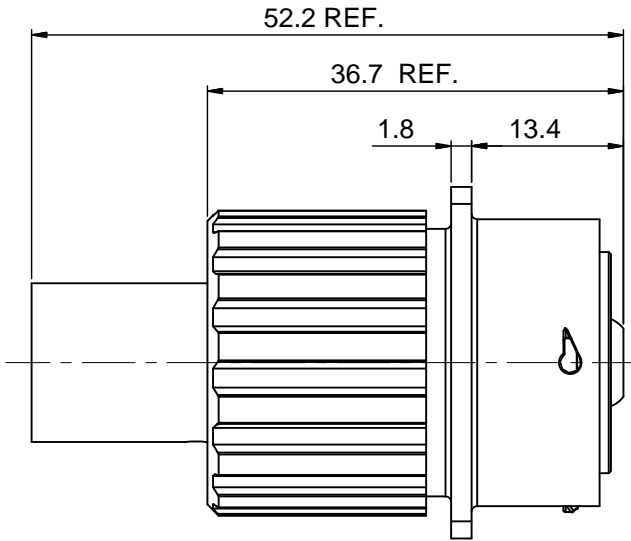
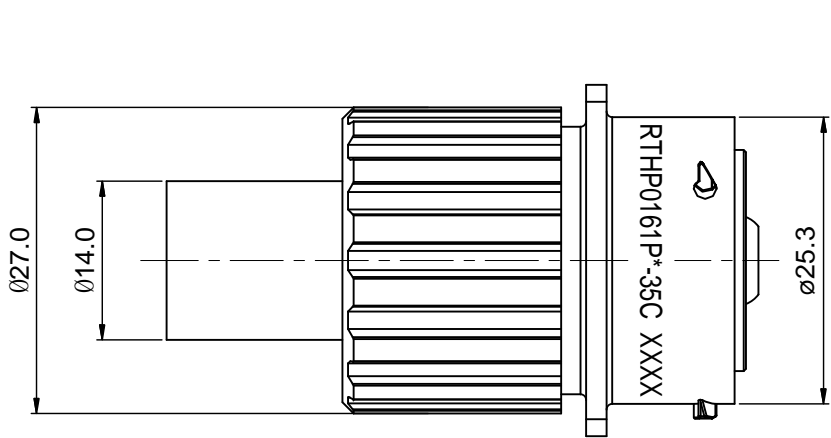
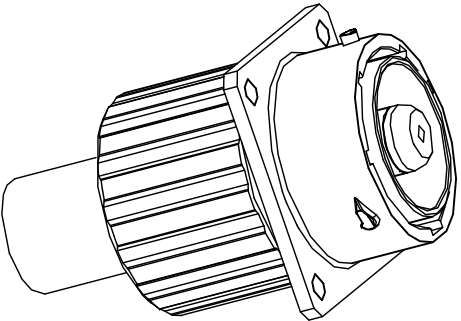
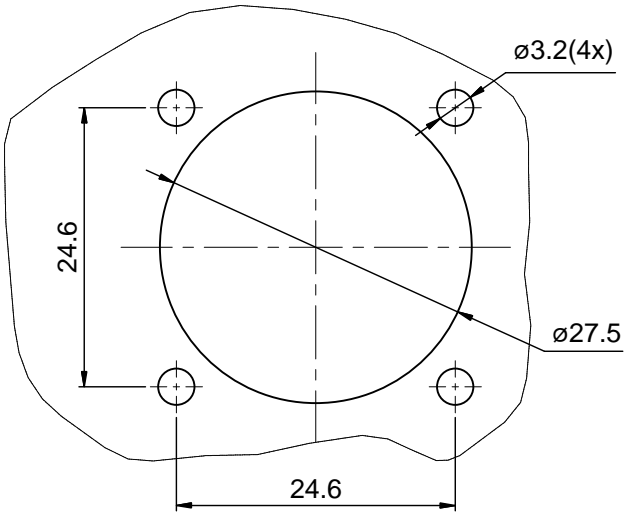
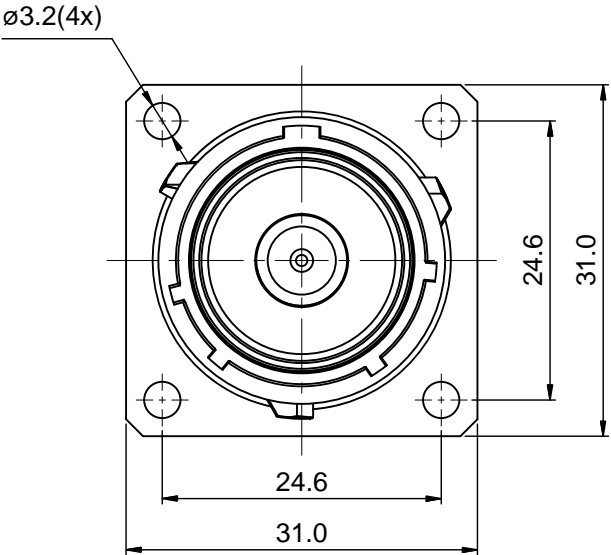


REVISIONS					
REV	ECO	DESCRIPTION	DATE	BY	APPR
B1	-	RELEASE NEW DWG FORMAT	08/14/14	DRACK	TOMMY

- NOTES:
- MATERIAL:
    - HOUSING BODY: ZINC DIE-CAST, NICKEL PLATED
    - INSULATION INSERT: PA66,UL94 V0
    - CONTACT: COPPER ALLOY, SILVER PLATED
    - SEAL: SILICONE RUBBER
  - SPECIFICATIONS:
    - CURRENT RATING: 130 AMPS MAX.
    - VOLTAGE RATING: 630 V AC/DC
    - OPERATING TEMPERATURE: -40°C TO +125°C
    - DIELECTRIC WITHSTANDING VOLTAGE:  
LESS THAN 2 MILLIAMPS CURRENT IEAKAGE @ 5000 VOLTS AC
    - DEGREE OF PROTECTION: IP67 (MATED CONDITION)
    - DEGREE OF POLLUTION: 3 PER UL840
    - OVERVOLTAGE CATEGORY: III PER UL840
    - MATING CYCLE DURABILITY: >100 CYCLES
    - RoHS COMPLIANT
  - ALL DIMENSIONS ARE FOR REFERENCE USE ONLY.
  - "\*" DENOTE KEY POSTION OF "N","W","X","Y" OR "Z".
  - CONTACT P/N: HP35CCS



KEY POS	PART NO.
N	RTHP0161PN-35C
W	RTHP0161PW-35C
X	RTHP0161PX-35C
Y	RTHP0161PY-35C
Z	RTHP0161PZ-35C



Mounting Hole

	SEE PART NUMBER			
	CHART			
QUANTITY	PART NUMBER	DESCRIPTION	ITEM	
MATERIALS LIST				
<div>UNLESS OTHERWISE SPECIFIED</div> <div>1) All dimensions are in metric(mm). 2) Tolerances are as follows: 1 PL DEC ±0.30 2 PL DEC ±0.15 3 PL DEC ±0.08</div> <div>3) Note reference = </div>	SIGNATURES	DATE	<div>Amphenol</div> <div>Sine Systems - <a href="http://www.amphenol-sine.com">www.amphenol-sine.com</a> 44724 Morley Drive Clinton Township, MI 48036</div>	
	DRAWN: Drack	08/14/14		
	CHECKED:			
	ENGINEER:			
	APPROVAL:			
MATERIAL SPECIFICATIONS:	CUSTOMER:		ECO-MATE,RECEPTACLE,8mm SINGLE PIN CONTACT, CRIMP TYPE,FLANGE WALL MOUNTING	
PROCESS SPECIFICATIONS:	THIS DRAWING IS SUPPLIED FOR INFORMATION ONLY. DESIGN FEATURES, SPECIFICATIONS AND PERFORMANCE DATA SHOWN HEREON ARE THE PROPERTY OF THE AMPHENOL CORPORATION. NO RIGHTS OF REPRODUCTION ARE IMPLIED. ALL DIMENSIONS ARE SUBJECT TO NORMAL MANUFACTURING VARIATIONS.			
NEXT ASSY:	SIZE B	TYPE C-	DWG NO: RTHP0161P*-35C	REVISION B1
	SCALE: 3 : 2		SHEET 1	OF 1

TITLE: ECO-MATE,RECEPTACLE,8mm SINGLE PIN CONTACT,CRIMP TYPE,FLANGE WALL MOUNTING  
DWG NO: RTHP0161P\*-35C  
REV: B1  
SH: 1  
OF: 1