

# Product Data Sheet

DIN 41612 Straight-type spring-loaded connector, Type B/3,  
Part No. 102-80075

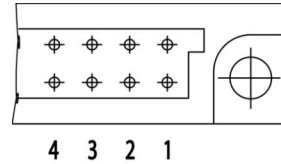
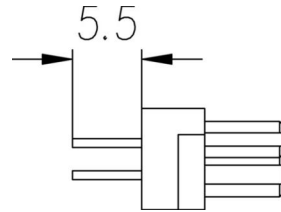
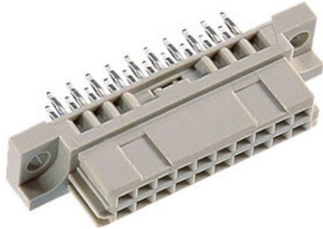


Illustration similar



Perpendicular



Through Hole



Rugged

- Connector length: 5.5 mm
- Number of poles: 20
- Hand Soldering
- Grade 2



» to product on [www.ept.de](http://www.ept.de)



» to product group DIN 41612

# Product Data Sheet

DIN 41612 Straight-type spring-loaded connector, Type B/3,  
Part No. 102-80075



## Technical Specifications

### Basics

Specification	IEC 60603-2 (DIN 41612)
Performance Level	2
No. of Contacts	20
Termination Technology	Soldering Techniques
Termination Length	5.5 mm
Board-to-Board Distance	16.85 mm
Operating Temperature Range	-55°C to +125°C

### Material

Insulator Material	Glass-fiber-reinforced PBT, UL 94 V-0
CTI value <i>IEC 60112</i>	200
Contact Material	copper alloy

### Mechanical

Pitch	2.54 mm
Mating Force	18 N
Separating Force per Pin	> 0.15 N
Durability	400 insertion cycles

### Electrical

Operational Current	2.6 A
Contact Resistance	20 mΩ
Clearance and Creepage	≥ 1.2 mm
Insulation Resistance	> 10 <sup>6</sup> MΩ
Test Voltage	1000 V

### Processing

Soldering Temperature	up to 260°C
-----------------------	-------------

### Approval / Compliance

UL file	E130314
Environment	RoHS compliant

# Product Data Sheet

DIN 41612 Straight-type spring-loaded connector, Type B/3,  
Part No. 102-80075

---



## Derating Diagram

# Product Data Sheet

DIN 41612 Straight-type spring-loaded connector, Type B/3,  
Part No. 102-80075



## Modifications

Available on request

- without mounting flange
- Special lengths for connections
- Grade I + III or custom
- Special configuration

## Accessories

» DIN 41612 Kodierung Bauform B und C  
Artikelnummer 104-19003

## Drawings

Component data for this product you can request through [sales@ept.de](mailto:sales@ept.de)