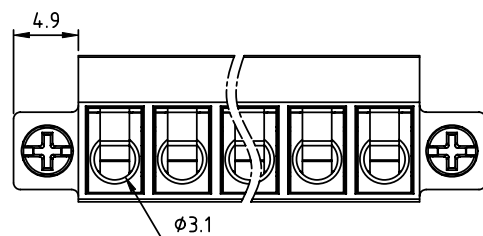
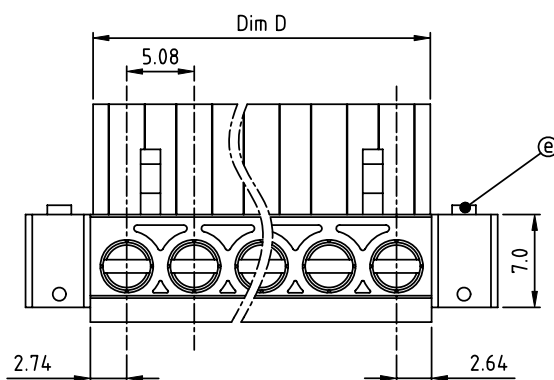
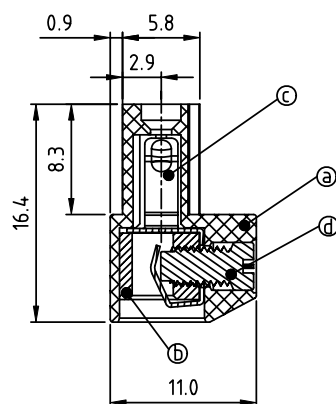
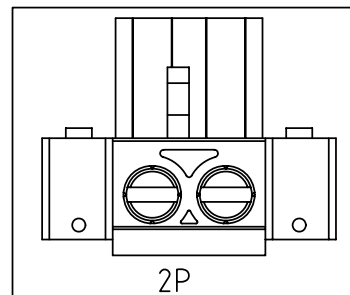
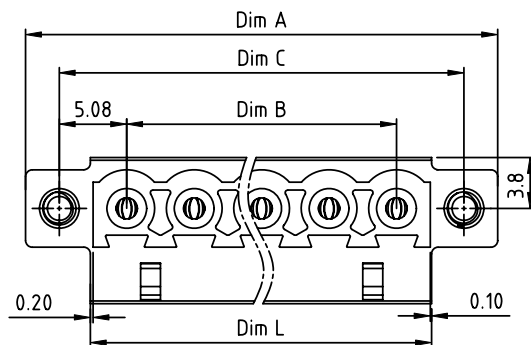


PRODUCT NUMBER

PITCH

EZxx51x200J0G

5.08 mm



N=NUMBER OF POLES

Dim L=N×5.08+0.3	
Dim A=(N-1)×5.08+15.24	
Dim B=(N-1)×5.08	
Dim C=(N-1)×5.08+10.16	
Dim D=N×5.08	
POLES	Tolerance
2P-6P	±0.15
7P-12P	±0.20
13P-18P	±0.25
19P-24P	±0.30

PART NO.: EZ xx 51 x 2 00J0 G

Solid block		Color	RoHS compliant
No. of poles	2	Black (RAL9005)	(lead<4%)
02 2 poles	3	Red (RAL3001/D)	In copper Alloy
03 3 poles	4	Orange(RAL2011/P)	
...	5	Yellow(RAL1018/A)	
...	6	Green(RAL6018/T)	
24 24 poles	8	Blue (RAL5015/A)	
	9	Grey(RAL7035/D)	
	9	White(RAL1102)	
	C	Green(RAL6018/U)	

Material:

- Item ① Terminal(housing): Thermoplastic (UL94V-0)
- Item ② Clamp: Brass(CuZn) Ni plated
- Item ③ Female contact: PhBz Tin plated
- Item ④ Terminal Screw: Steel zinc plated. "-" solt type
- Item ⑤ With flange screw: M2.5 Steel Zinc plated. "+/-" solt type

Electrical: cULus

- Voltage rating: 300 V
- Current rating: 15 A
- Wire range:
- Solid wire(AWG):12-22
- Stranded wire(AWG):12-22
- Torque: 4.3 Lb-In
- Screw:M3
- Wire strip length:7-8 mm
- Withstanding Voltage:1.6KV
- Operating temperature:-40°C to +115°C
- Safety Approval: cULus

mat'l. code				surface	tolerance	projection	product family	
ltr ecn no dr date				ASME Y14.5	ASME Y14.5		TERMINAL BLOCK	
				tolerances unless otherwise specified			title	
				angles	X.±0.5	MM	TERMINAL BLOCK	
				±0.1	X.X±0.3		PLUGGABLE PLUG, WITH FLANGE	
				X'±1"	X.XX±0.1	scale	dwg no	
				dr	EVIN ZHONG	041814	sheet 1 of 1	
				enr	EVIN ZHONG	041814	EZxx51x200J0G	
				chr	HANKE FENG	041814	A4	
				appd	SHI JUN	041814	type	
							CUSTOMER Drawing	
sheet index	revision	A						
	sheet	1						