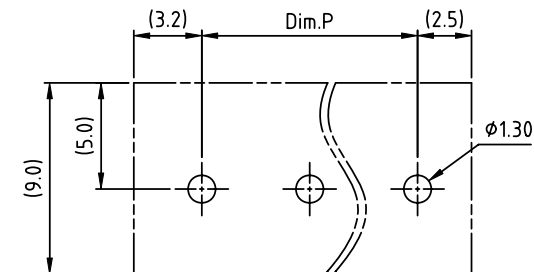
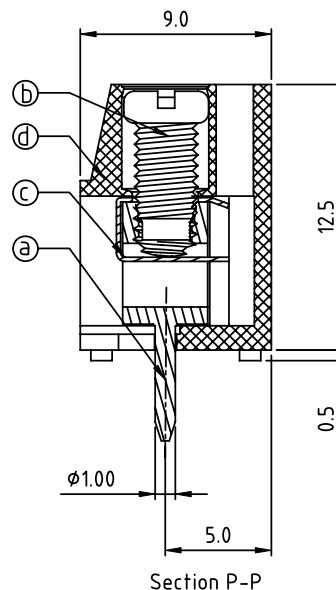
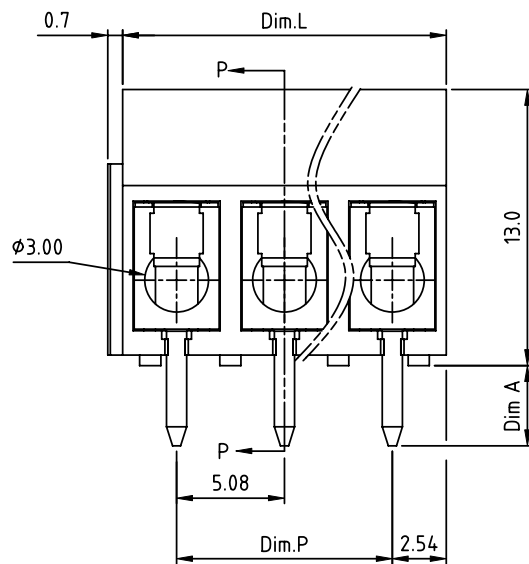
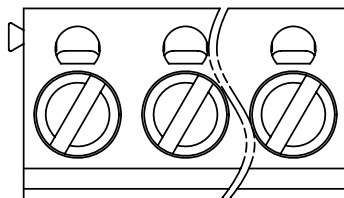


PRODUCT NUMBER	PITCH
TAx41x00J0G	5.08 mm



RECOMMENDED P.C.B LAYOUT
TOP VIEW

Material

- ① Terminal : Brass(CuZn) Tin plated
- ② Terminal screw: Steel Zinc plating "-" slot type
- ③ Wire guard: Stainless steel
- ④ Terminal housing: Thermoplastic (UL94V-0)

Electrical cULus

- Voltage rating: 300VAC
- Current rating: 15A
- Wire range:
- Solid wire(AWG): 14-22
- Stranded wire(AWG): 14-22
- Torque(Lb-In): 3.5
- Screw: M3
- Wire strip length: 6-7mm
- Withstanding Voltage: 1.6KV
- Operating temperature: -40°C to +115°C
- Soldering temperature: 260°C±5°C/5 Sec
- Safety Approval: cULus

N = Number of poles
Dim L=Nx5.08
Dim P=(N-1)x5.08

	Dim L	Dim P
2-6p	±0.20	±0.15
7-12p	±0.25	±0.20
13-18p	±0.30	±0.25
19-24p	±0.40	±0.30

PART NO.: TA xx 41 x x 00J0 G

No. of poles	Color	Dim A	RoHS compliant
02 2 poles	0 Black (RAL9005)	1 3.8mm	(lead<4%)
03 3 poles	2 Red (RAL3001/D)	2 3.5mm	In copper Alloy
...	3 Orange(RAL2011/P)	3 4.0mm	
...	4 Yellow(RAL1018/A)		
24 24 poles	5 Green(RAL6018/T)		
	6 Blue (RAL5015/A)		
	8 Grey(RAL7035/D)		
	9 White(RAL1102)		
	C Green(RAL6018/U)		

mat'l. code				surface	tolerance	projection	product family	
ltr ecn no dr date				ASME Y14.5	ASME Y14.5		TERMINAL BLOCK	
				tolerances unless otherwise specified		MM	title	
				angles	X.±0.5		TERMINAL BLOCK	
				flat	X.X±0.3		WIRE PROTECTOR,180D WIRE INLET	
				X*±1°	X.XX±0.1	scale	dwg no	
				dr	HANKE FENG	010714	sheet 1 of 1 size	
				enr	HANKE FENG	010714	TAXx41x00J0G	
				chr	SHI JUN	010714	A4	
				appd	SHI JUN	010714	type	
							CUSTOMER Drawing	
sheet index	revision	A						
	sheet	1						