

DFCH31G74HDJAA

Part Number/Tape & Reel information

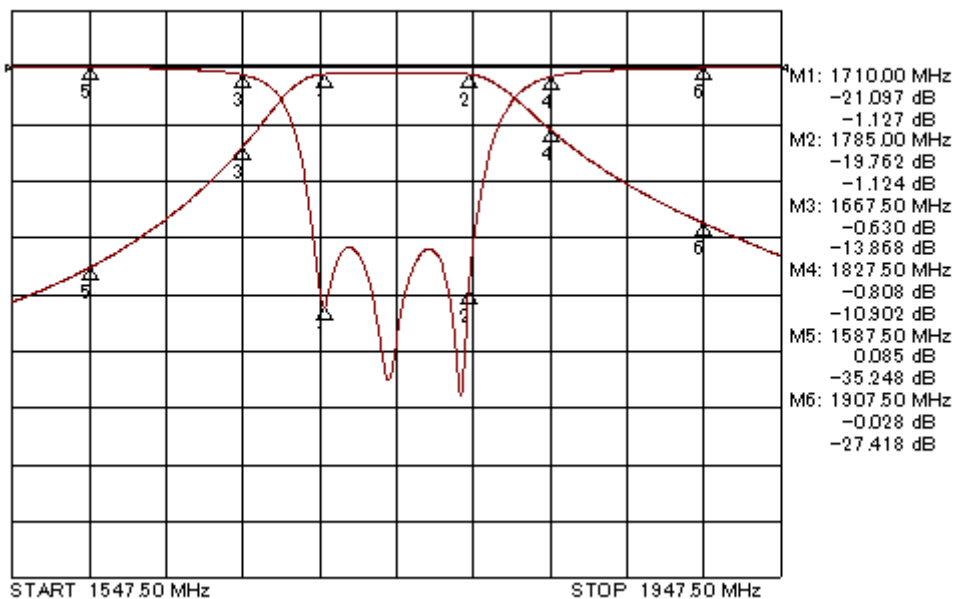
Part Number	Packaging	MOQ
DFCH31G74HDJAA-RD1	330 mm dia. reel	1000 pcs/reel

Specifications -35 to +85°C

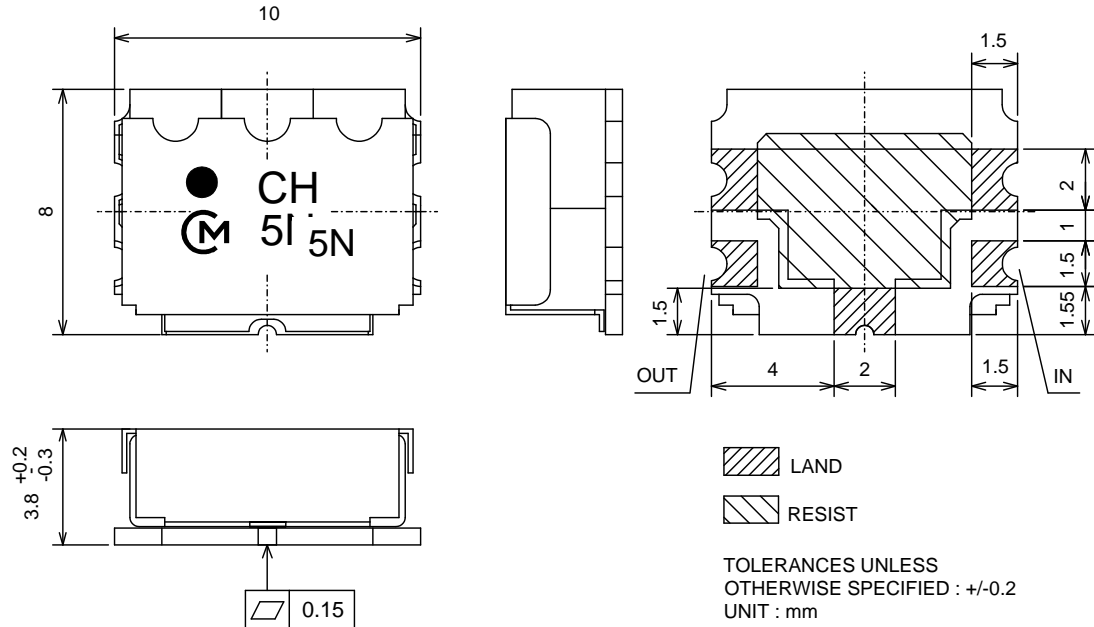
Parameter	IN→OUT
Center Frequency	F0 : 1747.5 MHz
Band Width (BW)	F0 +/- 37.5 MHz
IL at BW	2.0 dB max.
Ripple at BW	1.0 dB max.
VSWR at BW	2.0 max.
Input Power	1.0 W max.
Attenuation	F0±80MHz 8 dB min.
Absolute value	F0-160MHz 30 dB min.
	F0+160MHz 26 dB min.
Characteristic Impedance	50Ω

Frequency Response

S11 logMAG 5dB/REF0dB
S21 logMAG 10dB/REF0dB



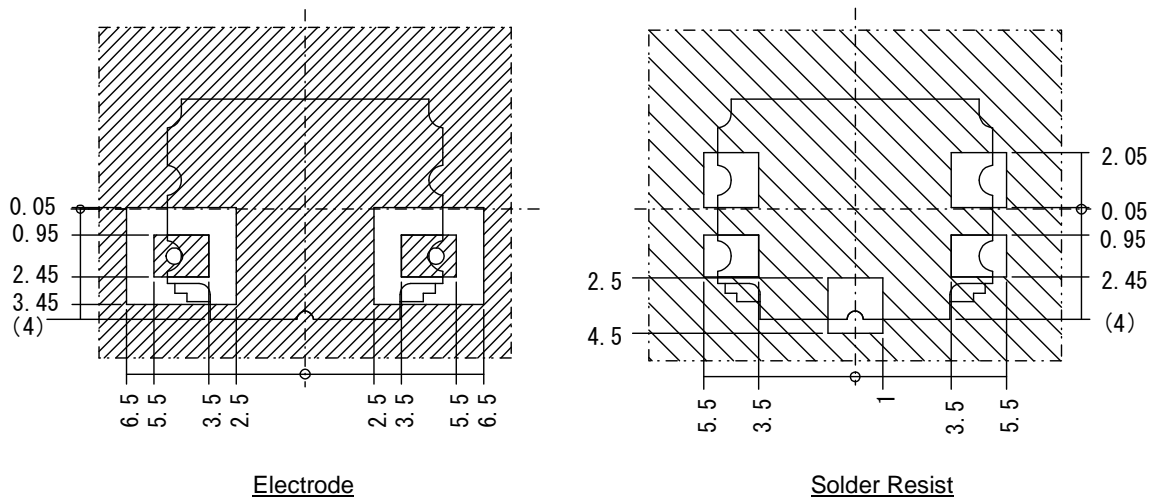
DFCH31G74HDJAA

Dimensions and Marking

NOTE : Construction of Number

LOT NO : 5N 5 : Year

N: Month (1 to 9, Oct.-O, Nov.-N, Dec.-D)

Recommend Land Pattern (reference)

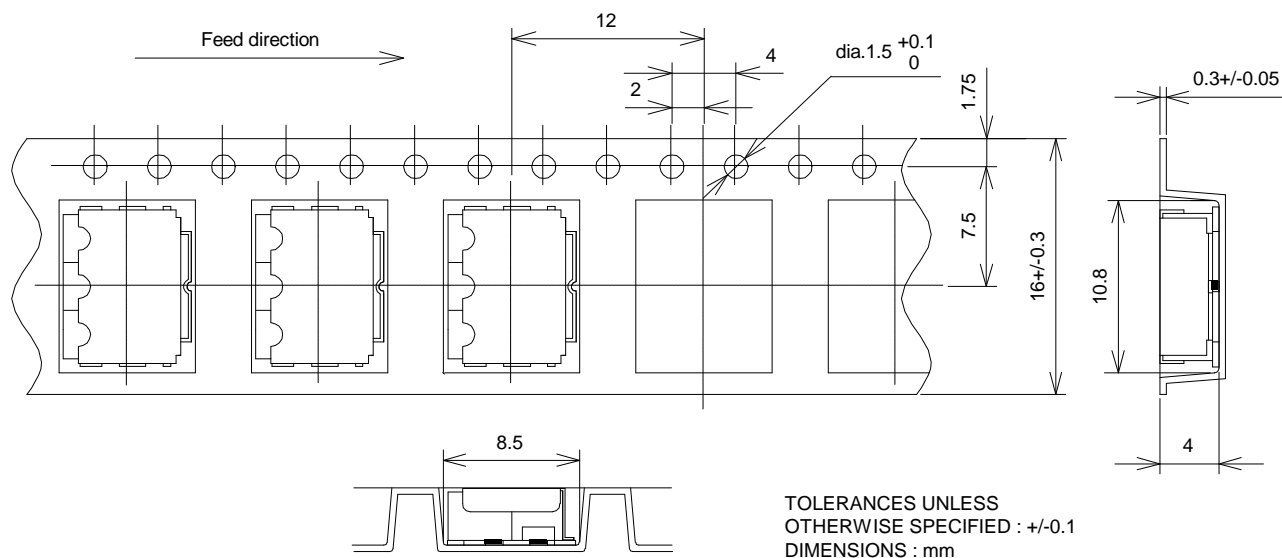
Note : Impedance of signal lines should be 50 ohms including land pattern. This standard condition is applying to the glass epoxy board ($t = 1.0\text{mm}$, dielectric constant = 4.8, copper plating on both surfaces) and the land patterns are connected to 50 ohms micro-strip lines on back side surface through the via hole.

All Rights Reserved, Copyright© Murata Manufacturing Co., Ltd

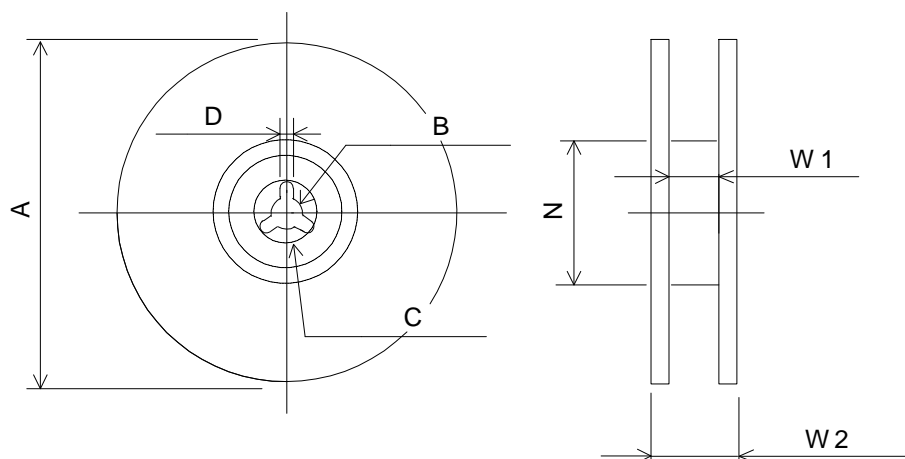
*Note: All the technical data and information contained herein are subject to change without advanced notice.

DFCH31G74HDJAA

Dimensions of Carrier Tape



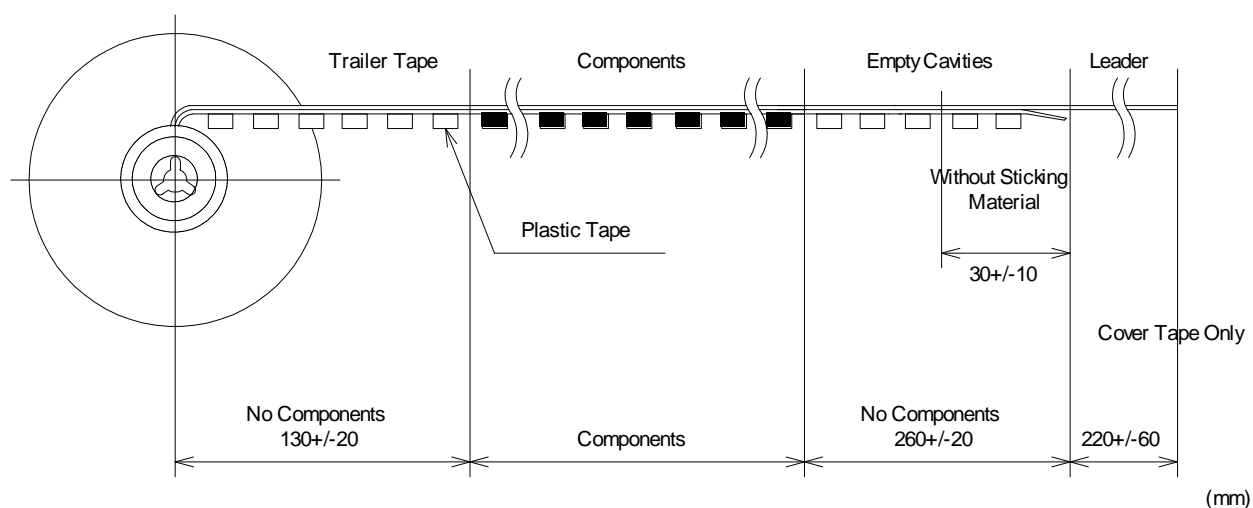
Dimensions of Reel



Murata Part Number	A \pm 2.0	B \pm 0.5	C \pm 0.8	D \pm 0.5	N (min.)	W1 \pm 1.5	W2 (max.)
DFCH31G74HDJAA-RD1	ϕ 330	ϕ 13	ϕ 21	2	ϕ 50	17.5	23

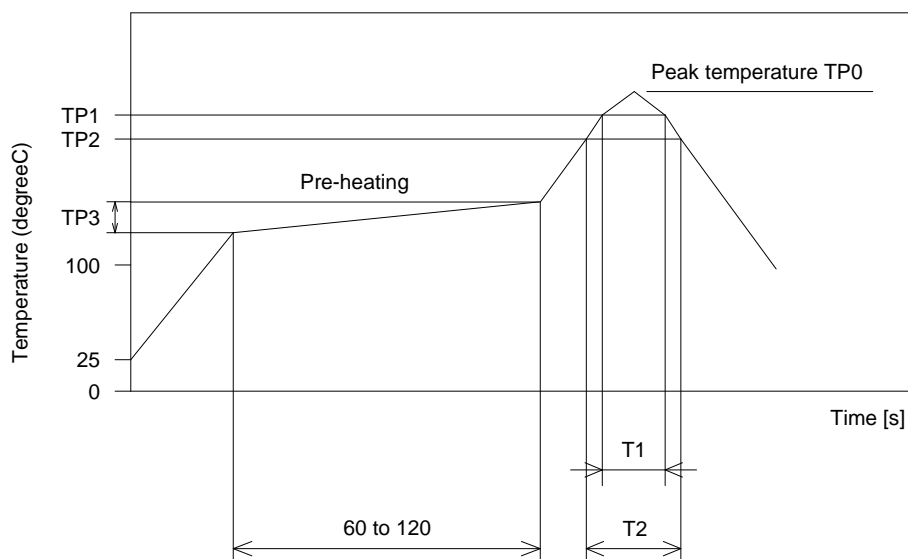
DFCH31G74HDJAA

Taping Condition



DFCH31G74HDJAA

Reflow Soldering Standard Conditions

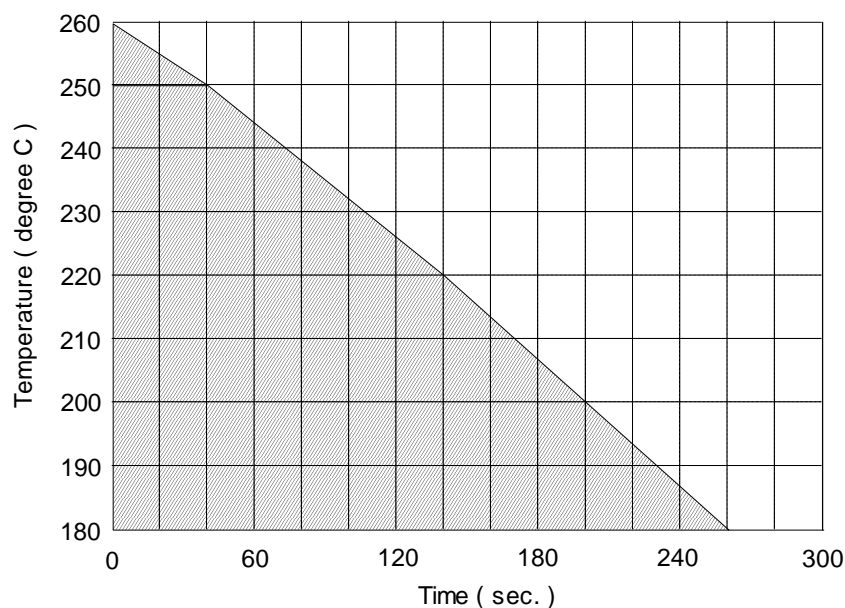


Measuring point of temperature : IN-OUT Terminals of The Device

Reflow Soldering : Both Convection and Infrared Rays, Hot Air and Hot Plate

		TP0 (°C)	TP1 (°C)	T1 (s)	TP2 (°C)	T2 (s)	TP3 (°C)
Reflow standard condition	Sn-40Pb solder	225+/-5	200	20 to 40	---	---	140 to 160
	Sn-3Ag-0.5Cu solder	245+/-5	220	30 to 60	---	---	150 to 180
Test condition of reflow heat resistance		260+5/-0	240	20	220	70	150 to 180

Allowable Temperature and Time of Reflow Soldering



All Rights Reserved, Copyright© Murata Manufacturing Co., Ltd

*Note: All the technical data and information contained herein are subject to change without advanced notice.