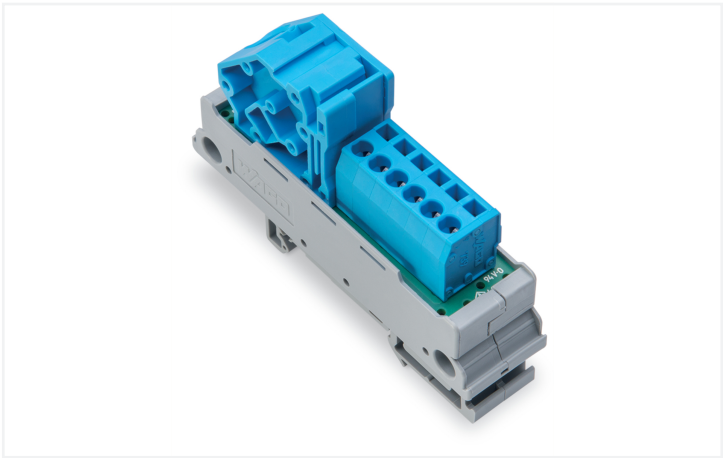
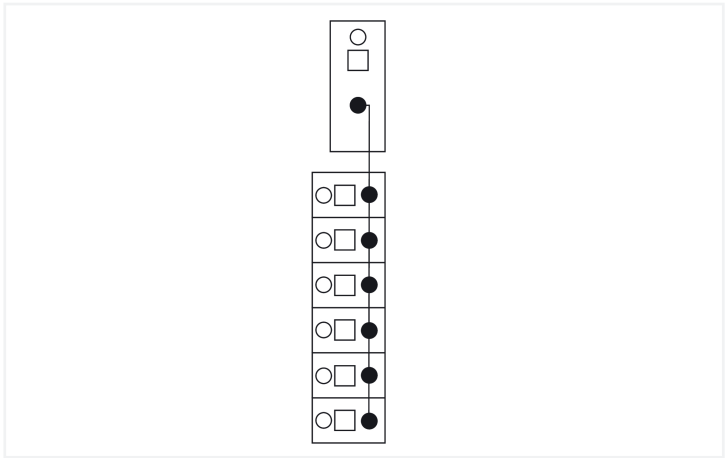


**Data Sheet | Item Number: 830-800/000-302/000-006**  
Potential distribution module; 1 potential; with 1 input clamping point; Conductor cross-section up to 16 mm²; with 6 output clamping points; Conductor cross-section up to 2.5 mm²; blue  
<https://www.wago.com/830-800/000-302/000-006>



Color: ■ blue



Electrical data	
Operating voltage	≤ 250 VAC/VDC
Current per connection (max.)	12 A
Total current per potential (max.)	65 A
Specialty functions	with 1 input clamping point; with 6 output clamping points

Connection data	
Total number of potentials	1
Note (conductor cross-section)	12 AWG: THHN, THWN
Connection 1	
Connection type	Input
Mating direction	45°
Connection technology	CAGE CLAMP®
WAGO connector	WAGO 745 Series
Solid conductor	0.2 ... 16 mm² / 24 ... 6 AWG
Fine-stranded conductor	0.2 ... 16 mm² / 24 ... 6 AWG
Strip length	11 ... 12 mm / 0.43 ... 0.47 inches

Connection 2	
Connection type	Output
Mating direction 2	45°
Connection technology	CAGE CLAMP®
WAGO connector	WAGO 739 Series
Solid conductor	0.08 ... 2.5 mm² / 28 ... 12 AWG
Fine-stranded conductor	0.08 ... 2.5 mm² / 28 ... 12 AWG
Strip length	8 ... 9 mm / 0.31 ... 0.35 inches



Physical data		
Width		21 mm / 0.81 inches
Height		85 mm / 3.35 inches
Depth from upper-edge of DIN-rail		49 mm / 3.35 inches
Mechanical data		
Mounting type		DIN-35 rail
Housing design		Mounting carrier
Material data		
Color		blue
Fire load		1.11 MJ
Weight		50.5 g
Environmental requirements		
Ambient temperature (operation)		-20 ... +50 °C
Relative humidity		≤ 95 % (without condensation)
Standards and specifications		
Standards/specifications		cULus 61010-2-201
Commercial data		
PU (SPU)		10 (1) pcs
Packaging type		Box
Country of origin		US
GTIN		4055143376006
Customs tariff number		85369010000
Product classification		
UNSPSC		39121410
eCl@ss 10.0		27-14-11-52
eCl@ss 9.0		27-14-11-52
ETIM 9.0		EC002780
ETIM 8.0		EC002780
ECCN		NO US CLASSIFICATION
Environmental Product Compliance		
RoHS Compliance Status		Compliant,No Exemption



Approvals / Certificates

General approvals



Approval	Standard	Certificate Name
EAC GZO Almaty Standart	TP TC 004/2011	EAC CoC 03084

Declarations of conformity and manufacturer's declarations

Approval	Standard	Certificate Name
EU-Declaration of Confor- mity WAGO GmbH & Co. KG	-	-
UK-Declaration of Confor- mity WAGO GmbH & Co. KG	-	-

Downloads

Environmental Product Compliance

Compliance Search

Documentation

Bid Text			
830-800/000-302/000-006	01.07.2019	docx 15.36 KB	
830-800/000-302/000-006	19.02.2019	xml 3.65 KB	

CAD/CAE-Data

CAD data

CAE data

1 Compatible Products

1.1 Optional Accessories

1.1.1 Ferrule

1.1.1.1 Ferrule



[Item No.: 216-262](#)  
Ferrule; Sleeve for 0.75 mm² / 18 AWG; in-  
sulated; electro-tin plated; electrolytic  
copper; gastight crimped; acc. to DIN  
46228, Part 4/09.90; gray

[Item No.: 216-263](#)  
Ferrule; Sleeve for 1 mm² / AWG 18; insu-  
lated; electro-tin plated; electrolytic cop-  
per; gastight crimped; acc. to DIN 46228,  
Part 4/09.90; red

[Item No.: 216-264](#)  
Ferrule; Sleeve for 1.5 mm² / AWG 16; in-  
sulated; electro-tin plated; electrolytic  
copper; gastight crimped; acc. to DIN  
46228, Part 4/09.90; black

[Item No.: 216-284](#)  
Ferrule; Sleeve for 1.5 mm² / AWG 16; in-  
sulated; electro-tin plated; electrolytic  
copper; gastight crimped; acc. to DIN  
46228, Part 4/09.90; black



1.1.1.1 Ferrule



**Item No.: 216-289**  
Ferrule; Sleeve for 10 mm<sup>2</sup> / AWG 8; insulated; electro-tin plated; electrolytic copper; gastight crimped; acc. to DIN 46228, Part 4/09.90; red



**Item No.: 216-209**  
Ferrule; Sleeve for 10 mm<sup>2</sup> / AWG 8; insulated; electro-tin plated; red



**Item No.: 216-266**  
Ferrule; Sleeve for 2.5 mm<sup>2</sup> / AWG 14; insulated; electro-tin plated; electrolytic copper; gastight crimped; acc. to DIN 46228, Part 4/09.90; blue



**Item No.: 216-286**  
Ferrule; Sleeve for 2.5 mm<sup>2</sup> / AWG 14; insulated; electro-tin plated; electrolytic copper; gastight crimped; acc. to DIN 46228, Part 4/09.90; blue



**Item No.: 216-267**  
Ferrule; Sleeve for 4 mm<sup>2</sup> / AWG 12; insulated; electro-tin plated; electrolytic copper; gastight crimped; acc. to DIN 46228, Part 4/09.90; gray



**Item No.: 216-287**  
Ferrule; Sleeve for 4 mm<sup>2</sup> / AWG 12; insulated; electro-tin plated; electrolytic copper; gastight crimped; acc. to DIN 46228, Part 4/09.90; gray



**Item No.: 216-208**  
Ferrule; Sleeve for 6 mm<sup>2</sup> / AWG 10; insulated; electro-tin plated; electrolytic copper; gastight crimped; acc. to DIN 46228, Part 4/09.90; yellow



**Item No.: 216-288**  
Ferrule; Sleeve for 6 mm<sup>2</sup> / AWG 10; insulated; electro-tin plated; electrolytic copper; gastight crimped; acc. to DIN 46228, Part 4/09.90; yellow

1.1.2 Marking

1.1.2.1 Marker



**Item No.: 2009-145**  
Mini-WSB Inline; for Smart Printer; 1700 pieces on roll; stretchable 5 - 5.2 mm; plain; snap-on type; white



**Item No.: 248-501**  
Mini-WSB marking card; as card; not stretchable; plain; snap-on type; white



**Item No.: 793-5501**  
WMB marking card; as card; for terminal block width 5 - 17.5 mm; stretchable 5 - 5.2 mm; plain; snap-on type; white



**Item No.: 793-501**  
WMB marking card; as card; not stretchable; plain; snap-on type; white



**Item No.: 2009-115**  
WMB-Inline; for Smart Printer; 1500 pieces on roll; stretchable 5 - 5.2 mm; plain; snap-on type; white

1.1.2.2 Marking strip



**Item No.: 709-196**  
Marking strips; for laser printer; translucent



**Item No.: 210-831**  
Marking strips; on reel; 2.3 mm wide; plain; Self-adhesive; white



**Item No.: 210-832**  
Marking strips; on reel; 3 mm wide; plain; Self-adhesive; white



**Item No.: 709-177**  
Marking strips; on reel; 7.5 mm wide; not stretchable; plain; snap-on type; translucent



**Item No.: 709-178**  
Marking strips; on reel; 7.5 mm wide; not stretchable; plain; snap-on type; white

1.1.3 Tool

1.1.3.1 Operating tool



**Item No.: 210-720**  
Operating tool; Blade: 3.5 x 0.5 mm; with a partially insulated shaft; multicoloured



**Item No.: 210-721**  
Operating tool; Blade: 5.5 x 0.8 mm; with a partially insulated shaft; multicoloured