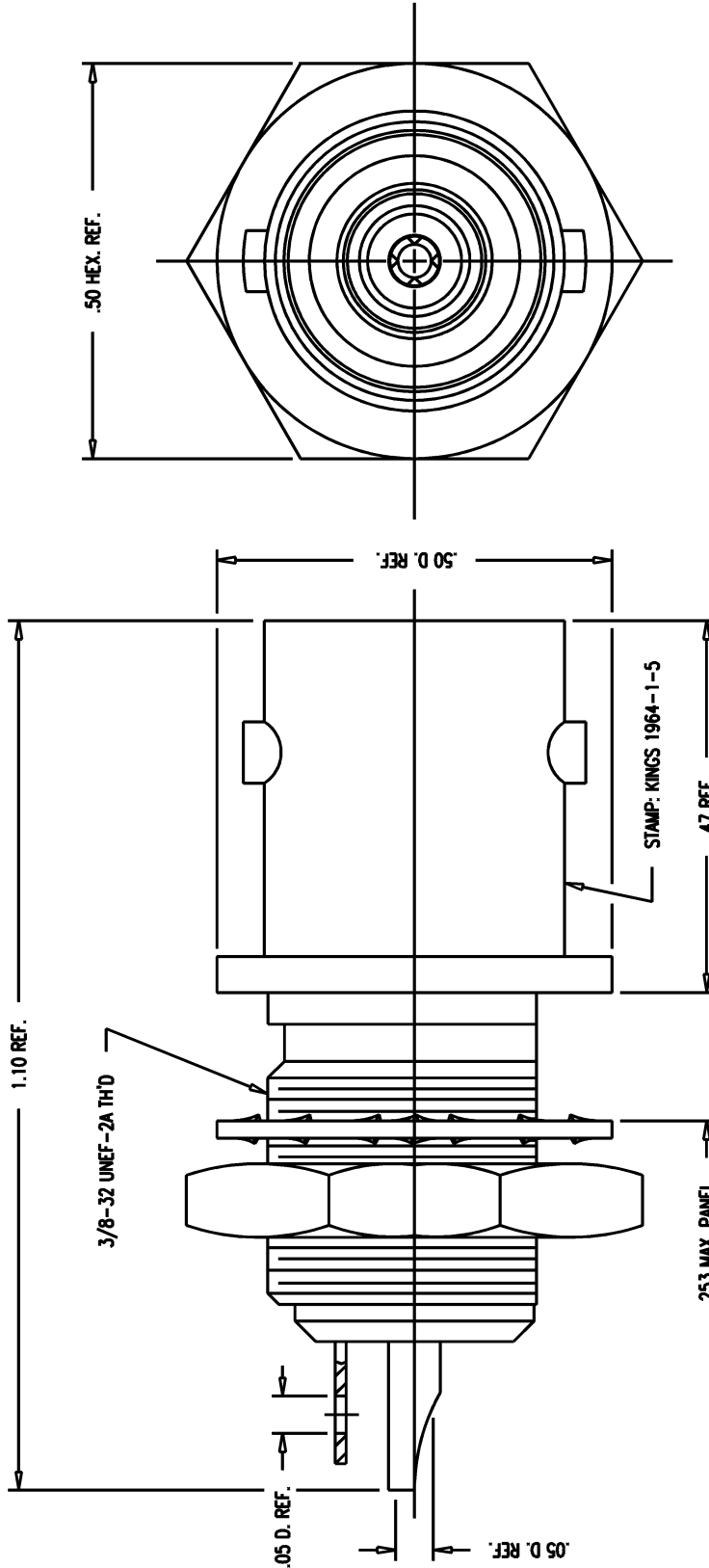
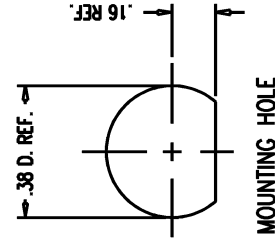


GSD

1964-1-5



- NOTES:
1. INTERFACE PER MIL-STD-348, FIG. 201-2 (AS APPLICABLE).
 2. MATERIALS:
 - INSULATORS: TEFLON, ASTM-D-4894
 - CENTER CONTACT: BER. COPPER, ASTM-B-196
 - LOCKWASHER: PHOSPHOR BRONZE, ASTM-B-103
 - ALL OTHER METAL PARTS: BRASS, ASTM-B16
 3. FINISHES:
 - CENTER CONTACT } HARD GOLD PLATE, PER MIL-G-45204
 - INTER. CONTACT } ALL OTHER METAL PARTS: SILVER PLATE PER QQ-S-365
 4. ELECTRICAL CHARACTERISTICS:
 - WORKING VOLTAGE: 400 VRMS
 - FREQUENCY RANGE: DC TO 500 MHz



GSD

REVISIONS	
ISSUE	CHANGES
0	ER 33592 JCA 01/21/92
1	CN 36666 C KH 11/14/95

JCA2415
SCALE 6:1
APPROX SURFACE AREA
USED ON
REF: ROCKWELL 13489 357-0543-010 REV.E
RECEPTACLE, BULKHEAD, TRB
DRAWN JCA 01/21/92
DESIGN LI 01/21/92
APPR. DATE
KINGS ELECTRONICS CO., INC. TUCKAHOE, NEW YORK 10707
1964-1-5