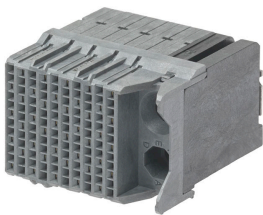




Part Number : [1703405020](#)
Product Description : Impact 85 Ohm Plus 4
Pair, Right-Angle Daughtercard, Right Guided,
10 Columns, 120 Circuits, Plated Through
Hole Dimension 0.39mm, Lead Free
Series Number : 170340
Status : Active
Product Category : Backplane Connectors



Documents & Resources


Drawings
[1703405020_sd.pdf](#)
[PK-70873-610-001.pdf](#)

3D Models and Design Files
[1703405020_stp.zip](#)
[EE-170340-001-001.pdf](#)
[SP-170340-001-001.zip](#)
[SYM-170340-5020-001.zip](#)

Specifications
[AS-76060-990-001.pdf](#)
[PS-170540-999-001.pdf](#)
[PS-45499-002-001.pdf](#)

Product Environment Compliance

Compliance

GADSL/IMDS	Not Relevant
China RoHS	
EU ELV	Not Relevant
Low-Halogen Status	Low-Halogen per IEC 61249-2-21
REACH SVHC	Not Contained per D(2024)7663-DC (21 Jan 2025)
EU RoHS	Compliant per EU 2015/863

Multiple Part Product Compliance Statements
- Eu RoHS
- REACH SVHC

- Low-Halogen

Multiple Part Industry Compliance Documents

- IPC 1752A Class C
- IPC 1752A Class D
- Molex Product Compliance Declaration
- IEC-62474
- chemSHERPA (xml)

EU RoHS Certificate of Compliance

Part Details

General

Status	Active
Category	Backplane Connectors
Series	170340
Description	Impact 85 Ohm Plus 4 Pair, Right-Angle Daughtercard, Right Guided, 10 Columns, 120 Circuits, Plated Through Hole Dimension 0.39mm, Lead Free
Application	Conventional, Coplanar, Daughtercard
Component Type	PCB Receptacle
Product Name	Impact
UPC	887191130712

Agency

UL	E29179
----	--------

Electrical

Current - Maximum per Contact	0.75A
Data Rate	25.0 Gbps
Impedance	85Ω
Shield Type	N/A
Shielded	No
Voltage - Maximum	30V AC (RMS)/DC

Physical

Circuits (Loaded)	120
-------------------	-----

Circuits (maximum)	120
Color - Resin	Gray
Durability (mating cycles max)	200
First Mate / Last Break	No
Flammability	94V-0
Guide to Mating Part	Yes
Keying to Mating Part	None
Material - Metal	High Performance Alloy (HPA)
Material - Plating Mating	Gold
Material - Plating Termination	Tin
Material - Resin	High Temperature Thermoplastic
Net Weight	16.959/g
Number of Columns	10
Number of Pairs	4
Number of Rows	12
Orientation	Right Angle
Packaging Type	Tray
PC Tail Length	1.20mm
PCB Locator	No
PCB Retention	None
PCB Thickness - Recommended	1.00mm
Pitch - Mating Interface	1.35mm, 1.90mm
Pitch - Termination Interface	1.35mm, 1.90mm
Plating min - Mating	0.762µm
Polarized to PCB	No
Stackable	No
Temperature Range - Operating	-55° to +85°C
Termination Interface Style	Through Hole - Compliant Pin

Solder Process Data

Lead-Free Process Capability	N/A
------------------------------	-----

Mates With / Use With

Mates with Part(s)

Description	Part Number
Impact 85 Ohm Plus 4 Pair Vertical Headers	<u>170335</u>

This document was generated on Apr 22, 2025