

MICRO SWITCH

A DIVISION OF MINNEAPOLIS-HONEYWELL REGULATOR COMPANY
FREEPORT, ILLINOIS

FED. MFR. CODE 91929

**ASSEMBLY-
TOGGLE SWITCH**

(M) 6ATI
ISSUE II

6ATI

M

DRAWING
NUMBER

16

ISSUE

16

REPLACES

RELEASE NO.

CHECK

1 OCT 55

CHECK

4 OCT 55

CHECK

22 SEPT 55

CHECK

3 OCT 55

CHECK

3 OCT 55

CHECK

8 OCT 55

CHECK

22 SEPT 55

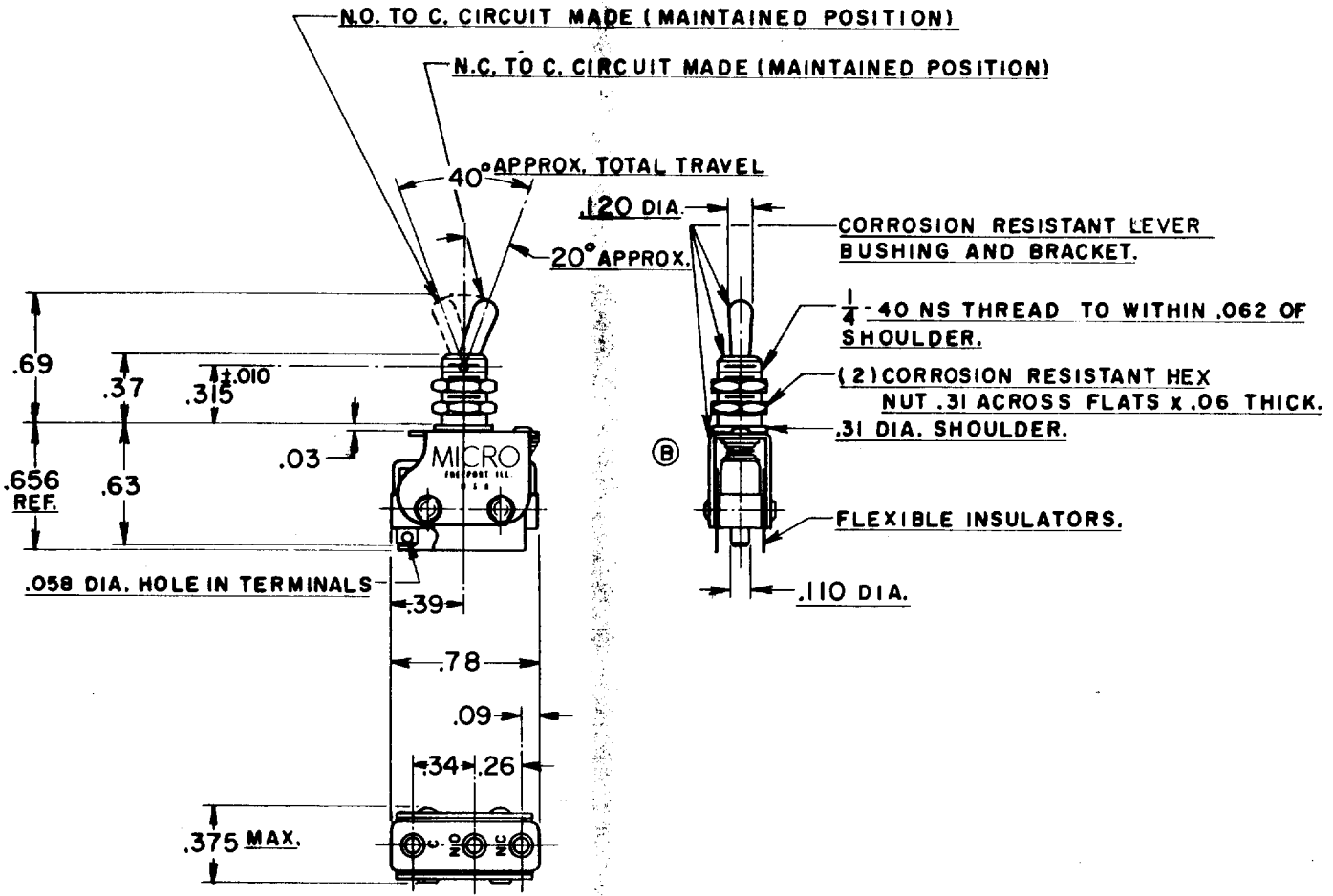
CHECK

22 SEPT 55

CHECK

22 SEPT 55

CHECK



NOTE-
1-UNIT INCLUDES (1) CAT. LIST. 11SM106 BASIC SWITCH,
2-TERMINALS ARE PLATED FOR SOLDERING.

THIS DRAWING COVERS A PROPRIETARY ITEM AND IS THE PROPERTY OF MICRO SWITCH, A DIVISION OF HONEYWELL. THIS DRAWING IS NOT TO BE COPIED OR USED WITHOUT THE APPROVAL OF MICRO SWITCH.

CHARACTERISTICS	ELECTRICAL DATA	SCALE FULL
	CONTACT ARRANGEMENT S. P. D. T.	DO NOT SCALE PRINT
	BREAK DISTANCE .010 MIN.	UNLESS OTHERWISE SPECIFIED DIMENSIONS ARE IN INCHES
	250 VAC ----- 5 AMP	TOLERANCES ARE:
	30 VOLTS DC RATING	ONE PLACE (.0) ±.030
	INDUCTIVE ----- SEA LEVEL ----- 3 AMP	TWO PLACE (.00) ±.015
	50,000 FT. ----- 2.5 AMP	THREE PLACE (.000) ±.005
	RESISTIVE ----- SEA LEVEL ----- 5 AMP	ANGLES ±
	50,000 FT. ----- 5 AMP	
	© MAXIMUM INRUSH ----- 24 AMP	WEIGHT ----- .018 LB.