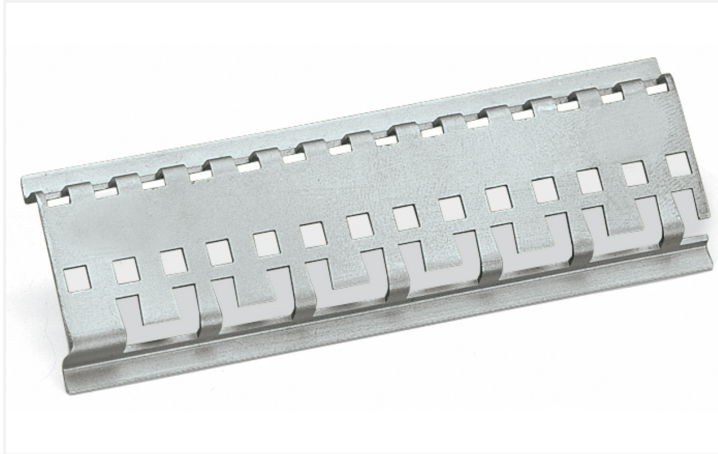


## Data Sheet | Item Number: 790-145

Carrier rail; with special perforations; 1000 mm long; tin-plated; silver-colored

<https://www.wago.com/790-145>



Color: ■ silver-colored

### Physical data

Width	1000 mm / 39.37 inches
-------	------------------------

### Material data

Color	silver-colored
Weight	256 g

### Commercial data

PU (SPU)	1 pcs
Packaging type	Box
Country of origin	IT
GTIN	4045454701109
Customs tariff number	72169180000

### Product Classification

UNSPSC	39121702
eCl@ss 10.0	27-40-06-02
eCl@ss 9.0	27-40-06-02
ETIM 9.0	EC001285
ETIM 10.0	EC001285
ECCN	NO US CLASSIFICATION

**Environmental Product Compliance**

RoHS Compliance Status Compliant, No Exemption

**Downloads**

**Environmental Product Compliance**

Compliance Search	
Environmental Product Compliance 790-145	<a href="#">↓</a>

**Documentation**

Bid Text			
790-145	19.02.2019	xml 2.53 KB	<a href="#">↓</a>
790-145	31.08.2017	doc 23.00 KB	<a href="#">↓</a>

**CAD/CAE-Data**

CAD data	
2D/3D Models 790-145	<a href="#">↓</a>

CAE data	
EPLAN Data Portal 790-145	<a href="#">↓</a>
WSCAD Universe 790-145	<a href="#">↓</a>
ZUKEN Portal 790-145	<a href="#">↓</a>

**1 Compatible Products**

**1.1 Optional Accessories**

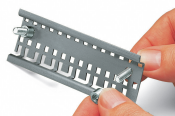
**1.1.1 Shield termination**

**1.1.1.1 Shield termination**



**Item No.: 790-144**  
Stand off; for carrier rail; suitable for M5 size screw; with special perforations

## Installation Notes



Securing a spacer sleeve to a specialty slotted DIN-rail.



Securing an additional shield clamping saddle.



Tightening/removing a shield clamping saddle.



After connection, tighten the knurled screw to complete the installation.  
Recommended tightening torque: 0.5 Nm



To remove the clamping saddle, unscrew until ratcheted mechanism is released, then slightly tip saddle and remove the clamping saddle.