

BL PPC12 1000 - Panel PC



2701336
<https://www.phoenixcontact.com/us/products/2701336>

Please be informed that the data shown in this PDF document is generated from our online catalog. Please find the complete data in the user documentation. Our general terms of use for downloads are valid.



IP65-rated, fanless, 12-inch industrial panel PC (PPC) including resistive touch screen with LED backlight. Energy-efficient Intel® Atom™ processor with 2 GB RAM. Ready for installation of mass storage device.

Product description

The Basicline PPC12 1000 is a 12-inch panel PC with a vibrant LED backlit display. The Intel® Atom™ 1.66 GHz N455 processor offers a seamless balance of processing power and energy efficiency. A fanless design and rich I/O capability make the BL PPC 1000 an industrial panel PC that can be used in a wide variety of applications. The three built-in COM ports enable connection to legacy RS-232 devices. One COM port can also be configured for RS-422 or RS-485 protocols.

Your advantages

- Fanless design
- 3 COM ports
- Embedded operating system support only
- LCD display with resistive touch screen
- IP65 degree of protection (front) IP20 rating (back)
- Energy-efficient Intel® ATOM™ processors

Commercial data

Item number	2701336
Packing unit	1 pc
Note	Made to order (non-returnable)
Sales key	DR12
Product key	DRBABB
Catalog page	Page 124 (C-8-2015)
GTIN	4046356773102
Weight per piece (including packing)	4,318 g
Weight per piece (excluding packing)	4,318 g
Customs tariff number	84714100
Country of origin	TW

BL PPC12 1000 - Panel PC

2701336

<https://www.phoenixcontact.com/us/products/2701336>



Technical data

Notes

Utilization restriction

EMC note	EMC: class A product, see manufacturer's declaration in the download area
----------	---

Product properties

Product type	Panel PC
--------------	----------

Computer data

Processor	Intel® Atom™ N455 1.66 GHz
Operating system	without operating system
Cooling	passive
RAM	2 GB DDR3 SODIMM
Data storage system	without data storage
Slots	without slots
Optical drive	without drive

Display

Display type	30.7 cm/12.1" TFT
Screen resolution	800 x 600 Pixel(s) (SVGA)
Touch technology	analog resistive (polyester)
Display lighting type	LED
Brightness	350 cd/m², typical (adjustable)
MTBF	> 50000 h
Color spectrum	16.2 million colors

Electrical properties

Service life of battery	5 years (typical)
-------------------------	-------------------

Supply

Supply voltage	24 V DC
Supply voltage range	19.2 V DC ... 28.8 V DC
Power supply unit	24 V DC ±20 %

Real-time clock

Realtime clock	Yes (battery-backed)
----------------	----------------------

Supply

Power consumption	typ. 12.5 W
-------------------	-------------

Connection data

Connection method	COMBICON
Conductor cross section, rigid	0.2 mm² ... 2.5 mm²
Conductor cross section, flexible	0.2 mm² ... 2.5 mm²

BL PPC12 1000 - Panel PC



2701336

<https://www.phoenixcontact.com/us/products/2701336>

Conductor cross section AWG	24 ... 12
-----------------------------	-----------

Interfaces

Interfaces	4x USB 2.0
	1x COM (RS-232/422/485)
	2x COM (RS-232)
Network	2x Ethernet (10/100/1000 Mbps), RJ45
LAN chipset	Realtek® 8111D PCI-E
Bus system	without

Dimensions

Width	365 mm
Height	282 mm
Depth	55 mm

External dimensions

Width / Height / Depth	365 mm / 282 mm / 55 mm
------------------------	-------------------------

Installation dimensions

Width / Height / Installation depth	334 mm / 253 mm / (Installation cutout)
-------------------------------------	---

Environmental and real-life conditions

Ambient conditions

Degree of protection	IP65 (front), IP20 (back)
Ambient temperature (operation)	0 °C ... 50 °C
Ambient temperature (storage/transport)	-40 °C ... 70 °C
Permissible humidity (operation)	5 % ... 95 % (non-condensing)
Permissible humidity (storage/transport)	5 % ... 95 % (non-condensing)
Shock	15g, 11 ms in accordance with IEC 60068-2-27
Vibration (operation)	DIN EN 60068-2-6

Mounting

Mounting type	Panel cutout
---------------	--------------

BL PPC12 1000 - Panel PC

2701336

<https://www.phoenixcontact.com/us/products/2701336>



Classifications

ECLASS

ECLASS-11.0	19200103
-------------	----------

BL PPC12 1000 - Panel PC

2701336

<https://www.phoenixcontact.com/us/products/2701336>



Environmental product compliance

China RoHS	Environmentally Friendly Use Period = 10;
	For information on hazardous substances, refer to the manufacturer's declaration available under "Downloads"

BL PPC12 1000 - Panel PC



2701336

<https://www.phoenixcontact.com/us/products/2701336>

Accessories

VL 1 GB CF - Memory card

2913155

<https://www.phoenixcontact.com/us/products/2913155>

CompactFlash® card, pluggable, 1 GB



VL 2 GB CF - Memory card

2913156

<https://www.phoenixcontact.com/us/products/2913156>

CompactFlash® card, pluggable, 2 GB



BL PPC12 1000 - Panel PC

2701336

<https://www.phoenixcontact.com/us/products/2701336>



VL 4 GB CF - Memory card

2913157

<https://www.phoenixcontact.com/us/products/2913157>

CompactFlash® card, pluggable, 4 GB



VL 8 GB CF - Memory

2913158

<https://www.phoenixcontact.com/us/products/2913158>

CompactFlash® card, pluggable, 8 GB



BL PPC12 1000 - Panel PC

2701336

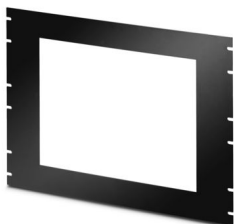
<https://www.phoenixcontact.com/us/products/2701336>



VL PPC12 19" RACKMOUNT PLATE - Mounting panel

2701716

<https://www.phoenixcontact.com/us/products/2701716>



Allows 12" Baseline and Valueline PPC and 12" FPM products to be fitted into a 19" rack-mount cabinet using standard PPC mounting procedures.

16GB CF - Memory card

2701668

<https://www.phoenixcontact.com/us/products/2701668>



CompactFlash[®] card, can be plugged in, 16 Gbyte

BL PPC12 1000 - Panel PC

2701336

<https://www.phoenixcontact.com/us/products/2701336>



32GB CF - Memory card

2701669

<https://www.phoenixcontact.com/us/products/2701669>

CompactFlash® card, can be plugged in, 32 Gbyte



BL PPC 1000 16 GB SSD KIT - Memory

2400073

<https://www.phoenixcontact.com/us/products/2400073>

16 GB, 2.5" SATA solid-state drive kit for Basicline PPC 1000. Includes tray.



BL PPC12 1000 - Panel PC

2701336

<https://www.phoenixcontact.com/us/products/2701336>



BL PPC 1000 32 GB SSD KIT - Memory

2400074

<https://www.phoenixcontact.com/us/products/2400074>

32 GB, 2.5" SATA solid-state drive kit for Basicline PPC 1000. Includes tray.



BL PPC 1000 320 GB HDD KIT - Memory

2400078

<https://www.phoenixcontact.com/us/products/2400078>

320 GB, 2.5" SATA hard-disc drive kit for Basicline PPC 1000. Includes tray.



BL PPC12 1000 - Panel PC

2701336

<https://www.phoenixcontact.com/us/products/2701336>



PC-PWR-FLTR-2 - Buffer module

2402941

<https://www.phoenixcontact.com/us/products/2402941>



The PC-PWR-FLTR-2 buffers incoming power until operating voltage is reached. For use with 24 V DC power sources with ascend times over 100 ms 7 A max.

CUC-V06-F1PGY-UBA/UBBB - Panel mounting frames

1411904

<https://www.phoenixcontact.com/us/products/1411904>



USB socket insert, 4-pos., USB socket type A to USB socket type B, socket type A to panel mounting frame side, for the Freenet system in the panel mounting frame, IP20 terminal outlet, 19" patch panel, and service interface

BL PPC12 1000 - Panel PC

2701336

<https://www.phoenixcontact.com/us/products/2701336>



VS-04-C-SDA/SDB/1,8 - USB cable

1405578

<https://www.phoenixcontact.com/us/products/1405578>



USB cable, with USB connectors at both ends, assembled connector type: A on B, length:1.8 m

VS-08-SD-F - Protective cover

1652606

<https://www.phoenixcontact.com/us/products/1652606>



Protective cover, IP67, flat design, to cover the contact insert in the panel mounting frame, color: gray

BL PPC12 1000 - Panel PC

2701336

<https://www.phoenixcontact.com/us/products/2701336>



TOUCH PEN - Touch pen

2701379

<https://www.phoenixcontact.com/us/products/2701379>

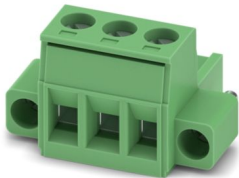


Touch pen for analog-resistive HMI, silver coated. Delivery includes self-adhesive pen holder.

MSTB 2,5/ 3-STF - PCB connector

1786844

<https://www.phoenixcontact.com/us/products/1786844>



PCB connector, nominal cross section: 2.5 mm², color: green, nominal current: 12 A, rated voltage (III/2): 320 V, contact surface: Tin, contact connection type: Socket, number of potentials: 3, number of rows: 1, number of positions: 3, number of connections: 3, product range: MSTB 2,5/...-STF, pitch: 5 mm, connection method: Screw connection with tension sleeve, screw head form: L Slotted, conductor/PCB connection direction: 0 °, locking clip: - without locking clip, plug-in system: COMBICON MSTB 2,5, locking: Screw locking mechanism, mounting: Screw flange, type of packaging: packed in cardboard

Phoenix Contact 2024 © - all rights reserved
<https://www.phoenixcontact.com>

Phoenix Contact USA
586 Fulling Mill Road
Middletown, PA 17057, United States
(+717) 944-1300
info@phoenixcon.com