


U.I. Lapp GmbH	PRODUCT INFORMATION	
	EPIC® H-DD 24	14.11.2013

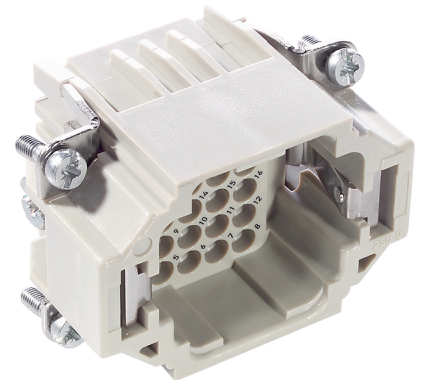
The H-DD series with machined crimp contacts - for a high number of pin in very tight spaces.
The H-DD series with machined contacts is designed for a high number of pins in very tight spaces. This allows for smaller housing types to be chosen.



Industrial machinery and plant engineering



Space requirement



Info

Highest packing density for compact connectors

Application range

Mechanical engineering
Light & sound technology
Plastics industry


Remark

Photographs are not to scale and do not represent detailed images of the respective products.

Technical Data


Rated voltage (V):	IEC: 250 V UL: 600 V CSA: 600 V
Rated impulse voltage:	2.5 kV
Rated current (A):	IEC: 10 A UL: 8.5 A CSA: 10 A
Contact resistance:	< 3 mOhm
Contacts:	Copper alloy, hard silver/gold-plated
Number of contacts:	24 + PE
Termination methods:	Crimp termination: 0.14 - 2.5 mm ²
Cycle of mechanical operation:	100
Temperature range:	-40 °C to +100 °C, short-term up to +125 °C
VDE-tested:	Certified production control: VDE-REG. no.: B437 UL-tested: UL File Number: E75770
Degree of soiling:	2

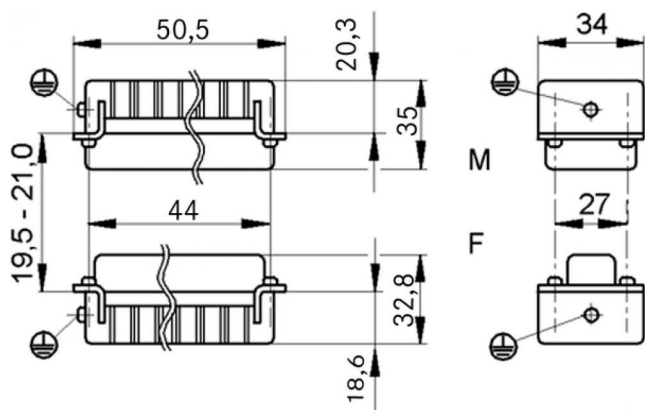
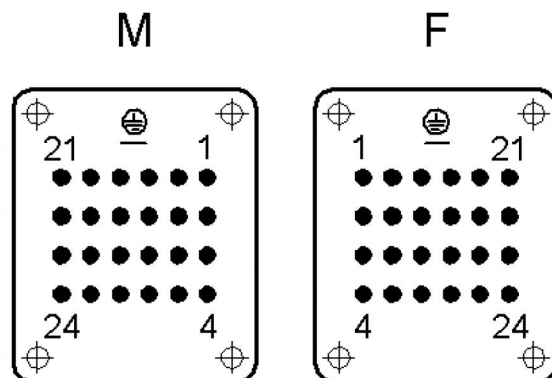
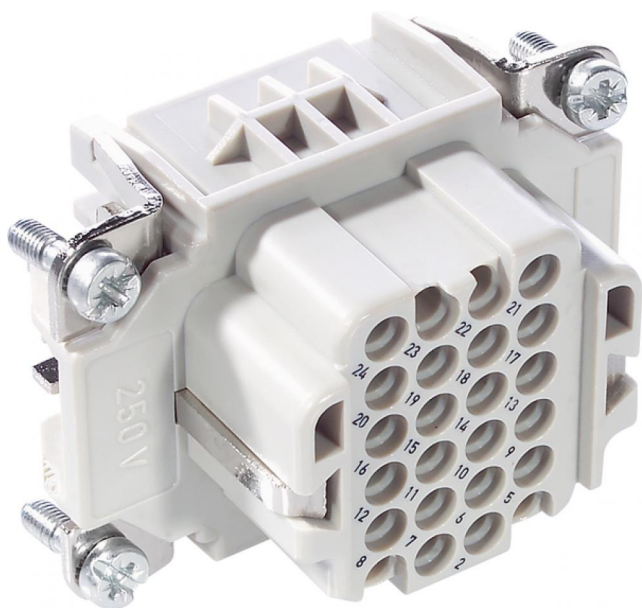
Product Management	Document: LAPP_PRO672EN.pdf	1 / 3
--------------------	-----------------------------	-------

U.I. Lapp GmbH	PRODUCT INFORMATION	 LAPP GROUP
	EPIC® H-DD 24	14.11.2013

Part number	Article	Version	Article designation	Contacts	Pieces / PU
H-DD 24 crimp termination					
11285000	H-DD 24 SCM	male	machined	1 - 24	5
11286000	H-DD 24 BCM	female	machined	1 - 24	5

Product Management	Document: LAPP_PRO672EN.pdf	2 / 3
--------------------	-----------------------------	-------

U.I. Lapp GmbH	PRODUCT INFORMATION	
	EPIC® H-DD 24	14.11.2013



Product Management	Document: LAPP_PRO672EN.pdf	3 / 3
--------------------	-----------------------------	-------