

# Contact insert - HC-HS06-I-UT-F 7-12



1406533

<https://www.phoenixcontact.com/us/products/1406533>

Please be informed that the data shown in this PDF document is generated from our Online Catalog. Please find the complete data in the user documentation. Our General Terms of Use for Downloads are valid.

HEAVYCON female insert, HS6 series, screw connection, numbering from 7-12



## Your advantages

- For fast coding with plastic profile<br/>

## Commercial Data

Item number	1406533
Packing unit	1 pc
Minimum order quantity	1 pc
Note	Made to Order (non-returnable)
Sales Key	B10
Product Key	BF7ABI
Catalog Page	Page 563 (C-2-2019)
GTIN	4046356921367
Weight per Piece (including packing)	95.92 g
Weight per Piece (excluding packing)	95 g
Customs tariff number	85366990
Country of origin	CN

# Contact insert - HC-HS06-I-UT-F 7-12



1406533

<https://www.phoenixcontact.com/us/products/1406533>

## Technical Data

### Notes

General	For HEAVYCON housing B16 and B32
General	Connectors may be operated only when there is no load/voltage.

### Product properties

Type	B16 B32
Product type	Contact insert with a fixed no. of positions
Number of positions	6
Connection profile	6+PE
Application	Power
Contact type	turned
Series	HC-HS

### Insulation characteristics

Overvoltage category	III
Degree of pollution	3

### Connection data

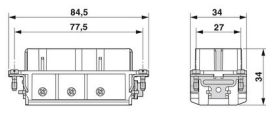
#### Connection technology

Connection technology	Screw connection
Connection in acc. with standard	IEC / EN

#### Conductor connection

Conductor cross section	0.5 mm <sup>2</sup> ... 6 mm <sup>2</sup> (power contacts)
Connection cross section AWG	20 ... 10
Tightening torque	0.8 Nm ... 1.2 Nm (PE connection) 0.5 Nm ... 0.8 Nm (Mounting screws for mounting in the HEAVYCON housing)
Tightening torque	1.2 Nm
Stripping length of the individual wire	10 mm

### Dimensions

Dimensional drawing	
Width	34 mm
Height	34 mm
Length	84.5 mm
Drill hole distance, horizontal	77.5 mm
Drill hole distance, vertical	27 mm

# Contact insert - HC-HS06-I-UT-F 7-12



1406533

<https://www.phoenixcontact.com/us/products/1406533>

## Mechanical characteristics

Contact diameter	3.5 mm
------------------	--------

## Electrical properties

Rated voltage (III/3)	400 V (Conductor-PE)
	690 V (Conductor-Conductor)
Rated voltage for power contacts	400/690 V
Rated surge voltage	6 kV (power contacts)
Rated current	41 A (power contacts)
SCCR	5 kA (UL 2237)

## Material specifications

Flammability rating according to UL 94	V0
Contact material	Copper alloy
Contact surface material	Ag
Contact carrier material	PC
Standards/regulations	PC: Fire protection in rail vehicles - requirement sets R22, R23, and R24 acc. to DIN EN 45545-2 (Risk level HL1 - HL3)

## Connector

Insertion/withdrawal cycles	≥ 500
-----------------------------	-------

## Cable / line

Stripping length of the individual wire	10 mm
---	-------

## Mounting

Assembly instructions	To ensure correct use, installation in housing with IP54 protection or better is required
-----------------------	---

## Ambient conditions

Ambient temperature (operation)	-40 °C ... 125 °C (including heating up of contacts)
---------------------------------	--

## Standards and regulations

### Testing

Standards/regulations	PC: Fire protection in rail vehicles - requirement sets R22, R23, and R24 acc. to DIN EN 45545-2 (Risk level HL1 - HL3)
-----------------------	---

# Contact insert - HC-HS06-I-UT-F 7-12

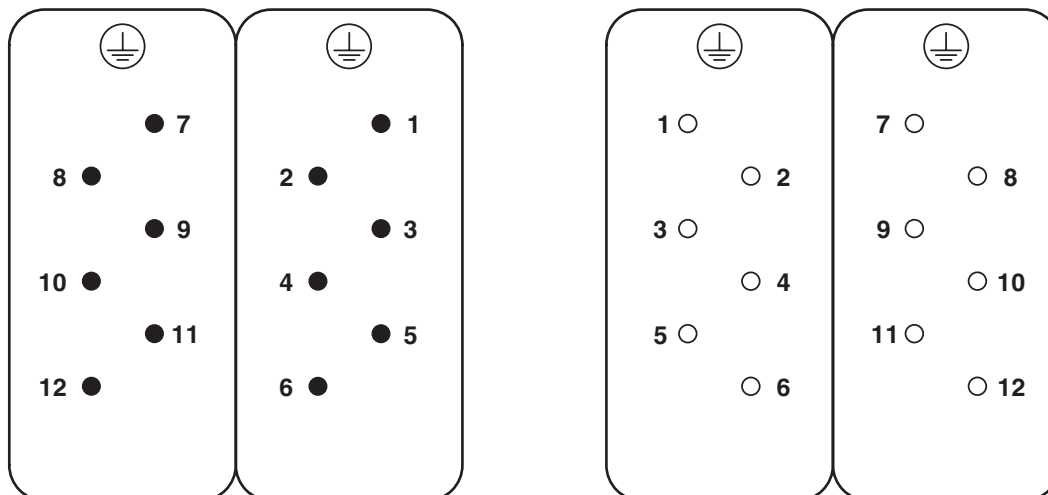


1406533

<https://www.phoenixcontact.com/us/products/1406533>

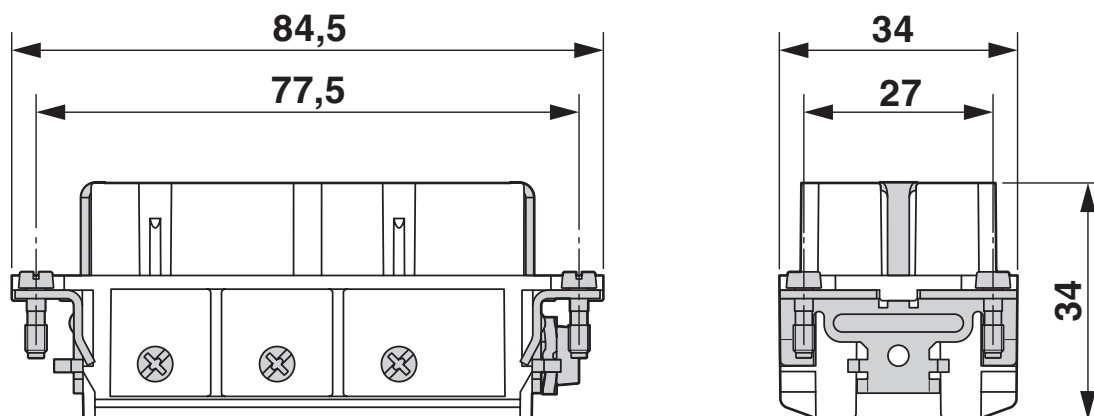
## Drawings

Schematic diagram



Connector pin assignment, connection side

Dimensional drawing

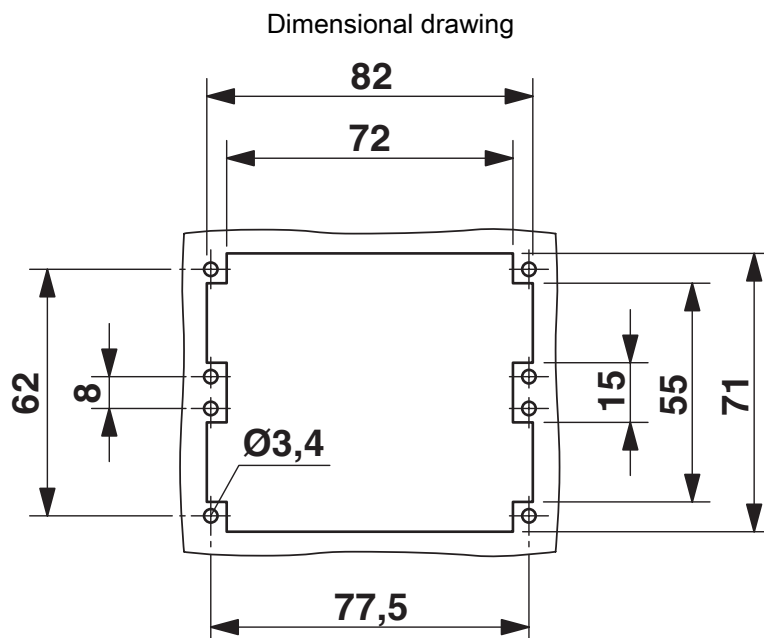


Female insert

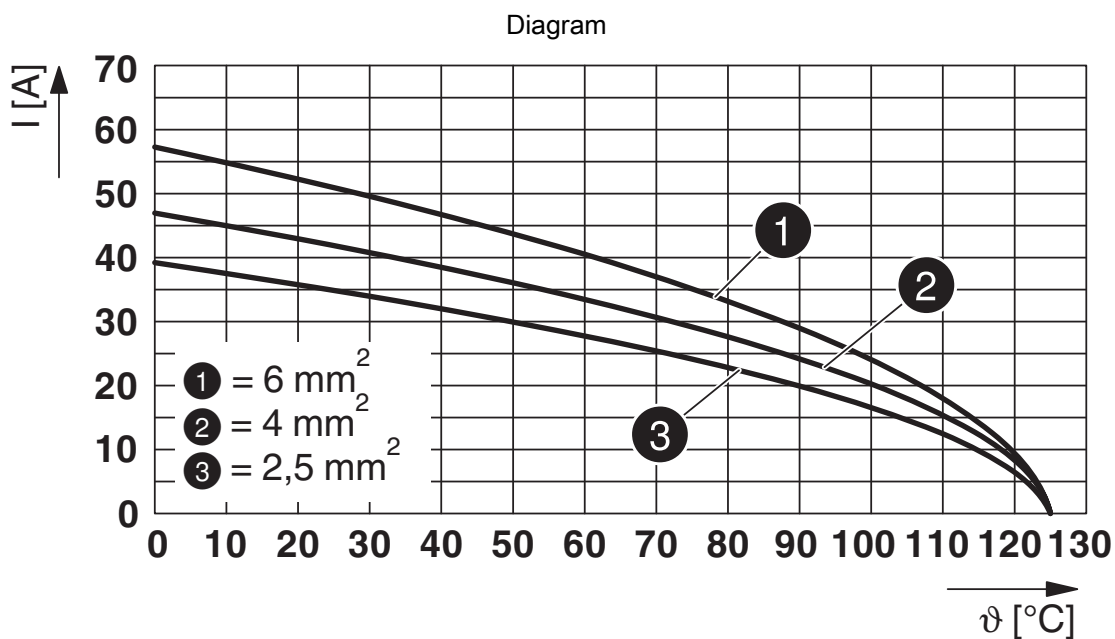
# Contact insert - HC-HS06-I-UT-F 7-12

1406533

<https://www.phoenixcontact.com/us/products/1406533>



Mounting cutout when used without housing



Derating diagram

# Contact insert - HC-HS06-I-UT-F 7-12



1406533

<https://www.phoenixcontact.com/us/products/1406533>

## Approvals

### DNV

Approval ID: TAE000037S



### CSA

Approval ID: 013631\_0\_000

	Nominal Voltage $U_N$	Nominal Current $I_N$	Cross Section AWG	Cross Section $\text{mm}^2$
	600 V	32 A	- 10	-



### UL Recognized

Approval ID: FILE E 118976

	Nominal Voltage $U_N$	Nominal Current $I_N$	Cross Section AWG	Cross Section $\text{mm}^2$
	600 V	35 A	-	-



### EAC

Approval ID: RU C-DE.AI30.B.01102



### UL Recognized

Approval ID: E468743

	Nominal Voltage $U_N$	Nominal Current $I_N$	Cross Section AWG	Cross Section $\text{mm}^2$
	600 V	35 A	-	-



### EAC

Approval ID: RU C-DE.BL08.B.00511

# Contact insert - HC-HS06-I-UT-F 7-12



1406533

<https://www.phoenixcontact.com/us/products/1406533>

## Classifications

### ECLASS

ECLASS-9.0	27440205
ECLASS-10.0.1	27440205
ECLASS-11.0	27440205

### ETIM

ETIM 8.0	EC000438
----------	----------

### UNSPSC

UNSPSC 21.0	39121500
-------------	----------

# Contact insert - HC-HS06-I-UT-F 7-12



1406533

<https://www.phoenixcontact.com/us/products/1406533>

## Environmental Product Compliance

REACH SVHC	Lead 7439-92-1
China RoHS	Environmentally Friendly Use Period = 50 years
	For information on hazardous substances, refer to the manufacturer's declaration available under "Downloads"



# Contact insert - HC-HS06-I-UT-F 7-12

1406533

<https://www.phoenixcontact.com/us/products/1406533>



## Accessories

### Coding profile

Coding profile - CP-HC - 1686478

<https://www.phoenixcontact.com/us/products/1686478>



Coding profile, 4 coding profiles per strip, for insertion in coding keyways

---

### Coding bolt

Coding bolt - HC-CB - 1772722

<https://www.phoenixcontact.com/us/products/1772722>



Coding pin, prevents mismatching of up to six connectors with an identical number of positions

# Contact insert - HC-HS06-I-UT-F 7-12

1406533

<https://www.phoenixcontact.com/us/products/1406533>



## Coding element

Coding element - HC-CST - 1676857

<https://www.phoenixcontact.com/us/products/1676857>



Coding peg for coding up to 16 connectors

---

## Coding element

Coding element - HC-CBU - 1676860

<https://www.phoenixcontact.com/us/products/1676860>



Coding socket for coding up to 16 connectors

# Contact insert - HC-HS06-I-UT-F 7-12



1406533

<https://www.phoenixcontact.com/us/products/1406533>

## Adapter

Adapter - HC-B-PE-PT - 1054672

<https://www.phoenixcontact.com/us/products/1054672>



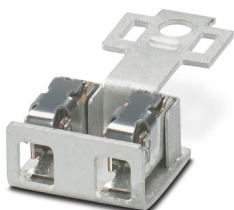
PE adapter with PT connection, for 1 PE connection, for HC-B / HC-BB / HC-DD / HC-D40 / HC-D64 contact inserts

---

## PE multiplier

PE multiplier - HC-B-2PE-PT - 1054675

<https://www.phoenixcontact.com/us/products/1054675>



PE adapter with PT connection, for 2 PE connections, for HC-B / HC-BB / HC-DD / HC-D40 / HC-D64 contact inserts

# Contact insert - HC-HS06-I-UT-F 7-12

1406533

<https://www.phoenixcontact.com/us/products/1406533>



## Screw

Screw - HC-HS-PES - 1586219

<https://www.phoenixcontact.com/us/products/1586219>



PE screw, for HC-HS contact inserts

---

## DIN rail mounting frame

DIN rail mounting frame - HC-CIF-B16-HFWL-PL - 1424336

<https://www.phoenixcontact.com/us/products/1424336>



DIN rail mounting frame, type: B16, for contact inserts, Top frame

# Contact insert - HC-HS06-I-UT-F 7-12

1406533

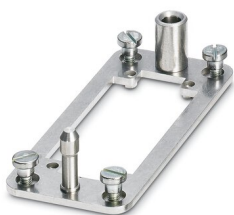
<https://www.phoenixcontact.com/us/products/1406533>



## Docking frames

Docking frames - HC-B 16-ANDOCK - 1586138

<https://www.phoenixcontact.com/us/products/1586138>



Docking frame for racks, for contact inserts of B16 type, with four M5 flat headed screws, rack balance x/y axis  $\pm 1.5$  mm

---

## DIN rail mounting frame

DIN rail mounting frame - HC-CIF-B06-24-BFAFL-PL - 1424338

<https://www.phoenixcontact.com/us/products/1424338>



DIN rail mounting frame, type: B6 - B24, for contact inserts, Base frame

# Contact insert - HC-HS06-I-UT-F 7-12

1406533

<https://www.phoenixcontact.com/us/products/1406533>



## Adapter plate

Adapter plate - HC-B24/16-ADP-SS - 1034216

<https://www.phoenixcontact.com/us/products/1034216>

Adapter plate, type: B24 to B16



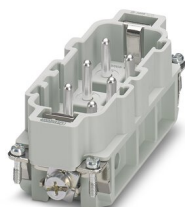
---

## Contact insert

Contact insert - HC-HS06-I-UT-M 7-12 - 1406534

<https://www.phoenixcontact.com/us/products/1406534>

HEAVYCON male insert, HS6 series, screw connection, numbering from 7-12



---

Phoenix Contact 2022 © - all rights reserved  
<https://www.phoenixcontact.com>

Phoenix Contact USA  
586 Fulling Mill Road  
Middletown, PA 17057, United States  
(+717) 944-1300  
[info@phoenixcon.com](mailto:info@phoenixcon.com)