



Search by part # or keyword

Products

Industries & Solutions

Resources

TE Store

Sign In



1410965-2

MULTIGIG RT T2 .8" BP FULL CNT



MULTIGIG RT | MULTIGIG RT 2

TE Internal #: **1410965-2**

TE Internal Description: **MULTIGIG RT T2 .8" BP FULL CNT**

Connector System : **Board-to-Board**

Number of Positions : **144**

Row-to-Row Spacing : **.071 mm [1.8 in]**

Mating Alignment : **With**

Mating Alignment Type : **Polarization**

[Similar Products](#) | [Digital Datasheet](#)

Compatible Parts & Tooling

We are here to help!

Get in touch with our product experts.



CHAT WITH US



EMAIL US



CALL US

Feedback

Documents

Features

Product Compliance

Product Drawings

MULTIGIG RT T2 .8" BP FULL CNT

[MULTIGIG RT T2 .8" BP FULL CNT](#) English

CAD Files

Customer View Model

[ENG_CVM_CVM_1410965-2_B.3d_igs.zip](#)

English

Customer View Model

[ENG_CVM_CVM_1410965-2_B.3d_stp.zip](#)

English

3D PDF

[3D_CVM_CVM_1410965-2_B.pdf](#) 3D

Customer View Model

[ENG_CVM_CVM_1410965-2_B.2d_dxf.zip](#)

English

Datasheets & Catalog Pages

Board-Level Interconnects for Rugged Embedded Computing Brochure

[ENG_DS_4-1773700-7_embedded-computing_0917.pdf](#) English

Product Specifications

Application Specification

[ENG_SS_114-13056_J.pdf](#) English

[ENG_SS_114-163004_B.pdf](#) English

Product Specification

Please review product documents or [contact us](#) for the latest agency approval information. Please Note: Use the Product Drawing for all design activity.

Product Type Features Connector System : **Board-to-Board**
 Connector Style : **Receptacle**
 Shrouded : **Unshrouded**
 Connector & Contact Terminates To : **Printed Circuit Board**

Configuration Features Number of Positions : **144**
 Number of Rows : **9**
 Number of Columns : **16**
 Board-to-Board Configuration : **Vertical**
 PCB Mount Orientation : **Vertical**
 Guide Location : **Center**

Contact Features Contact Current Rating (Max) (A): **1**

Mechanical Attachment Mating Alignment : **With**
 Mating Alignment Type : **Polarization**
 Connector Mounting Type : **Board Mount**

Housing Features Centerline (Pitch) : **1.8 mm [.071 in]**

Dimensions Row-to-Row Spacing : **.071 mm [1.8 in]**

Usage Conditions Operating Temperature Range : **-55 – 105 °C [-67 – 221 °F]**

Operation/Application Circuit Application : **Power & Signal**

EU RoHS Directive 2011/65/EU

This declaration covers EU Directive 2011/65/EU incl. Delegated Directive 2015/863/EU. The restrictions under 2015/863/EU apply as of 22 July 2021 for EEE categories 8 (medical devices) and 9 (monitoring and control equipment).

EU ELV Directive 2000/53/EC

China RoHS 2 Directive MIIT Order No 32, 2016

EU REACH Regulation (EC) Current ECHA Candidate List: **JUL 2019 (201)**
 Declared Against: **JAN 2018 (181)**



No. 1907/2006

Halogen Content

Solder Process Capability

Not applicable for solder process capability

Statement of Compliance

[Statement of Compliance pdf](#)

Compliance Documents

There may be Environmental Compliance related documents on the [DOCUMENTATION Tab](#)

Disclaimer

This information is provided based on reasonable inquiry of our suppliers and represents our current actual knowledge based on the information they provided. This information is subject to change. The part numbers that TE has identified as EU RoHS compliant have a maximum concentration of 0.1% by weight in homogenous materials for lead, hexavalent chromium, mercury, PBB, PBDE, DBP, BBP, DEHP, DIBP, and 0.01% for cadmium, or qualify for an exemption to these limits as defined in the Annexes of Directive 2011/65/EU (RoHS2). Finished electrical and electronic equipment products will be CE marked as required by Directive 2011/65/EU. Components may not be CE marked. Additionally, the part numbers that TE has identified as EU ELV compliant have a maximum concentration of 0.1% by weight in homogenous materials for lead, hexavalent chromium, and mercury, and 0.01% for cadmium, or qualify for an exemption to these limits as defined in the Annexes of Directive 2000/53/EC (ELV). Regarding the REACH Regulation, the information TE provides on SVHC in articles for this part number is based on the latest European Chemicals Agency (ECHA) 'Guidance on requirements for substances in articles' posted at this URL: <https://echa.europa.eu/guidance-documents/guidance-on-reach>

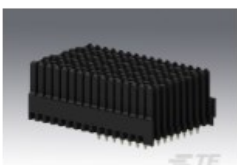
Products with Similar Specs

[View All Similar Products](#)

THIS PRODUCT

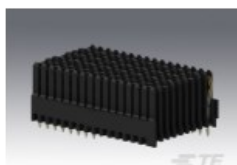
TOP RESULTS

HIGH SPEED BACKPLANE CONNECTORS
1410965-2
MULTIGIG RT T2 .8" BP FULL CNT



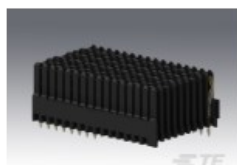


HIGH SPEED BACKPLANE CONNECTORS
1410966-2
MULTIGIG RT T2 .8" BP FULL CNT





HIGH SPEED BACKPLANE CONNECTORS
1410966-1
MULTIGIG RT T2 .8" BP FULL CNTR
RTM SEL





HIGH SPEED BACKPLANE CONNECTORS
1410965-1
MULTIGIG RT T2 .8" BP FULL CNT





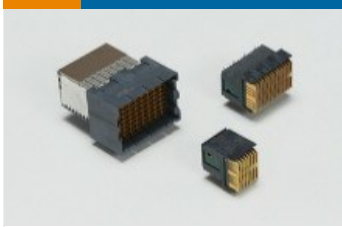
Connector System : **Board-to-Board**
Number of Positions : **144**
Row-to-Row Spacing : **.071 mm**
Mating Alignment : **With**
Mating Alignment Type : **Polarization**

Connector System : **Board-to-Board**
Number of Positions : **144**
Row-to-Row Spacing : **.071 mm**
Mating Alignment : **With**
Mating Alignment Type : **Polarization**

Connector System : **Board-to-Board**
Number of Positions : **144**
Row-to-Row Spacing : **.071 mm**
Mating Alignment : **With**
Mating Alignment Type : **Polarization**

Connector System : **Board-to-Board**
Number of Positions : **144**
Row-to-Row Spacing : **.071 mm**
Mating Alignment : **With**
Mating Alignment Type : **Polarization**

Also in the Series | [MULTIGIG RT 2](#)



High Speed Backplane Connectors (41)

[ABOUT TE CONNECTIVITY](#)

[FOR PARTNERS](#)

[SUPPORT](#)

[CALL US](#)

[LIVE CHAT](#)

[UNITED STATES \(EN\)](#)