



[Aluminium enclosures](#)  
[Plastic enclosures](#)

**With flanges**  
[DIN rail](#)  
[Hand-held](#)  
[Sealed](#)  
[Desktop](#)  
[Electronic](#)  
[19 inch rack](#)

[Accessories for enclosures](#)



#### The selection of enclosures

Selection of necessary enclosures for electronics on the size and main characteristics

AEK GmbH –  
Electrical  
Enclosures, 60322,  
Deutschland,  
Frankfurt am Main,  
Falkensteiner str 77



# G2385CMF-IP67

[Enclosures](#) / [Plastic](#) / [Plastic box with flanges](#) / [G2xxCMF](#) / [G2385CMF-IP67](#)

## Sealed enclosure with clear lid

G2385CMF-IP67 – Sealed enclosure with clear lid light gray color with flanges for wall mounting or mounting on a place of installation, production is made of polycarbonate. Provides protection against dust and moisture according to the standard IP67. The package includes a transparent cover. Overall dimensions are: length 265mm, width 185mm, height 95mm. On the inner surface of the case cast stand for horizontal PCB mounting.

**Price per box — € 23.64**

1+

**Price per box — on request**

100+

PN: G2385CMF-IP67

Packing: 16

### Datasheet

Technical documentation in PDF format



[G2385CMF-IP67, PDF-file - 202.497K6](#)

Quickly view [G2385CMF-IP67 PDF online](#) with Google Docs Viewer.

### Characteristics

Dimensions, mm	265x185x95
Material	Polycarbonate
Color	Light gray
Cover	Clear
PCB mounting	Horizontally, the racks
Waterproof	Yes
Ingress Protection Rating	IP67

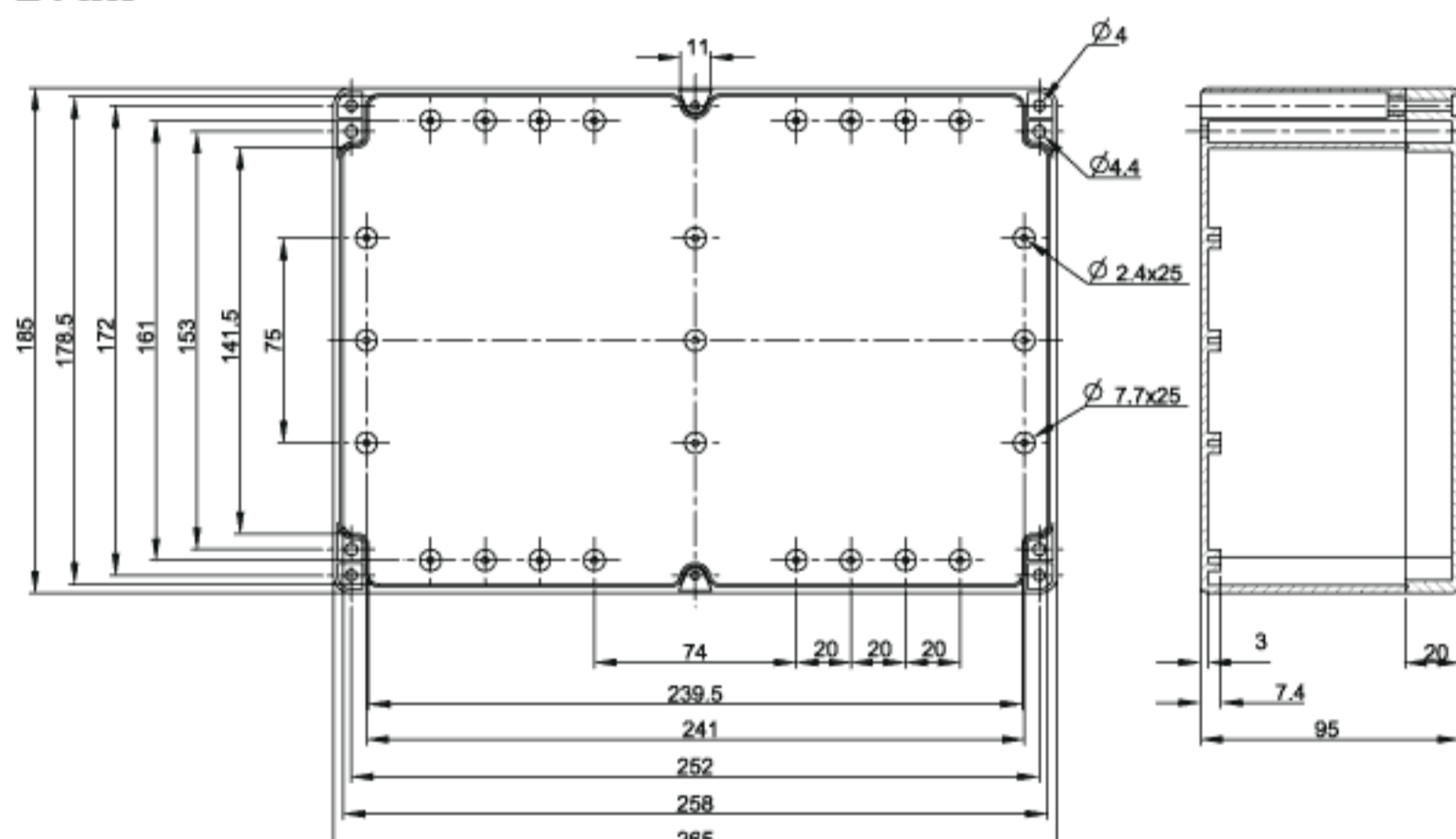
### series G2xxCMF

Sealed enclosure with the flanges and transparent cover

- [G200CMF](#)
- [G201CMF](#)
- [G203CMF](#)
- [G205CMF](#)
- [G212CMF](#)
- [G218CMF](#)
- [G221CMF](#)
- [G223CMF](#)
- [G232CMF](#)
- [G250CMF](#)
- [G256CMF](#)
- [G258CMF](#)
- [G265CMF](#)
- [G278CMF](#)
- [G279CMF](#)
- [G2691CMF-IP67](#)
- [G2385CMF-IP67](#)
- [G200CMF-IP67](#)
- [G201CMF-IP67](#)
- [G203CMF-IP67](#)
- [G205CMF-IP67](#)
- [G212CMF-IP67](#)
- [G214CMF-IP67](#)
- [G218CMF-IP67](#)
- [G221CMF-IP67](#)
- [G223CMF-IP67](#)
- [G232CMF-IP67](#)
- [G250CMF-IP67](#)
- [G256CMF-IP67](#)
- [G258CMF-IP67](#)
- [G265CMF-IP67](#)
- [G278CMF-IP67](#)
- [G279CMF-IP67](#)
- [P200CMF-IP68](#)
- [P201CMF-IP68](#)
- [P203CMF-IP68](#)
- [P205CMF-IP68](#)
- [P212CMF-IP68](#)
- [P214CMF-IP68](#)
- [P218CMF-IP68](#)
- [P221CMF-IP68](#)
- [P223CMF-IP68](#)
- [P232CMF-IP68](#)
- [P250CMF-IP68](#)
- [P256CMF-IP68](#)
- [P258CMF-IP68](#)
- [P265CMF-IP68](#)
- [P278CMF-IP68](#)
- [P279CMF-IP68](#)
- [P2385CMF-IP68](#)
- [P2691CMF-IP68](#)
- [G214CMF](#)
- [G2393CMF](#)
- [G2393CMF-IP67](#)
- [P2393CMF-IP68](#)

Sealed enclosure with the flanges and transparent cover is made of polycarbonate. The base is equipped with mounting flange for durable attachment. Provides protection against dust and moisture according to the IP65 (IEC 529) and NEMA 4 standard.

### Draw



G238/G378

### Electrical Enclosures



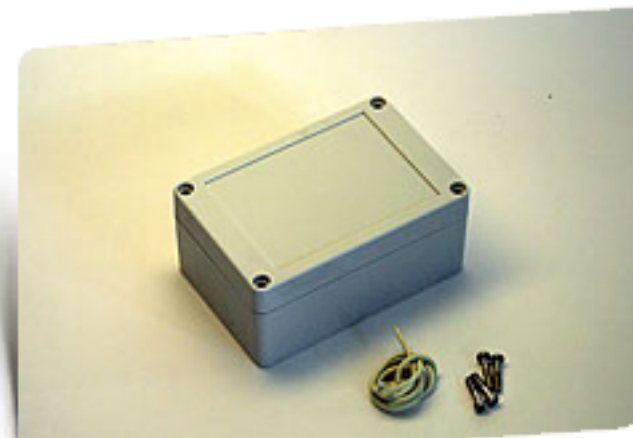
#### HQ027S

**Sealed enclosure**, production is made of aluminum alloy ADC-12, finishing surface of natural aluminum color, ingress protection rating IP67.



#### G404

**Plastic enclosure**, production is made of high impact ABS plastic UL94-V0, finishing surface of dark gray color, ingress protection rating IP54.



#### G2104

**Sealed enclosure**, production is made of polycarbonate, finishing surface of light gray color, ingress protection rating IP65.