

# AKPB002012102R2TA2

Search by :

[Part Number](#)
[Characteristics](#)
[Cross reference](#)

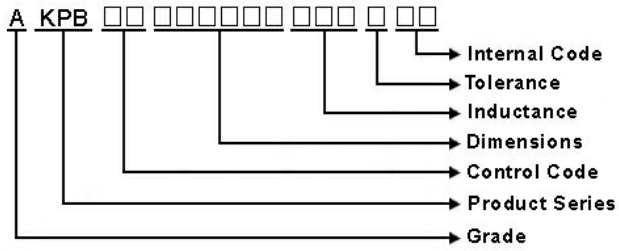
[MP](#) [Auto](#) [?](#)

Closed Magnetic Circuit Type  
Multilayer

[Series Pdf](#)
[RoHSREACHCoC](#)
[ICP Report](#)

## Product detail

L(mm) ±	2.0±0.2
W(mm) ±	1.25±0.2
T(mm) ±	1.0Max.
Inductance(uH)	2.2
Tolerance(±%)	30
Test Frequency	3MHz,200mV
RDC(ohm)	0.19
RDC Tolerance(±%)	30
Isat(A)Max	0.4
Irms(A)Max.85°C*1	1.1
Irms(A)Max.125°C*1	0.8
Operating Temperature	-40°C~125°C



## Products

Power Inductor  
EMI-Common Mode Choke  
EMI-Bead  
RF-Signal Inductor  
RF-Passives/Antennas  
LAN Transformer  
Resistor & Current Sensor

## Applications

Automotive  
Industrial  
Server/DataCenter  
Communication  
Mobile and Tablet  
Computer/Laptop  
Consumer

## Design Tools

Simulation Tool  
Product Search Engine  
E-Catalogue

## About Us

Corporate Overview  
Corporate Milestones  
Core Technology  
Certificates & Awards  
Quality and Social Responsibility

## Investor

## News

Media Center

New Products

Events

Product Notices

## Contact Us

Contact Info

Contact Form

Join Chilisin

Terms of Use

Privacy policy

Sitemap



Inductor



Resistor



Powder

Copyrights © 2018. Chilisin. All rights reserved.