



Part Number : [50579414](#)

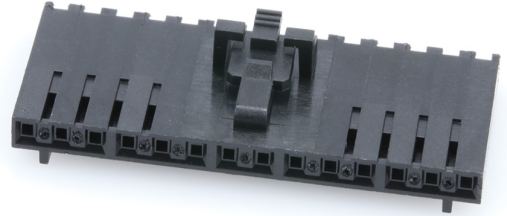
Product Description : SL Crimp Housing, Single Row, Version G, Positive Latch, 14 Circuits, Black

Series Number : 70066

Status : Active

Product Category : Connector Housings

Engineering Number : 70066-0188



---

## Documents & Resources

### Drawings

[Drawing 050579414\\_sd.pdf](#)

[Packaging Design Drawing PK-70066-100-001.pdf](#)

### 3D Models and Design Files

[3D Model 050579414\\_stp.zip](#)

### Specifications

[Product Specification PS-70058-001.pdf](#)

[Product Specification PS-70400-001.pdf](#)

[Product Specification PS-71851-001.pdf](#)

[Test Summary TS-70058-001-001.pdf](#)

---

## Product Environment Compliance

### Compliance

GADSL/IMDS	Not Relevant
China RoHS	
EU ELV	Not Relevant
Low-Halogen Status	Not Low-Halogen per IEC 61249-2-21
REACH SVHC	Not Contained per D(2024)4144-DC (27 June 2024)
EU RoHS	Compliant per EU 2015/863

### [Multiple Part Product Compliance Statements](#)

- Eu RoHS
- REACH SVHC
- Low-Halogen

#### Multiple Part Industry Compliance Documents

- IPC 1752A Class C
- IPC 1752A Class D
- Molex Product Compliance Declaration
- IEC-62474
- chemSHERPA (xml)

#### EU RoHS Certificate of Compliance

---

### Part Details

#### General

Status	Active
Category	Connector Housings
Series	70066
Description	SL Crimp Housing, Single Row, Version G, Positive Latch, 14 Circuits, Black
Application	Signal, Wire-to-Board
Comments	Version G
Product Family	SL Modular Connectors
Product Name	SL
UPC	800753577824

#### Agency

CSA	LR19980
UL	E29179

#### Physical

Circuits (maximum)	14
Color - Resin	Black
Flammability	94V-0
Gender	Receptacle
Glow-Wire Capable	No
Keying to Mating Part	Yes

Lock to Mating Part	Yes
Material - Resin	Polyester Alloy
Net Weight	1.120/g
Number of Rows	1
Packaging Type	Bag
Panel Mount	No
Pitch - Mating Interface	2.54mm
Stackable	No
Temperature Range - Operating	-40° to +105°C

### Solder Process Data

Lead-Free Process Capability	N/A
------------------------------	-----

---

### Mates With / Use With

#### Mates with Part(s)

Description	Part Number
SL Single Row Housing Panel Mounts	<u>70018</u>
SL Single Row Crimp Housings	<u>70107</u>
SL Vertical Single Row Headers	<u>70541</u>
SL Vertical Single Row Headers	<u>70543</u>
SL Vertical Single Row Headers	<u>70545</u>
SL Vertical, Single Row, Surface Mount Headers	<u>74099</u>
SL Right-Angle Single Row Headers	<u>70551</u>
SL Right-Angle, Single Row, Low Profile Headers	<u>70553</u>
SL Right-Angle Single Row Headers	<u>70555</u>
SL Right-Angle, Single Row, Low Profile, Surface Mount Headers	<u>70634</u>

#### Use with Part(s)

Description	Part Number
SL Female Terminals	<u>70058</u>

---

This document was generated on Sep 29, 2024