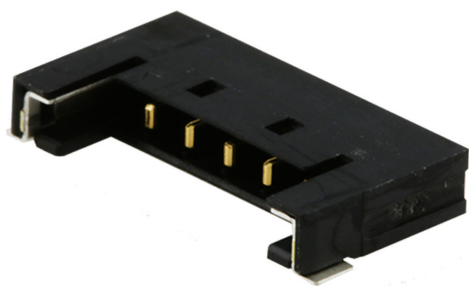




Part Number : [5040500291](#)
Product Description : 1.50mm Pitch, Pico-Lock PCB Header, Single Row, Right-Angle, Surface Mount, Gold (Au) Plating, Positive Lock, 2 Circuits, Tape and Reel
Series Number : 504050
Status : Active
Product Category : PCB Headers and Receptacles



Documents & Resources


Drawings
[5040500291_sd.pdf](#)

3D Models and Design Files
[5040500291.dxf](#)
[5040500291.pdf](#)
[5040500291_stp.zip](#)

Specifications
[AS-504051-001-001.pdf](#)
[SPK-504050-001-001.pdf](#)
[5040511001-PS-000.pdf](#)
[PS-504051-001-001.pdf](#)

Product Environment Compliance

Compliance

GADSL/IMDS	Compliant with Exemption 44; 33; 34
China RoHS	
EU ELV	Not Relevant
Low-Halogen Status	Low-Halogen per IEC 61249-2-21
REACH SVHC	Not Contained per D(2024)7663-DC (21 Jan 2025)
EU RoHS	Compliant per EU 2015/863

Multiple Part Product Compliance Statements
- Eu RoHS

- REACH SVHC

- Low-Halogen

Multiple Part Industry Compliance Documents

- IPC 1752A Class C

- IPC 1752A Class D

- Molex Product Compliance Declaration

- IEC-62474

- chemSHERPA (xml)

EU RoHS Certificate of Compliance

Part Details

General

Status	Active
Category	PCB Headers and Receptacles
Series	504050
Description	1.50mm Pitch, Pico-Lock PCB Header, Single Row, Right-Angle, Surface Mount, Gold (Au) Plating, Positive Lock, 2 Circuits, Tape and Reel
Application	Signal, Wire-to-Board
Comments	See Molex product specification PS-504051-001 for additional current de-rating information
Component Type	PCB Header
Product Name	Pico-Lock
UPC	191128805025

Agency

CSA	LR19980
UL	E29179

Electrical

Current - Maximum per Contact	3.5A
Voltage - Maximum	150V AC (RMS)/DC

Physical

Breakaway	No
-----------	----

Circuits (Loaded)	2
Circuits (maximum)	2
Color - Resin	Black
Durability (mating cycles max)	30
First Mate / Last Break	No
Flammability	94V-0
Glow-Wire Capable	No
Guide to Mating Part	No
Keying to Mating Part	N/A
Lock to Mating Part	Yes
Mated Height	2.00mm
Material - Metal	Copper Alloy
Material - Plating Mating	Gold
Material - Resin	High Temperature Thermoplastic
Net Weight	93.180/mg
Number of Rows	1
Orientation	Right Angle
Packaging Type	Embossed Tape on Reel
Pitch - Mating Interface	1.50mm
Pitch - Termination Interface	1.50mm
Plating min - Mating	0.100µm
Polarized to Mating Part	Yes
Shrouded	Yes
Stackable	No
Temperature Range - Operating	-40° to +105°C
Termination Interface Style	Surface Mount

Mates With / Use With

Mates with Part(s)

Description	Part Number
1.50mm Pitch, Pico-Lock Single Row Receptacle Housings	<u>504051</u>

This document was generated on Mar 17, 2025