



Pushing Performance
Since 1945

Han D 64 Pos. M Insert Term. Block Right

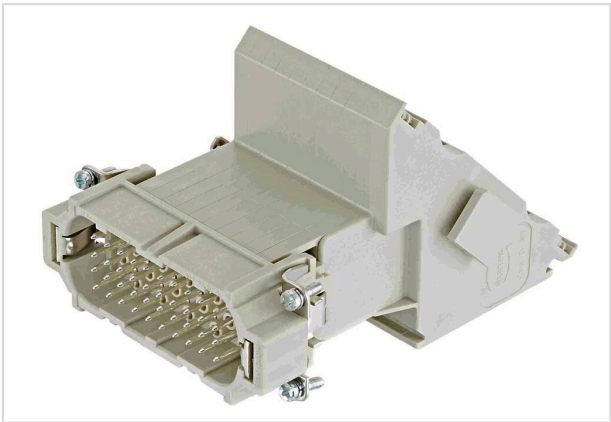


Image is for illustration purposes only. Please refer to product description.

| | |
|--------------------|---|
| Part number | 09 21 064 4611 |
| Specification | Han D 64 Pos. M Insert Term. Block Right |
| HARTING eCatalogue | https://harting.com/09210644611 |

Identification

| | |
|---------------|--|
| Category | Inserts |
| Series | Han D® AV |
| Element | Terminal block connector |
| Specification | Right hand version Multi contour (MK) |

Version

| | |
|--------------------|-------------------|
| Termination method | Screw termination |
| Gender | Male |
| Size | 24 B |
| Number of contacts | 64 |
| PE contact | Yes |

Technical characteristics

| | |
|--------------------------|---------------------|
| Conductor cross-section | 0.2 ... 2.5 mm² |
| Rated current | 10 A |
| Rated voltage | 250 V |
| Rated impulse voltage | 4 kV |
| Pollution degree | 3 |
| Rated voltage acc. to UL | 600 V |
| Insulation resistance | >10 ¹⁰ Ω |
| Contact resistance | ≤4 mΩ |



Pushing Performance
Since 1945

Technical characteristics

| | |
|--------------------------|-------------------------|
| Tightening torque | 0.5 Nm Contact screw M3 |
| | 0.5 Nm Fixing screws M3 |
| Recommended screw driver | Slotted 0.5 x 3 |
| | Slotted 0.6 x 3.5 |
| | PH2 |
| Limiting temperature | -40 ... +125 °C |
| Mating cycles | ≥500 |

Material properties

| | |
|---|--|
| Material (insert) | Polycarbonate (PC) |
| Colour (insert) | RAL 7032 (pebble grey) |
| Material (contacts) | Copper alloy |
| Surface (contacts) | Silver plated |
| Material flammability class acc. to UL 94 | V-0 |
| RoHS | compliant with exemption |
| RoHS exemptions | 6(c): Copper alloy containing up to 4 % lead by weight |
| ELV status | compliant with exemption |
| China RoHS | 50 |
| REACH Annex XVII substances | Not contained |
| REACH ANNEX XIV substances | Not contained |
| REACH SVHC substances | Yes |
| REACH SVHC substances | Lead |
| California Proposition 65 substances | Yes |
| California Proposition 65 substances | Lead |
| Fire protection on railway vehicles | EN 45545-2 (2020-08) |
| Requirement set with Hazard Levels | R22 (HL 1-3) |
| | R23 (HL 1-3) |

Specifications and approvals

| | |
|----------------|-----------------------|
| Specifications | IEC 60664-1 |
| | IEC 61984 |
| UL / CSA | UL 1977 ECBT2.E235076 |
| Approvals | DNV GL |

Commercial data

| | |
|----------------|---|
| Packaging size | 1 |
|----------------|---|



Pushing Performance
Since 1945

Commercial data

| | |
|--------------------------------|---|
| Net weight | 570 g |
| Country of origin | Romania |
| European customs tariff number | 85366990 |
| GTIN | 5713140040830 |
| eCl@ss | 27440205 Contact insert for industrial connectors |
| ETIM | EC000438 |
| UNSPSC 24.0 | 39121522 |