



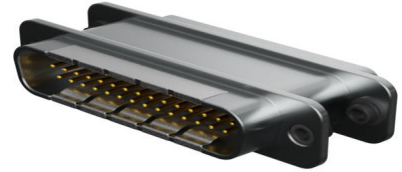
**Part Number :** [732830361](#)

**Product Description :** High-Density EMI Filtered D-Sub Adapter, Male-to-Female, Straight, 4000pF C, 44 Circuits

**Series Number :** 73283

**Status :** Active

**Product Category :** D-Sub Connectors



---

## Documents and Resources

### Drawings

[732830361 sd.pdf](#)

[STEP AP242](#)

[SOLIDWORKS](#)

[Creo](#)

---

## Product Environment Compliance

### Compliance

GADSL/IMDS	Not Relevant
China RoHS	Not Reviewed per SJ/T 11365-2006
EU ELV	Not Relevant
Low-Halogen Status	Not Reviewed per IEC 61249-2-21
REACH SVHC	Not Reviewed per D(2025)7771-DC (04 Feb 2026)
EU RoHS	Not Reviewed per EU 2015/863

### Compliance Statements

- EU RoHS
- REACH SVHC
- Low-Halogen

### Industry Documents

- IPC 1752A Class C
- IPC 1752A Class D
- Molex Product Compliance Declaration

- IEC-62474
- chemSHERPA (xml)

### Substances of Interest

- PFAS

### EU RoHS Certificate of Compliance

### Additional Product Compliance Information

---

## Part Details

### General

Status	Active
Category	D-Sub Connectors
Series	73283
Description	High-Density EMI Filtered D-Sub Adapter, Male-to-Female, Straight, 4000pF C, 44 Circuits
Application	RF
Component Type	Adapter
Product Name	EMI Filtered D-Sub
Type	High Density EMI Filtered
UPC	198282751014

### Electrical

Current - Maximum per Contact	3.0A
Capacitance Value	4000 pF
Capacitance Tolerance	± 25%
3 dB Cut-off Frequency Max. (MHz)	1.3
Dielectric Withstanding Voltage (V)	300
EMI Filter Circuits	Capacitive
Minimum Insertion Loss (dB) - 1 GHz	48
Minimum Insertion Loss (dB) - 10 MHz	13
Minimum Insertion Loss (dB) - 100 MHz	31
Minimum Insertion Loss (dB) - 20	19

MHz	
Minimum Insertion Loss (dB) - 200 MHz	37
Minimum Insertion Loss (dB) - 5 MHz	8
Minimum Insertion Loss (dB) - 50 MHz	26
Minimum Insertion Loss (dB) - 500 MHz	45
Voltage - Maximum	100V DC

## Physical

Circuits (Loaded)	44
Circuits (maximum)	44
Color - Resin	Black
Durability (mating cycles max)	500
Gender	Male/Female
Material - Contact	Copper Alloy
Material - Plating Mating	Gold
Material - Plating Termination	Gold
Material - Resin	Polyester
Material - Shell	Zinc
Number of Rows	3
Orientation	Straight
Packaging Type	Tray
Panel Mount	Rear
Panel Mount Method	Hardware
PCB Locator	No
PCB Retention	No
PC Tail Length	N/A
Pitch - Mating Interface	2.29mm
Pitch - Termination Interface	2.29mm
Plating min - Mating	1.270µm
Plating min - Termination	Flash
Plating - Shell	Nickel
Polarized to Mating Part	Yes

Polarized to PCB	Yes
Ports	1
Temperature Range - Operating	-55° to +125°C
Termination Style	N/A
Waterproof / Dustproof	No
Wire Size (AWG)	N/A

---

This document was generated on Apr 26, 2026