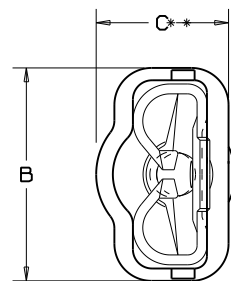
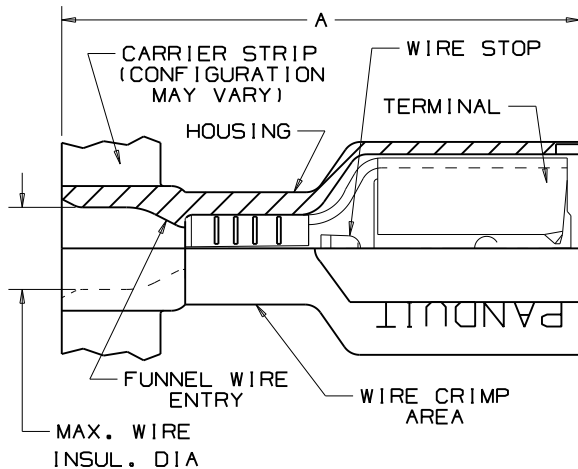


THIS COPY IS PROVIDED ON A RESTRICTED BASIS AND IS NOT TO BE USED IN ANY WAY DETRIMENTAL TO THE INTERESTS OF PANDUIT CORP.



NOTES:

1. UL LISTED AND CSA CERTIFIED FOR:
  - A. 600V MAX. VOLTAGE RATING.
  - B. 221°F (105°C) MAX. TEMP. RATING (CSA).
  - C. 257°F (125°C) MAX. TEMP. RATING (UL).
  - D. STRANDED COPPER WIRE ONLY.
2. DNF10-250FIB-2K IS RATED FOR 257°F (125°C) BY UL & CSA
3. PACKAGE QTY: 3K:3000 PIECES, 2K:2000 PIECES  
CONTINUOUS MOLDED STRIP CARRIER
4. MATERIAL:
  - A. STAMPING-CDA 260 BRASS, TIN PLATED
  - B. HOUSING-TYPE 66 NYLON
5. DIMENSIONS IN BRACKETS ARE IN mm OR mm<sup>2</sup>
6. COLORS ARE TRANSLUCENT
- \* 7. NOTCHES DO NOT APPEAR ON PART# DNF18-250FIB-3K
8. DNF10-250FIB-2K IS UL APPROVED FOR USE WITH THE FOLLOWING WIRE COMBINATIONS: (2) #14, (2) #16, (2) #18  
TWIST WIRES TOGETHER BEFORE CRIMPING
- \*\*\* 9. DNF10250FIBC-2K HAS HIGH WITHDRAWAL AND INSERTION CHARACTERISTICS (NOT UL/CSA)



LISTED 20H3 E78522  
CERTIFIED LR31212

TOOL CHART  
RECOMMENDED PRESS:  
CP-871

PART NUMBER	TAB SIZE	WIRE RANGE AWG (mm <sup>2</sup> )	COLOR (note 6)	MAX. INSUL.	DIMENSIONS in.			STRIP LENGTH (+1/32 (0.8) -0)	TOOL CHART RECOMMENDED PRESS: CP-871
					A ±.03 (.8)	B ±.02 (.5)	C ±.02 (.5)		
** DNF18-250FIB-3K	.250 X .032 (6,3 X 0,8)	22-18 (1,5-1,0)	RED	.136 (3,45)	.84 (21,3)	.35 (8,9)	.22 (5,6)	9/32 (7,1)	CA-800EZ / CA9 CA-800 APPLICATOR DIES
DNF18-205FIB-3K	.205/.187 X .032 (5,2/4,8 X 0,8)	22-18 (1,5-1,0)	RED	.136 (3,45)	.78 (19,8)	.31 (7,9)	.22 (5,6)	"	CD-800-4 CD9-4A
DNF18-206FIB-3K	.205/.187 X .020 (5,2/4,8 X 0,5)	22-18 (1,5-1,0)	RED	.136 (3,45)	.78 (19,8)	.31 (7,9)	.22 (5,6)	"	
DNF18-187FIB-3K	.187 X .032 (4,8 X 0,8)	22-18 (1,5-1,0)	RED	.136 (3,45)	.78 (19,8)	.29 (7,4)	.16 (4,1)	"	
DNF18-188FIB-3K	.187 X .020 (4,8 X 0,5)	22-18 (1,5-1,0)	RED	.136 (3,45)	.78 (19,8)	.29 (7,4)	.16 (4,1)	"	
DNF14-250FIB-3K	.250 X .032 (6,3 X 0,8)	16-14 (1,5-2,5)	BLUE	.160 (4,06)	.84 (21,3)	.35 (8,9)	.22 (5,6)	"	CD-800-5 CD9-5A
DNF14-205FIB-3K	.205/.187 X .032 (5,2/4,8 X 0,8)	16-14 (1,5-2,5)	BLUE	.160 (4,06)	.78 (19,8)	.31 (7,9)	.22 (5,6)	"	
DNF14-206FIB-3K	.205/.187 X .020 (5,2/4,8 X 0,5)	16-14 (1,5-2,5)	BLUE	.160 (4,06)	.78 (19,8)	.31 (7,9)	.22 (5,6)	"	
DNF14-187FIB-3K	.187 X .032 (4,8 X 0,8)	16-14 (1,5-2,5)	BLUE	.160 (4,06)	.78 (19,8)	.29 (7,4)	.18 (4,6)	"	
DNF14-188FIB-3K	.187 X .020 (4,8 X 0,5)	16-14 (1,5-2,5)	BLUE	.160 (4,06)	.78 (19,8)	.29 (7,4)	.18 (4,6)	"	CD-800-13 CD9-13B
DNF10-250FIB-2K	.250 X .032 (6,3 X 0,8)	12-10 (4,0-6,0)	YELLOW	.220 (5,59)	.96 (24,4)	.35 (8,9)	.23 (5,8)	3/8 (9,5)	
*** DNF10-250FIBC-2K	.250 X .032 (6,3 X 0,8)	12-10 (4,0-6,0)	YELLOW	.220 (5,59)	.96 (24,4)	.35 (8,9)	.23 (5,8)	3/8 (9,5)	

13	07.12	BDK	LSM	ADDED DNF10-250FIBC-2K TO CHART AND NOTE #9 REVISED TOOL CHART	N41165BA-DC	VMB	
12	02/09	BCT		ADDED NOTE TO TWIST MULTIPLE WIRES TOGETHER PRIOR TO CRIMPING			
11	08/07	SRB		Removed notches from housing DNF18-250FIB-3K			
10	11/04	KLFU		UPDATED TOOL CHART PART NUMBERS			
REV	DATE	BY	CHK	DESCRIPTION	ECN #	CUST	PM



CORP.

TINLEY PARK, ILLINOIS

REELSMART™

DISCO-FULLY INSULATED FEMALE DISCONNECTS  
.250 X .032, .205 X .032/.020, .187 X .032/.020

DRAWN BY DSM	CHK'D	SCALE NONE	DRAWING NO. N41165BA-DC
-----------------	-------	---------------	----------------------------