



**Part Number :** [1731071233](#)

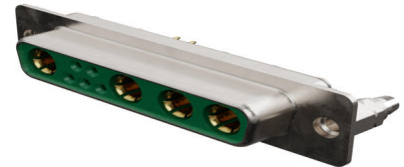
**Product Description :** FCT Mixed Layout D-Sub Connector, Female, Straight, Through Hole, Gold Plating, Tin-plated Shell, 7.00mm Snap-in Bolt, 9 Circuits Loaded (4 High Power, 5 Signal), Green Insulator

**Series Number :** 173107

**Status :** Active

**Product Category :** D-Sub Connectors

**Engineering Part Number :** FM9W4S1-2239



---

## Documents and Resources

### Drawings

[1731071233 sd.pdf](#)

[STEP AP242](#)

[SOLIDWORKS](#)


[Creo](#)

[Symbol and Footprint \(Multi-Format\)](#)

---

## Product Environment Compliance

### Compliance

GADSL/IMDS	Not Relevant
China RoHS	 per SJ/T 11365-2006
EU ELV	Not Relevant
Low-Halogen Status	Not Reviewed per IEC 61249-2-21
REACH SVHC	Contains Lead per D(2025)7771-DC (04 Feb 2026)
EU RoHS	Compliant with Exemption 6(c) per EU 2015/863

### Compliance Statements

- EU RoHS
- REACH SVHC

- Low-Halogen

#### Industry Documents

- IPC 1752A Class C
- IPC 1752A Class D
- Molex Product Compliance Declaration
- IEC-62474
- chemSHERPA (xml)

#### Substances of Interest

- PFAS

#### EU RoHS Certificate of Compliance

#### Additional Product Compliance Information

---

## Part Details

### General

Status	Active
Category	D-Sub Connectors
Series	173107
Description	FCT Mixed Layout D-Sub Connector, Female, Straight, Through Hole, Gold Plating, Tin-plated Shell, 7.00mm Snap-in Bolt, 9 Circuits Loaded (4 High Power, 5 Signal), Green Insulator
IP Rating	IP20
Magnetic	Yes
Product Name	FCT Products
Type	Mixed Layout
UPC	191130107094

### Electrical

Current - Maximum per Contact	7.5A, 20.0A
Shielded	Yes

### Physical

Circuits (Loaded)	9
Circuits (maximum)	9
Color - Resin	Green

Durability (mating cycles min)	500
Gender	Female
Material - Contact	Copper Alloy
Material - Resin	Polybutylene Terephthalate (PBT)
Material - Shell	Steel
Net Weight	16.400/g
Number of Rows	2
Orientation	Straight
Packaging Type	Carton
Panel Mount	Rear
Panel Mount Method	Thread-In
PCB Locator	Yes
PCB Retention	Yes
PC Tail Length	10.30mm
Pitch - Mating Interface	2.84mm
Pitch - Termination Interface	2.84mm
Plating - Contact	Gold over Nickel   Gold/Tin over Nickel
Plating min - Mating	0.800µm
Plating min - Termination	0.800µm, 5.000µm
Plating - Shell	Tin
Polarized to Mating Part	Yes
Polarized to PCB	Yes
Ports	1
Shell Size	3
Temperature Range - Operating	-55° to +130°C
Termination Style	Through Hole
Waterproof / Dustproof	No
Waterproof / Dustproof Type	IP20

---

## Mates With / Use With

### Mates with Part(s)

Description	Part Number
Mates With	FCT Mixed Layout D-Sub, Size 3,

	9W4, Plug
--	-----------

---

This document was generated on May 26, 2026