



Pushing Performance
Since 1945

Han D 15 Pos. F Insert Crimp

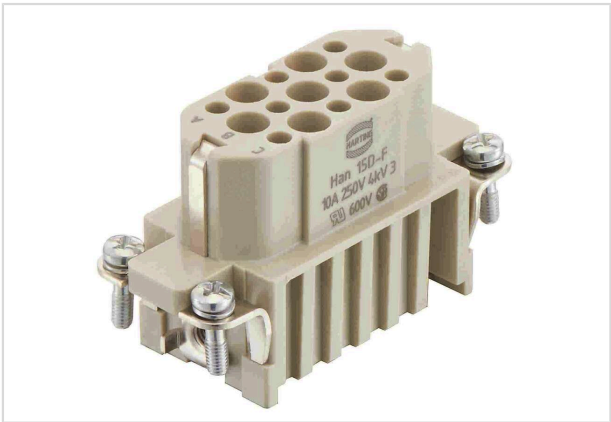


Image is for illustration purposes only. Please refer to product description.

Part number	09 21 015 3101
Specification	Han D 15 Pos. F Insert Crimp
HARTING eCatalogue	https://harting.com/09210153101

Identification

Category	Inserts
Series	Han D®

Version

Termination method	Crimp termination
Gender	Female
Size	10 A
Number of contacts	15
PE contact	Yes
Details	Please order crimp contacts separately.

Technical characteristics

Conductor cross-section	0.14 ... 2.5 mm²
Rated current	10 A
Rated voltage	250 V
Rated impulse voltage	4 kV
Pollution degree	3
Rated voltage acc. to UL	600 V
Rated voltage acc. to CSA	600 V
Insulation resistance	>10 ¹⁰ Ω
Tightening torque	0.8 Nm PE screw M3.5
Recommended screw driver	Slotted 0.6 x 3.5 PH1



Pushing Performance
Since 1945

Technical characteristics

Limiting temperature	-40 ... +125 °C
Mating cycles	≥500

Material properties

Material (insert)	Polycarbonate (PC)
Colour (insert)	RAL 7032 (pebble grey)
Material flammability class acc. to UL 94	V-0
RoHS	compliant
ELV status	compliant
China RoHS	e
REACH Annex XVII substances	Not contained
REACH ANNEX XIV substances	Not contained
REACH SVHC substances	Not contained
California Proposition 65 substances	Yes
California Proposition 65 substances	Nickel
Fire protection on railway vehicles	EN 45545-2 (2020-08)
Requirement set with Hazard Levels	R22 (HL 1-3) R23 (HL 1-3)

Specifications and approvals

Specifications	IEC 60664-1 IEC 61984 EN 175301-801
UL / CSA	UL 1977 ECBT2.E235076 CSA-C22.2 No. 182.3 ECBT8.E235076
Approvals	DNV GL

Commercial data

Packaging size	1
Net weight	24 g
Country of origin	Romania
European customs tariff number	85366990
GTIN	5713140040502
eCl@ss	27440205 Contact insert for industrial connectors
ETIM	EC000438



Pushing Performance
Since 1945

Commercial data

UNSPSC 24.0

39121522
