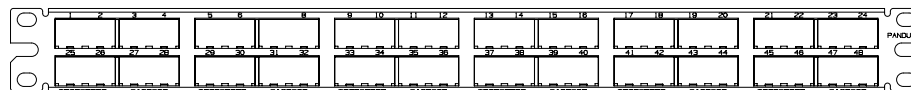
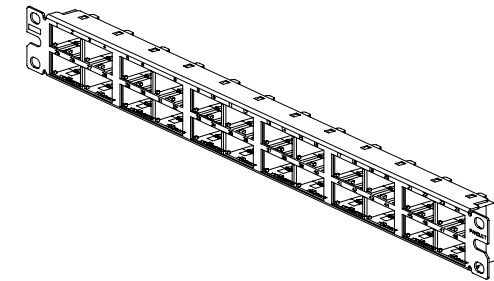
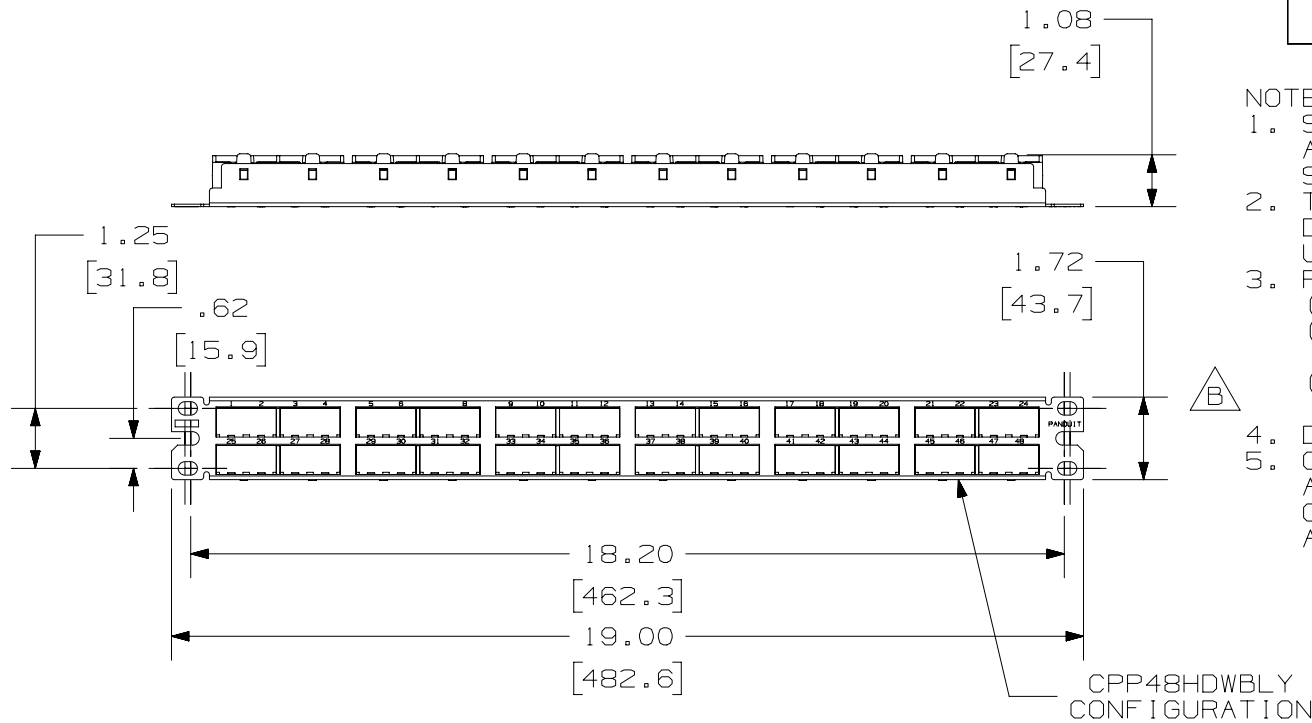


THIS COPY IS PROVIDED ON A RESTRICTED BASIS AND IS NOT TO BE USED IN ANY WAY DETRIMENTAL TO THE INTERESTS OF PANDUIT CORP.

PANDUIT P/N	WEIGHT
CPP48HDWBL CPP48HDWWH	6.15 LB/10 PCS (2788.0 g/10 PCS)

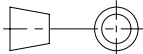
NOTES:

- SEE CURRENT CATALOG FOR VARIOUS APPLICATIONS WITH THIS WIRING SYSTEM.
- THE HIGH DENSITY PATCH PANEL IS DESIGNED FOR MOUNTING TO 19" UNIVERSAL RACKS.
- PACKAGE CONTENTS:
 - 48 PORT STAMPING
 - 8 POSITION FACEPLATE (ASSEMBLED TO PANEL)
 - SCREW KIT (INCLUDES FOUR #12-24 SCREWS)
- DIMENSIONS IN [] ARE IN METRIC.
- CPP48HDWBL FABRICATED COMPONENTS ARE BLACK.
CPP48HDWWH FABRICATED COMPONENTS ARE WHITE.



CPP48HDWWH CONFIGURATION
NOTE: NO RECTANGULAR BOXES

3	11/8/18	BAME	KRKE	MMR	B. REMOVED METRIC SCREWS	02479-081
2	10/4/17	BAME	KRKE	MMR	ADDED P/N CPP48HDWWH	02479-081
1	6/13/14	JSP	REFR	MMR	A. REVISED DRAWING TITLE BLOCK.	02479-081
R	3-11-06	JSP	MJD	MJD	RELEASED TO PRODUCTION	02479-081
REV	DATE	BY	CHK	APR	DESCRIPTION	ECN

PART NUMBER		CPP48HDWBL Y / CPP48HDWWH	
TITLE		MINI-COM 48 PORT HIGH DENSITY MODULAR PATCH PANEL	
		CUSTOMER DRAWING	
ITEM REVISION NAME		M02479DA/01	PANDUIT
DATASET FILE NAME		M02479DA_DC81/01A	
UNLESS OTHERWISE SPECIFIED, DIMENSIONAL TOLERANCES ARE: IN [mm]		MATERIAL:	
.X ± .03 [.8] .XXX ± .010 [.3] ANGLES ±		STAMPING: 18 GAGE C.R.S. FACEPLATE: ABS	
		DRAWING NUMBER:	
THIRD ANGLE PROJECTION		02479-081	
DRAWN BY	DATE	CHK	SCALE
JSP	3-11-06	MJD	NONE
SHT 1 OF 1		SIZE A	